

The background features a white space with several colorful circles and dashed lines. In the top left, there is a large teal circle with a white center, a smaller teal circle, and a dashed teal circle. In the top right, there is a large lime green circle, a smaller green circle, and a dashed green circle. In the bottom left, there is a large green circle with a white center, a smaller orange circle, and a dashed yellow circle. In the bottom right, there is a large yellow circle, a smaller orange circle, and a small pink circle. A dashed grey line forms a large, irregular shape that frames the central text.

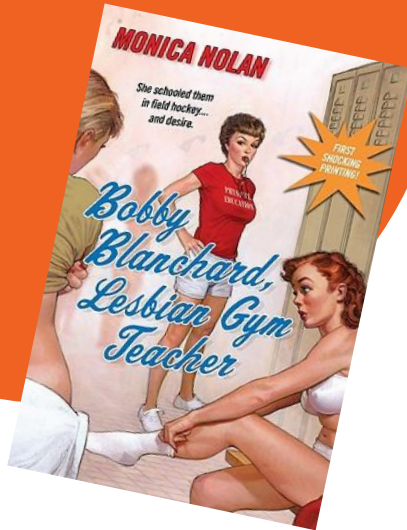
# Queer Men, Affect, & Physical Education

*Dillon Landi  
Ph.D. Candidate  
The University of Auckland  
(New Zealand)*



- PE has reproduced traditional forms of gendered practices that align to heteronormativity (Brown, 2005; Gard, 2001; Hunter, 2005; Penney, 2002; Sykes, 2011; Wright, 1997).
- Many scholars (e.g. Clarke, 1998; 2000; Gill et al., 2006; McGlashan, 2013; Morrow & Gill, 2003; Sykes, 2011) have found PE to be engrained with heterosexist and homophobic discourses.

# Gaps



- ◎ Clarke (2006) claims the lack of research on queer male experiences is “a sad indictment of much of the physical education profession and wider western society” (p. 730).
- ◎ Very little discussion of homoerotic desire in physical education settings (Sykes, 2003)
- ◎ Binaries:
  - ◎ Bodies (natural/ social)
  - ◎ Identities (essentialist/ constructivist)

A decorative graphic on the left side of the slide. It features a large orange circle in the center. Surrounding it are several smaller circles: a teal circle at the top left, a pink circle at the top, a yellow circle with a dashed border and a white center at the top right, a lime green circle at the bottom left, and a small green circle with a white center at the bottom. A dashed white line is also visible in the top left corner.

# Purpose

- © Draw on new materialist theory to analyse how queer bodies and desire is augmented and/ or limited through physical education.

# New Materialism: Deleuze & Guattari

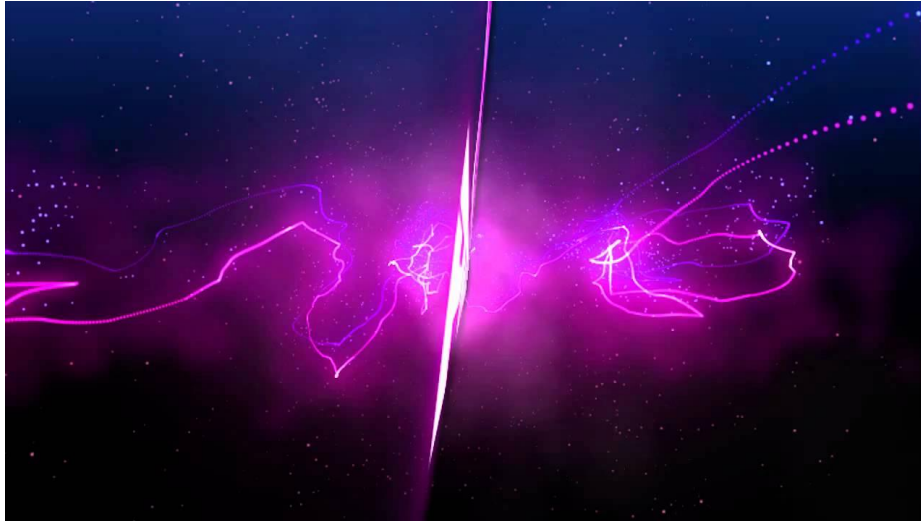


# Assemblage

- An ensemble of parts (material or non-material) that come together to produce a whole.
- The assemblage is a “chaotic network of habitual and non-habitual connections, always in flux, always reassembling in different ways” (Potts, 2004: 19).
- Body is an assemblage: different parts that come together to produce a whole, always re-assembling, and is made of material and non-material bodies.
- Desire is produced through these relations.



# Affect



**Do not ask: What is a thing?  
Ask: What can it do?**

# Methods as Assemblage

- **Critical Ethnography (Thomas, 1993)**
  - **Setting: QueerTEENS (Auckland, NZ)**
  - **Participants: 11 Queer Men.**
  - **Data Generation:**
    - **5 Group Interviews (avg. 38 minutes)**
    - **6 Individual Interviews (avg. 40 minutes)**
  - **Data Analysis:**
    - **Dredging (Fox & Alldred, 2017)**
    - **Mapping (Ringrose & Coleman, 2013)**
    - **Crystallization (Ellingson, 2009).**





A decorative graphic featuring a large, light blue dashed circle that frames the central text. Various colorful circles and arcs are scattered around the page, including a large lime green circle at the top left, a teal circle with a white quote mark at the top center, a yellow circle at the top right, an orange circle at the bottom left, and a yellow circle at the bottom right. There are also several smaller circles in shades of green, blue, orange, and pink.

“

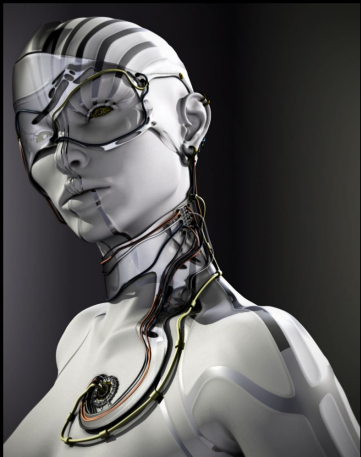
# Key Findings

Assembling  
Sexy & Athletic  
Bodies



“

*Ethnicities—Femininities—Breasts—  
Capitalism—Heterosexuality—  
Masculinities—Muscles*



Assembling  
Queer Desire





*Men's Bodies— Viewing—  
Rules— Hot Men —  
Pants— Body Parts—  
Excitement*



Queer Desire  
as  
Transformative





*Masculinities—  
Femininities— Makeup—  
Capitalism—  
Confidence— Pleasure—  
Challenge*

# Discussion

- Natural/ Social Binary
- Desire as produced in PE
- Queer Potential to Transform PE

