

Hospital usage of TOXBASE in Great Britain: Temporal trends in accesses 2008 to 2015

Kate Pyper¹, Michael Eddleston^{2, 3}, D Nicholas Bateman³, David Lupton³, Sally Bradberry⁴, Euan Sandilands³, Simon H. L. Thomas⁵, John P. Thompson⁶, Chris Robertson^{1,7}

¹ Department of Mathematics and Statistics, University of Strathclyde, Glasgow, UK

² Pharmacology, Toxicology & Therapeutics, University/BHF Centre for Cardiovascular Research, University of Edinburgh, Edinburgh, UK

³ National Poisons Information Service (Edinburgh Unit), Royal Infirmary of Edinburgh, Edinburgh, UK

⁴ National Poisons Information Service (Birmingham Unit), City Hospital, Birmingham, UK

⁵ National Poisons Information Service (Newcastle Unit), Wolfson Unit, Newcastle upon Tyne Hospitals NHS Foundation Trust, Newcastle upon Tyne, UK

⁶ National Poisons Information Service (Cardiff Unit), University Hospital Llandough, Penarth, Vale of Glamorgan, UK

⁷ Health Protection Scotland, Glasgow, UK

Corresponding Author:

Kate Pyper

Department of Mathematics and Statistics, University of Strathclyde

Livingstone Tower

26 Richmond Street

Glasgow G1 1XH

Tel: 0141 548 3619

Email: kate.pyper@strath.ac.uk

Hospital usage of TOXBASE in Great Britain: Temporal trends in accesses 2008 to 2015

Aim: This study examines temporal trends in accesses to the UK's National Poison Information Service's TOXBASE clinical management database since 2008 in Great Britain.

Methods: The unique accesses to TOXBASE from British emergency departments between January 2008 and December 2015 were identified and recorded as the total number of access per day. Generalised additive models were used to examine patterns related to day of the week, seasonality and long term trends. Analyses were carried out at a national and regional level (Wales, Scotland and the 9 English Government Office Regions).

Results: The long term trend in the number of daily accesses is an increase from an estimated 2.8 (95% CI: 2.6, 3.0) accesses per user on 1st January 2008 to 4.6 (95% CI: 4.3, 4.9) on 31st December 2015. There were small but significant differences in accesses by region in terms of absolute rate per population ($P < 0.001$). Usage increased in all regions from 2008 until 2013-15 whereupon it levelled off in all regions except Scotland, West Midlands, Wales and East of England where a continued rise was observed.

There is evidence of a significant seasonal pattern ($P < 0.001$), with consistent peaks in activity in February, July and October across regions of Great Britain. Relative to the quietest period of December accesses in the busiest period in mid-summer are 18 % (95% CI: 14%, 22%) higher. Accesses are higher at the weekend compared to weekdays in all regions. On average, there is a 7.5% (95% CI: 6.1%, 8.9%) increase between the quietest and busiest days (Friday and Sunday respectively)

Conclusions: This work has indicated that there are consistent in-year patterns in access to TOXBASE indicating potential seasonal patterns in incidences of poisoning in Great Britain. Usage of TOXBASE also varies in different parts of Britain. This novel descriptive work lays the basis for future work on the interaction of TOXBASE use with admission of patients into hospital from emergency departments.

Keywords: word; another word; lower case except names

Subject classification codes: include these here if the journal requires them

Introduction

Toxic exposure is a major contributor to the healthcare workload, with actual or suspected poisoning accounting for approximately 170,000 hospital admissions per year in the UK [1]. In addition, patients with suspected poisoning call NHS telephone helplines (NHS24 and NHS Direct), present to primary care, and present to emergency departments without being admitted [1]. The number of poisoned patients who do not get admitted is likely more than those admitted to hospital although national records in Britain only exist for patients admitted to hospital.

The UK's National Poisons Information Service (NPIS) provides UK clinicians with up-to-date information on the diagnosis, management and treatment of suspected poisoning [1]. This information is provided, in the first instance via an online clinical management database, TOXBASE. If further guidance is required, clinicians can telephone NPIS directly and get advice from a specialist in poisons information. Where the case is particularly complicated, or clinical advice is requested, the call is referred to an NPIS consultant clinical toxicologist.

TOXBASE contains advice on approximately 17,200 different chemicals and toxins, with relevant additions being made as the NPIS become aware of new substances [2]. The database is continually updated, with 4,100 entries being updated in the 2014/15 financial year [1]. It is free to use for all NHS health professionals.

The National Institute of Clinical Excellence (NICE) has indicated that, for cases of poisoning, the advice contained in TOXBASE should be considered the standard of care [3]. TOXBASE is typically accessed for all patients presenting to hospitals across the Britain. Therefore, the accesses made to TOXBASE should provide some indirect information on patterns of poisoning across the Britain.

Information on each access to TOXBASE is recorded and stored, resulting in a database containing data on the user, the product involved in the access, and the date and time that the access was made. Hospitals are the most active users of the TOXBASE system. In 2014/15 65% of all user sessions were from hospital departments, with 85% of these coming from emergency departments [1]. It is for this reason that this article focuses on the temporal patterns underlying the use of the TOXBASE database by British emergency departments.

The aim of this paper is to investigate the temporal and seasonal trends in accesses to TOXBASE by hospital emergency departments in Great Britain. This will give an overview of how poisoning and the approach to management have changed across the Britain since 2008. Initially this will focus on the trends in accesses from all emergency departments combined and will then examine any differences in the trends between regions of Great Britain. The variation in use throughout the year will be examined and day to day variation will also be assessed, which will determine whether there are any temporally cyclical patterns present in access to TOXBASE. There will also be some examination of whether there are differences in usage pattern depending on regional location.

Methods

Data sources

The data used in this analysis were taken from the TOXBASE access database, which contains routinely collected data. As pages are accessed in TOXBASE, a record is made of the specific page ID involved, the location specific user ID, and the date and time that the access was made. This information can be linked with lists of pages contained in the TOXBASE database and the list of registered TOXBASE users. This linkage

means that a wide variety of analyses can be carried out.

These collected data cannot be linked back to specific patients, and as such are completely non-identifiable. This linkage was used to extract data on TOXBASE usage by emergency departments in England, Scotland and Wales, which is a pool of 398 user IDs. These data were examined at a daily level between 1st January 2008 and 31st December 2015.

Statistical methods

The models used in this paper are of the class Generalised Additive Models (GAMs) [4]. These models were implemented in the R statistical software program [5] using the ‘mgcv’ package [4]. In addition to linear terms, these models have the capacity to fit flexible curves to suit the data pattern. The smoothness of these flexible terms was determined using generalised cross validation.

Models were fit at two different levels; overall Great Britain and regional. Each of these models examined temporal effects with covariates to examine the long-term trend, the seasonal trend and also a day-of-the-week effect. Each “day” was considered to run from midnight to midnight, which means that, for example, accesses which occur on a Sunday may be in relation to something which happened on Saturday night. The regional models considered an additional covariate for region, where the regions considered were Scotland, Wales and the English Government Office Regions: East Midlands, East of England, London, North East, North West, South East, South West, West Midlands and Yorkshire and the Humber.

The model examining the overall British trends took the form described by equation 1.

$$E(\log(y(t))) = \beta_1 + \beta_{day(t)} + f(d(t)) + g(t) \quad (1)$$

Here β_1 represents an average number of accesses, in this case it is the average number of accesses made on a Monday. The subscript $day(t)$ represents a specific day of the week so that $\beta_{day(t)}$ represents a deviation from the β_1 value meaning that $\beta_1 + \beta_{day(t)}$ for a given day represents the average number of accesses for a particular day of the week. The term $d(t)$ represents the day within a year while t is a time indicator. This means that the terms $f(d(t))$ and $g(t)$ represent the seasonal and long term trends respectively, which are represented as smooth functions. The log link is used here as the data are counts, which are positive. Taking the logarithm ensures that the values predicted from the model are positive.

In order to examine regional variation in accesses to TOXBASE, several models were fitted which reflect various ways in which location could impact the way in which TOXBASE accesses are made.

The simplest model would indicate that all regions are the same, and includes no regional effect, as shown in equation 1. The next level of complexity comes from region being considered as an additive term, which would indicate that, while the temporal trends estimated are the same for each region, each region has a different overall average usage. The more complex models use an interaction between region and each of the temporal terms, which would indicate that a particular trend (or set of trends) differs by region. The most complex of these models has the form described in equation 2, which indicates that the overall number of accesses, the weekly trend, the seasonal trend and the long-term trend are all different for each region.

$$E(\log(y_l(t))) = \beta_0 + \beta_{day(t)} + \gamma_l + \beta_{day(t)}\gamma_l + f_l(d(t)) + g_l(t) \quad (2)$$

The estimates from the regional level models will take the form of rates of access per 1,000 people in the population as determined by the 2015 mid-year population estimates [6], in order that the observed differences in numbers of accesses are not due to population size. Autocorrelation was accounted for by incorporating regional random effects, or adding an auto-regressive moving average (ARMA) autocorrelation structure into the models.

The smooth terms and parameters in these models are estimated via an iterative back fitting process, where each term is estimated based on the response values minus the current estimates of each other term in the model. Therefore at each step in the process the values being used to estimate are overall centred around zero, but still with some pattern that is to be estimated, herein referred to as the centred response. It is the final values of this iterative process that will be presented and interpreted as the trends in the model.

Due to the nature of these models, the predictions are on the log scale. The results are then presented as percentage increases or decreases. These are calculated by finding the difference between two predictions, along with the corresponding confidence interval and then transforming to the data scale by taking the exponent of the resulting interval. This is valid, since the exponential function is one-to-one and hence adheres to the invariance principle.

First derivatives were computed using finite differences, with confidence intervals for these being constructed as seen in the paper by Curtis and Simpson [7] (see also [8]). Since the first derivative of a function represents the gradient, this was used to identify periods of no change, which includes any peaks and troughs in the estimated

trends, by seeking out periods for which zero was within the confidence interval for the derivative.

Results

Overall

Figure 1 shows the number of accesses per registered user for each day between 1st January 2008 and 31st December 2015. From this plot it can be seen that the number of accesses made to TOXBASE has been increasing overall since 2008, although the increase seems to become less dramatic in the more recent years. From this, it is difficult, however, to pick out any strong seasonal variation or day-of-the-week effect, although a consistently low level of accesses is recorded on Christmas Day each year.

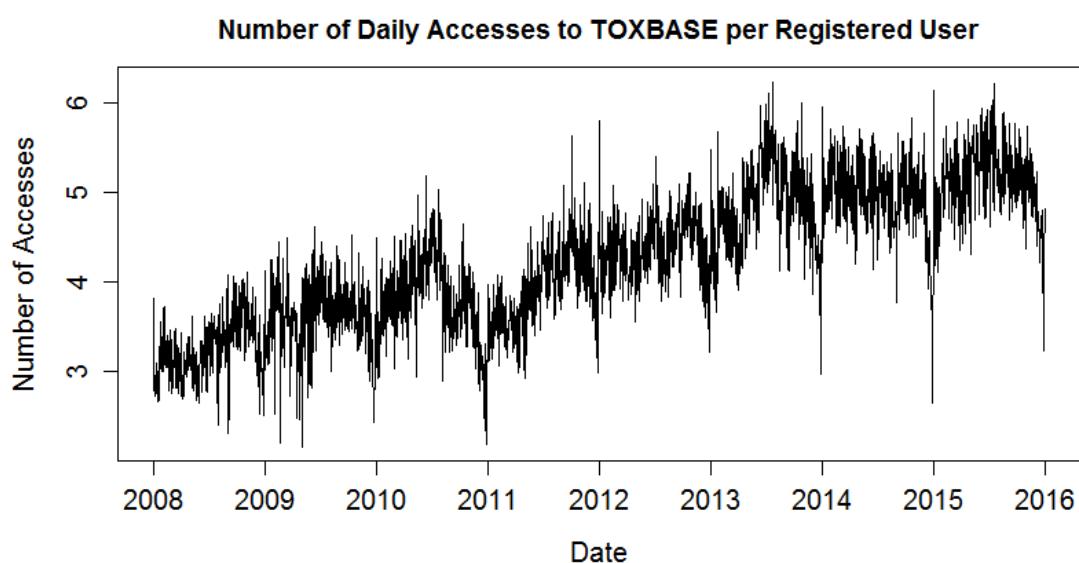


Figure 1. Daily number of accesses per registered user to TOXBASE between January 2008 and December 2015. Note the y-axis does not start at zero.

Figure 2 presents the average seasonal and long-term trends in the data. The long-term trend indicates that the daily rate of access per user has increased by 66.7% (95% CI:

56.1%, 78.0%) over the 8-year period between 2008 and 2015. The first derivative, which describes the rate of change of a function, indicates that the trend in the number of accesses made to TOXBASE has been approximately level since October 2013, where zero first appears in the 95% confidence interval for the first derivative.

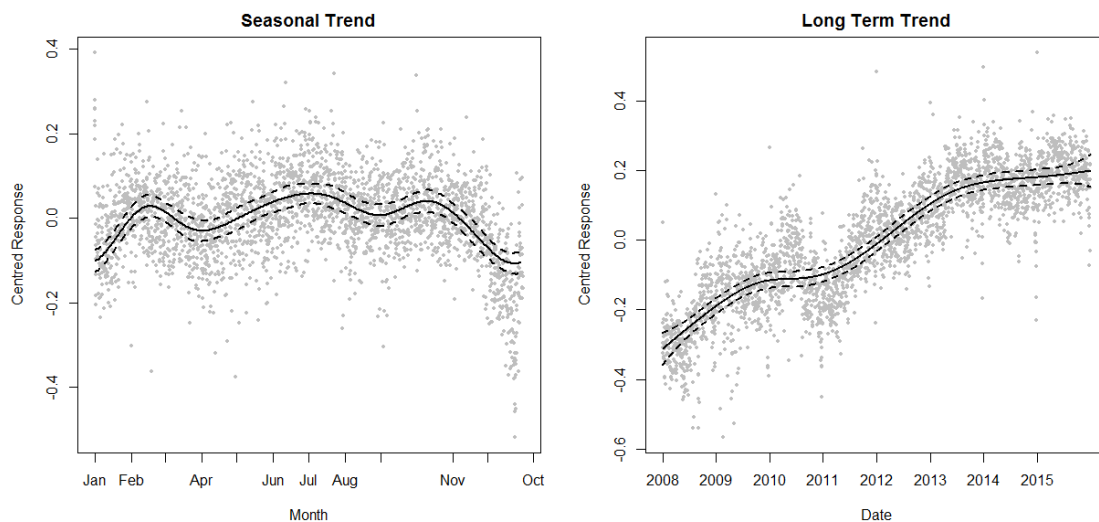


Figure 2. Seasonal (left) and long term (right) trends in access to the TOXBASE database, as estimated from a generalised additive model (dashed lines represent a 95% confidence interval). The y-axis denotes the response values minus the current estimates of each other term in the model.

The estimated seasonal trend indicates that there are three separate peaks in accesses to TOXBASE. Accesses are initially low in January compared to the rest of the year, before increasing by 13.8% (95% CI: 9.7%, 18.2%) to the first peak sometime between the 13th and 23rd February. There is a subsequent 6% (95% CI: 2.2%, 9.9%) reduction to a minimum in late March or early April before increasing by 9.2% (95% CI: 5.5%, 12.9%) to the second peak between 11th June and 18th July. Accesses then decreased by 5.3% (95% CI: 1.6%, 9.0%) to mid-August. There is an incremental increase between the minimum in August and the October peak of 3.4% (95% CI: -0.4%, 7.4%) which is not statistically significant. Accesses then decrease by around 15.9% (95% CI: 11.7%, 20.2%) between the October peak and the minimum that occurs over the Christmas

period, between the 17th and 27th December.

The peak which is evident in summer is also apparent in the number of accesses to pages related to agrochemicals and drugs of abuse (Figure 3). Interestingly, the number of accesses to pages on antidepressants shows a similar seasonal pattern, although with a more pronounced peak in February.

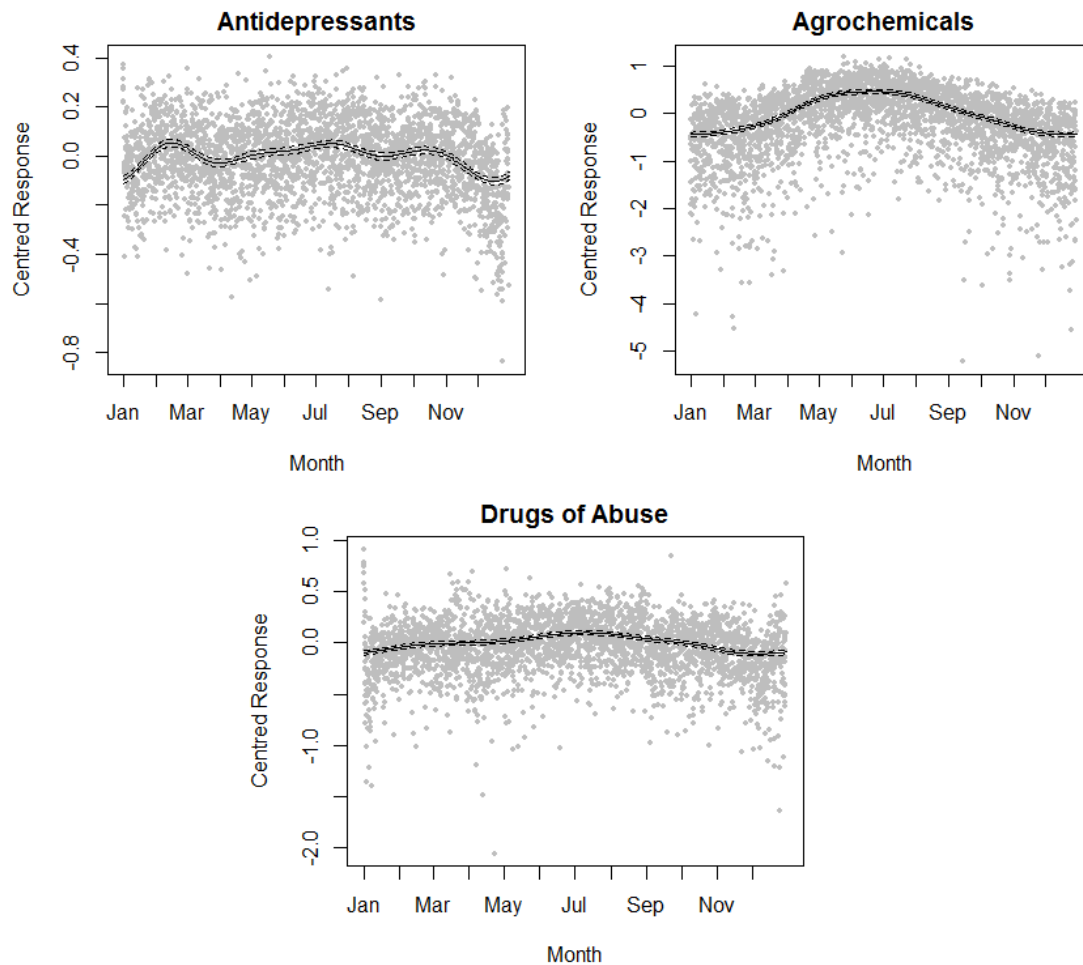


Figure 3. Seasonal patterns in the number of accesses made to pages related to antidepressants (top left), agrochemicals (top right) and drugs of abuse (bottom), as estimated from a generalised additive model.

Figure 4 shows the average number of accesses for each day of the week. This indicates that accesses are, on average, highest on Sundays, with an average of 4.35 (95% CI: 4.28, 4.42) accesses per registered user. Sundays were followed closely by Mondays where the average number of accesses per registered user was found to be 4.26 (95%

CI: 4.20, 4.31). The average number of accesses made tends to decrease between Monday and Friday by 4.6% (95% CI: 4.1%, 6.1%), before increasing into the weekend. However the percentage difference in accesses from Friday to Sunday is small, at only 7.5% (95% CI: 6.1%, 8.9%).

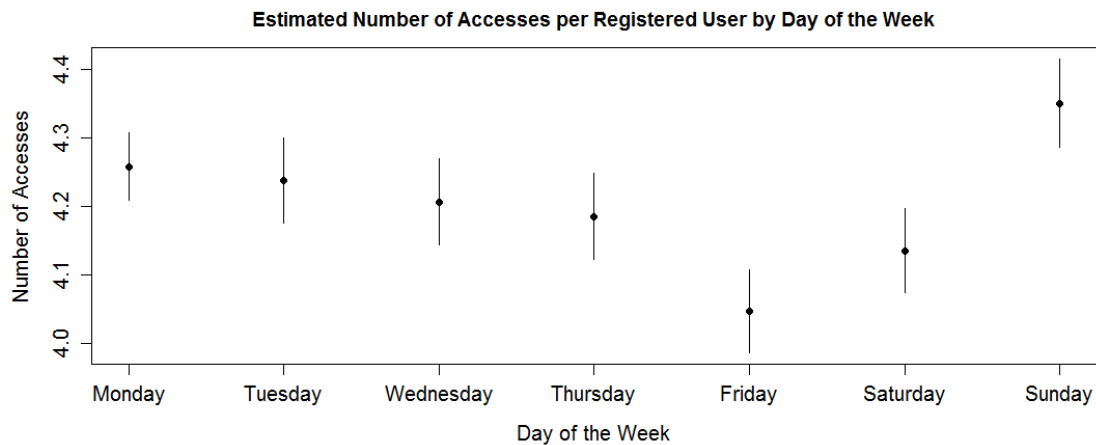


Figure 4. Average number of accesses for each day of the week (95% confidence intervals are shown by the vertical lines). Note y-axis does not start at zero.

Regional Variation

The analysis carried out a regional level indicated that there was a difference between the overall rates at which different regions use the system (Table 1). Using West Midlands as the baseline, since this was the region with the median average rate of accesses, this shows that the most prolific users of the system, having accounted for the population and the number of registered TOXBASE users in a given region, are regions which lie in the north of England and in particular, the North East and Yorkshire and the Humber. Interestingly, Scotland and Wales use the system at around about the median rate, while the more southern regions of England appear to use the system at a significantly lower than average rate.

Table 1. Relative rate of accesses (per 1,000 Population) made to TOXBASE for each region compared to the West Midlands region – these values also account for the number of hospitals in each region at a given time point.

Region	Estimate
North East	1.3281 (1.2478,1.4136)
Yorkshire and the Humber	1.2227 (1.1590,1.2898)
North West	1.1050 (0.9824,1.2428)
East Midlands	1.0216 (0.9375,1.1133)
Wales	1.0076 (0.9547,1.0635)
West Midlands	1.0000
Scotland	0.8807 (0.7592,1.0215)
East of England	0.8429 (0.7944,0.8943)
South West	0.8292 (0.7555,0.9101)
South East	0.6863 (0.6075,0.7753)
London	0.6631 (0.5919,0.7429)

There was no evidence of a difference in any of the trends examined, and these were all similar to those for the overall analysis. As in Figure 2, the long-term trend indicates that the daily rate of access per user has increased in all regions over the period studied. However, in this case, the confidence interval for the first derivative of the function for the long term trend is wholly positive at the end of the series, meaning that there is no indication that accesses are levelling off.

The estimated seasonal trend in the regional level model is also similar to that shown in Figure 2, and as before indicates that there are three separate peaks in accesses

to TOXBASE, in February, July and October. The day of the week effect is similar to that in Figure 4, with accesses decreasing during the week before increasing from a minimum on Friday to a maximum on Sundays.

Discussion

The analysis carried out indicates that there are consistent trends in usage of the TOXBASE database in British emergency departments. One clear feature is that access to TOXBASE has been increasing since 2008. Indeed it has been increasing since the NPIS first advised on-line services as the initial point of contact in simple poisoning in 2005 [9]. One explanation might be an increase in the incidence of poisoning in Great Britain, but until 2012 trends in drug related deaths in England and Wales indicated a decrease [10]. Drug related death in Scotland, however, appears to be following a similar, although perhaps less extreme, increasing trend to those seen in Figure 2 [11]. Drug deaths represent a small fraction of all poisoning in Britain.

Trends in admission numbers for Scotland, England and Wales do not suggest increases of the magnitude shown in this study [12, 13]. There may be increases in the number of presentations to emergency departments, which are not reflected in the admissions data, or perhaps an increase in the proportion of presentations that result in checking management on TOXBASE. Without data on numbers of presentations, it will be difficult to refute these hypotheses.

The seasonal patterns highlighted appear to suggest that there are three small but clear peaks in TOXBASE accesses, regardless of location, which occur in February, July and October. Meanwhile, two of the minima in the observed trends occur around the two main Christian holidays: Easter and Christmas. This “holiday effect” has been noted previously in a study on self-harm attempts using data collected from across Europe by the World Health Organisation. The peak in February is likely related to the

fact that it lies between these two holidays [14], or may be due to Seasonal Affective Disorder, which tends to exhibit depressive symptoms in mid-winter [15].

The small increase in October precedes the normal time that the UK introduces daylight saving, but is within a few weeks of the start of the new University term. This effect may be to do with the “broken promises” principle outlined in a paper by Gabennesch [16] which suggests that the disappointment after a new beginning can have a detrimental effect on vulnerable individuals. This peak is, interestingly, more than 2 months after the normal start date for new junior doctors in the UK, now in early August each year.

That the overall seasonal pattern is somewhat similar to the pattern seen in accesses to pages concerning antidepressants supports that accesses may be driven, at least in part, by incidents of self-harm related to depression. The peak in summer could, in addition, be linked to an increase in outdoor activity, and the wide variety of plants and animals which are present in the summer months as suggested in an annual report from the Swedish poisons centres [17]. There is also a clear indication that calls made to poisons centres across the US peak in summer each year, although this was not formally assessed [18, Figure 3]. A study on seasonality in acute illicit drug overdose indicated that there are peaks in both accidental and intentional overdose in summer, as was found in accesses made to TOXBASE. The authors attribute this to possible higher levels of alcohol consumption in mid-summer as well as the Gabennesch principle [19], although this may also be due to increased drug use during festivals [20].

There has been some research done in relation to seasonality in suicides and attempted suicides. The results found in these can differ from study to study, and the patterns found in these are generally different from the patterns found in this analysis. Three studies, two carried out in England, one in the USA, detected a peak in cases of

suicides in spring and early autumn [21, 22, 23], which was corroborated by a literature review specifically focussing on suicide by drowning [24]. Meanwhile, a study on suicide in Ireland found that, while there was a spring peak, in contrast to the other studies there was an autumn trough [25]. An Australian study found that, while there was a seasonal trend in violent methods of suicide, non-violent methods such as poisoning displayed no seasonal effect [26]. While these are in contrast to the results presented here, a Norwegian study found a seasonal pattern in non-fatal opioid overdoses, which approximately corresponds to the results of this analysis. They found that incidence rates were lowest in April, with a peak in August [27].

The weekly patterns found suggest that, again regardless of location, accesses to the database peak on Sundays, decrease during the week and then a small increase at the weekend by 7% from Friday to Sunday. A similar pattern was found in the number of self-harm presentations in a study on self-harm using the National Self-Harm Registry Ireland [28], and also in a study on attempted suicides in Helsinki, where suicide attempts were found to cluster around the weekend [29]. This sudden increase may also reflect recreational drug use over the weekend [30]. It has been noted previously that presentation of poisoned patients to emergency departments is higher between Friday evening and Tuesday night [31]. More recently, in their 2014 annual report the Irish National Poisons Information Centre indicated that calls to their service were higher earlier in the week than later in the week [32], which is in contrast to the findings presented here.

These data indicate that there are some consistent trends in the incidence of poisoning in Britain, as shown by the higher number of TOXBASE accesses at the weekend, and at particular times of the year. However, the impact of this on the National Health Service, particular in terms of comparisons of hospital admissions and

TOXBASE accesses is unclear. This work thus provides a firm basis for further work which will examine how usage of TOXBASE might impact the rate of admission to hospital due to poisoning.

References

- [1] National Poisons Information Service 2014/2015 Annual Report. National Poisons Information Service (UK); 2015. (Public Health England Publication)
- [2] National Poisons Information Service: TOXBASE [Internet]. UK: National Poisons Information Service; 2017 [cited 2017 May 3]. Available from: <http://www.npis.org/toxbase.html>
- [3] The National Institute for Health and Care Excellence: Poisoning or Overdose – Management. UK: National Institute for Health and Care Excellence; 2017 [cited 2017 May 3]. Available from: <https://cks.nice.org.uk/poisoning-or-overdose#>
- [4] Wood SN (2006) Generalized Additive Models: An Introduction with R. Chapman and Hall/CRC.
- [5] R Core Team (2013). R: A language and environment for statistical computing R Foundation for Statistical Computing, Vienna, Austria. Available from: <http://www.R-project.org/>
- [6] Office of National Statistics. 2015 Population Estimates Analysis Tool
Downloaded From:
<https://www.ons.gov.uk/peoplepopulationandcommunity/populationandmigration/populationestimates/datasets/populationestimatesanalysisistool>
- [7] Curtis CJ, Simpson GL. 2014 Trends in bulk deposition of acidity in the UK, 1988-2007, assessed using additive models. *Ecological Indicators*; 37; 274-286
- [8] Simpson GL. 2014 Identifying periods of change in time series with GAMs. Available from:
<http://www.fromthebottomoftheheap.net/2014/05/15/identifying-periods-of-change-with-gams/>.
- [9] National Poisons Information Service 2005/2006 Annual Report. National Poisons Information Service (UK); 2006. (Public Health England Publication)
- [10] Fearne V. 2015 Deaths related to drug poisoning in England and Wales: 2015 registrations, Office of National Statistics

Available From:

<https://www.ons.gov.uk/peoplepopulationandcommunity/birthsdeathsandmarriages/deaths/bulletins/deathsrelatedtodrugpoisoninginenglandandwales/2015registrations>

- [11] National Records of Scotland. 2016 Drug-related deaths in Scotland in 2015, National Statistics. Available from:
<https://www.nrscotland.gov.uk/files//statistics/drug-related-deaths/15/drugs-related-deaths-2015.pdf>
- [12] Barnsdale L, Targosz J 2016 Drug Related Hospital Statistics Scotland 2015/16, Information Services Division
Available from: <https://www.isdscotland.org/Health-Topics/Drugs-and-Alcohol-Misuse/Publications/2016-09-27/2016-09-27-DrugHospitalStatistics-Report.pdf>
- [13] Health and Social Care Information Centre. 2016 Statistics on Drug Misuse, National Statistics. Available from:
<http://content.digital.nhs.uk/catalogue/PUB21159/drug-misu-eng-2016-rep.pdf>
- [14] Jessen G, Jensen BF, Arensman E, et al. 1999 Attempted suicide and major public holidays in Europe: findings from the WHO/EURO Multicentre Study on Parasuicide. *Acta Psychiatrica Scandinavica*; 99, 412-418
- [15] MIND. 2016 Seasonal Affective Disorder: SAD Symptoms website Reference [visited 2017 August 29] URL: <https://www.mind.org.uk/information-support/types-of-mental-health-problems/seasonal-affective-disorder-sad/sad-symptoms/#.WaU4qrKGOuk>
- [16] Gabennesch H, 1988 When Promises Fail: A Theory of Temporal Fluctuations in Suicide. *Social Forces*; 67:1, 129-145
- [17] Swedish Poisons Information Centre Annual Report 2016. [cited 2017 June 6] Available in English from:
<https://giftinformation.se/globalassets/publikationer/gic-annual-report-2016.pdf>
- [18] Mowry JB, Spyker DA, Brooks DE, et al. 2015 Annual Report of the American Association of Poison Control Centers' National Poison Data System, (NPDS): 33rd Annual Report. *Clinical Toxicology*; 54:10, 924-1109
- [19] Rocchi MBL, Miotto P, Preti A. 2004 Seasonal variation in suicides and in deaths by unintentional illicit acute drug intoxications. *Addiction Biology*; 9, 255-263

- [20] Dilkes-Frayne E. 2015 Drugs at the campsite: Socio-spatial relations and drug use at music festivals. *International Journal of Drug Policy*; 33, 27-35
- [21] Simkin S, Hawton K, Yip PSF, Yam CHK. 2003 Seasonality in Suicide: A Study of Farming Suicides in England and Wales. *Crisis*; 24(3), 93-97
- [22] Cavanagh B, Ibrahim S, Roscoe A, Bickley H, While D, Windfuhr K, Appleby L, Kapur N. 2016 The timing of general population and patient suicide in England, 1997-2012. *Journal of Affective Disorders*; 197, 175-181
- [23] Canner JK, Giuliano K, Selvarajah S, Hammond ER, Schneider EB. 2016 Emergency department visits for attempted suicide and self harm in the USA: 2006-2013. *Epidemiology of Psychiatric Sciences*; 1-9
- [24] Haw C, Hawton K. 2016 Suicide and Self-Harm by Drowning: A Review of the Literature. *Archives of Suicide Research*; 20(2), 95-112
- [25] Casey P, Gemmell I, Hiroeh U, Fulwood C. 2012 Seasonal and socio-demographic predictors of suicide in Ireland: A 22 year study. *Journal of Affective Disorders*; 136, 862-867
- [26] Rock D, Greenberg DM, Hallmayer JF. 2003 Increasing seasonality of suicide in Australia 1970-1999. *Psychiatry Research*; 120, 43-51
- [27] Madah-Amiri D, Clausen T, Myrmet L, Brattebø G, Lobmaier P. 2017 Circumstances surrounding non-fatal opioid overdoses attended by ambulance services. *Drug and Alcohol Review*; 36, 288-294
- [28] Griffin E, Dillon CB, O'Regan G, et al. 2017 The paradox of public holidays: Hospital-treated self-harm and associated factors. *Journal of Affective Disorders*; 218, 30-34
- [29] Valtonen H, Suominen K, Partonen T, et al. 2006 Time patterns of attempted suicide. *Journal of Affective Disorders*; 90; 2-3, 201-207
- [30] Parker H, Williams L, Aldridge J. 2002 The normalization of "sensible" recreational drug use: Further evidence from the North West England Longitudinal Study. *Sociology*; 36:4, 941-964
- [31] Thomas SHL, Bevan L, Bhattacharyya S, et al. 1996 Presentation of poisoned patients to accident and emergency departments in the North of England. *Human & Experimental Toxicology*; 15, 466-470
- [32] Poisons Information Centre of Ireland Annual Report 2014 [Cited 2017 June 6] Available from: <http://www.poisons.ie/docs/Final%20Report%202014.pdf>