

SCIENTIFIC REPORTS



OPEN

Changeover from signalling to energy-provisioning lipids during transition from colostrum to mature milk in the giant panda (*Ailuropoda melanoleuca*)

Received: 19 July 2016
Accepted: 11 October 2016
Published: 03 November 2016

Tong Zhang^{1,†}, David G. Watson¹, Rong Zhang^{1,2}, Rong Hou³, I. Kati Loeffler^{3,‡} & Malcolm W. Kennedy⁴

Among the large placental mammals, ursids give birth to the most altricial neonates with the lowest neonatal:maternal body mass ratios. This is particularly exemplified by giant pandas. To examine whether there is compensation for the provision of developmentally important nutrients that other species groups may provide *in utero*, we examined changes in the lipids of colostrum and milk with time after birth in giant pandas. Lipids that are developmental signals or signal precursors, and those that are fundamental to nervous system construction, such as docosahexaenoic acid (DHA) and phosphatidylserines, appear early and then fall dramatically in concentration to a baseline at 20–30 days. The dynamics of lysophosphatidic acid and eicosanoids display similar patterns, but with progressive differences between mothers. Triglycerides occur at relatively low levels initially and increase in concentration until a plateau is reached at about 30 days. These patterns indicate an early provision of signalling lipids and their precursors, particularly lipids crucial to brain, retinal and central nervous system development, followed by a changeover to lipids for energy metabolism. Thus, in giant pandas, and possibly in all bears, lactation is adapted to provisioning a highly altricial neonate to a degree that suggests equivalence to an extension of gestation.

Milk is the sole source of nutrition for mammalian neonates, and is also an essential conduit of immune support for many species of infant. Mammary secretions change dramatically from colostrum ('first milk') to mature, main-phase milk during the immediate post-partum period. Broadly, colostrum tends to be more protein-rich and lipid-poor than later milk, and is particularly rich in immunoglobulins and innate anti-microbial factors^{1–7}. The change to mature milk represents a switch to more energy-rich nutrition in which sugars and fats may predominate^{1,2}.

The neonates of some species are absolutely dependent for their survival and development on colostrum from their mothers, whilst others are less so. The period of time for this dependence – and hence the duration of the colostrum phase of lactation – also varies among species. The difference is largely a function of the type of placenta involved. For instance, species with epitheliochorial placentae, such as ungulates, cannot transfer immunoglobulins from maternal to foetal circulations. Colostrum is thereby essential to survival of these neonates². At

¹Strathclyde Institute of Pharmacy and Biomedical Sciences, 161, Cathedral Street, Glasgow G4 0RE, Scotland, UK.

²Institute of Clinical Pharmacology, Guangzhou University of Chinese Medicine, No. 12 Jichang Road, Guangzhou 510405, P.R. China. ³Sichuan Key Laboratory of Conservation Biology for Endangered Wildlife, Chengdu Research Base of Giant Panda Breeding, 1375 Panda Road, Northern Suburb, Chengdu, Sichuan Province 610081, P.R. China.

⁴Institute of Biodiversity, Animal Health and Comparative Medicine, and Institute of Molecular Cell and Systems Biology, College of Medical, Veterinary, and Life Sciences, Graham Kerr Building, University of Glasgow, Glasgow G12 8QQ, Scotland, UK. [†]Present address: Institute of Cancer Sciences, Wolfson Wohl Translational Cancer Research Centre, Garscube Estate, Switchback Road, Glasgow G61 1QH, UK. [‡]Present address: International Fund for Animal Welfare, 290 Summer St., Yarmouth Port, MA 02675, USA. Correspondence and requests for materials should be addressed to T.Z. (email: tong.zhang@glasgow.ac.uk) or M.K. (email: malcolm.kennedy@glasgow.ac.uk)

the other extreme are species with haemochorial placentae (e.g. humans) whose placentae transport immunoglobulins from maternal to foetal blood circulations prior to birth, although this is confined to immunoglobulin G (IgG)^{2–4}.

Ursids (bears) give birth to the most altricial (developmentally immature) neonates with the lowest neonate:maternal body mass ratios amongst eutherian (“placental”) mammals⁸. We hypothesised that the ursine lactation strategy is adapted to meet the developmental needs of highly altricial young in two main ways. First, ursine milks may change more slowly from colostrum to main-phase milk than do milks of other species groups. Second, the mixture of components of ursine colostrum may be unusual if not unique among eutherian mammals. Our examination of proteomics and metabolomics have upheld this hypothesis^{9,10}. The objective for the study reported here was to test whether these predictions hold true for lipids, particularly given the special roles lipids have in development.

We chose giant pandas for this study because they exhibit an extreme even amongst ursids in the altriciality of their neonates¹¹. In addition, the captive breeding program for giant pandas in China and its associated intensive human handling of the animals provided an opportunity for serial milk sampling in the immediate post-partum period. In our previous studies of panda milk, we discovered the transition between colostrum to mature-phase milk to be unusually, perhaps uniquely, prolonged amongst eutherians⁹. That study revealed a slow maturation in the protein profiles. The changeover and maturation process of these profiles takes approximately thirty days to complete, over which period certain species of oligosaccharide disappeared, whilst others appeared. Further detail was added in a second study, in which a broad-spectrum metabolomics approach discerned three phases in the transition from colostrum to mature lactation¹⁰. The milks of different mothers in that study were at first similar in composition, then diverged after about seven days.

There are no precise criteria that define the end of the colostrum period and the onset of main-phase lactation for any species. We here take the colostrum phase to end when all the major components of milk reach an approximate steady state, although slight modifications in composition may still occur during the main phase. By this definition, the colostrum period of giant pandas ends at about 30 days^{9,10}, which is considerably longer than is known for any other eutherian, and stands in stark contrast to the less than 24 hours in, for example, Atlantic grey seals (A. Lowe, P. Pomeroy, D.G. Watson, M.W. Kennedy, unpublished).

Lipids in milk could be broadly divided into those needed for metabolic energy support, the construction of membranes and antimicrobial activities, and those that serve as immune and developmental signalling molecules or their precursors. Energy for foetuses is almost exclusively provided in the form of trans-placental delivery of glucose and lactate¹². Triglyceride transfer for this purpose is minimal or non-existent, and foetal gluconeogenesis is essentially inactive¹². After birth, however, milk offers a switch to lipid- and lactose-based energy provision, the balance of which varies from species to species^{1,2}.

Large-brained mammals exhibit a heavy requirement for polyunsaturated fatty acids (PUFAs) for brain development^{12,13}. This appears to be satisfied in utero by translocases that transport crucial PUFAs such as arachidonic (AA) and docosahexaenoic (DHA) acids en masse from the maternal to the foetal circulation, resulting in higher levels of PUFAs in foetal than maternal circulations¹². Trans-placental transportation of PUFAs may be confined to species with haemochorial placentae¹². It is minimal in those with epitheliochorial placentae (e.g. sheep¹⁴), and may also be restricted in species with endotheliochorial placentae¹⁵. The latter placental type is widespread within the Carnivora^{16–18}, among whom there may be a need for immediate post-partum provision of PUFAs for continued neonatal development. This requirement may be particularly urgent for highly altricial neonates.

Here we show that there is a slow transition between colostrum and mature milk lipid profiles in giant pandas, and that some species of lipid are at first abundant and then fall away, whilst others increase with time and stabilise in concentration. The main changeover, like that which we demonstrated for the protein, oligosaccharide, and metabolome profiles^{9,10}, occurs between twenty and thirty days. Importantly, lipids such as PUFAs that are considered to be crucial for brain growth and for developmental and immune signalling are present at their highest levels only very early in lactation, while those needed predominately for energy generation and membrane construction appear later.

Results

Lipid profile of giant panda milk. The analysis of milk lipids required sequential rounds of mass spectrometry (MS) and ion fragmentation, particularly for monoacyl and diacyl glycerolipids in which the acyl tails are heterogeneous and MS analysis does not directly identify the positions of carbon:carbon double bonds in a fatty acid chain. A summary of the main types of lipids that were identified is given in Table 1 (a more detailed version of this information is provided in Supplementary Table S1). The principal lipids were phospholipids, sphingomyelins, glycerolipids (e.g., triacylglycerols/triglycerides (TAGs)), free fatty acids (FFAs) and sterols, with a few other classes contributing to a total of 403 distinct species. The lipids are typical of mammalian milks, and ranged as expected from those broadly involved in energy provision (TAGs), membrane construction (phospholipids), precursors of developmental and immune or inflammatory signals, and lipids enriched in the nervous system and retina (PUFAs).

Developmental and signalling lipids and their precursors. Of particular interest, given their abundance in the nervous system and their roles as precursors to pharmacologically and immunologically active compounds, certain PUFAs (e.g. docosahexaenoic acid (DHA), Fig. 1) were relatively abundant very soon after birth but then decayed to a low plateau by about 30–40 days. The same applied, albeit less clearly, to eicosapentaenoic (EPA) and arachidonic acids (AA) (Supplementary Figure S1). Linoleic (LA) and α -linolenic acids (ALA), both of which are absolute essential fatty acids for humans, increased with time after birth (Supplementary Figure S1).

A group of lipids that is increasingly recognised as being important in signalling is the phosphatidylserines (PS). Additional multiple stage mass spectrometry (MSⁿ) analysis of the isoforms in the milk samples showed that

Main class	Subclass	Number of species detected	Examples of deductions from multiple stage mass spectrometry (MS ⁿ) analysis (C:D) ^a
Phosphatidylserine (PS)	Monoacyl-PS	25	PS (18:0/0:0)
	Diacyl-PS	38	PS (18:0/22:6)
Phosphatidylcholine (PC)	Monoacyl-PC	23	PC (18:1/0:0)
	Diacyl-PC	43	PC (16:0/16:0)
Phosphatidylinositol (PI)	Monoacyl-PI	2	PI (20:4/0:0)
	Diacyl-PI	16	PI (20:4/18:0)
Phosphatidylethanolamine (PE)	Monoacyl-PE	16	PE (18:1/0:0)
	Diacyl-PE	19	PE (18:1/16:0)
Sphingomyelin (SM)		27	SM (d18:1/24:1)
Glycerolipids (GL)		49	Triacylglycerol (TAG) (52:6)
Free fatty acid (FFA)		23	Docosahexaenoic acid (DHA) (22:6)
FFA derivatives		65	
Sterols		14	
Others		43	
Total		403	

Table 1. Summary of lipids found in giant panda milk. Please see Supplementary Table S1 for additional details on ion classes of the lipids listed here, their typical generic fragmentation ions, and predicted structural classes. ^aC, number of carbon atoms; D, number of double bonds.

the acyl chains of the major PS components comprised 16, 18, 20 or 22 carbons with a diverse degree of unsaturation from 1 to 6 C=C bonds. Unlike other polar lipids (e.g. phosphatidylcholines; PC) some PSs were detected with highly unsaturated acyl chains, e.g. PS (18:0/22:6) and lysoPS (0:0/22:6), which we have not found to have been reported in studies of polar lipids in other milks using similar analytical techniques.

Figure 1 also shows the development of these two PSs during early lactation, showing that their levels are high in the first 7 days then decline rapidly (for one of the animals, Yuan Yuan, in a close to exponential decay) to a low plateau by about 20 days postpartum. Interestingly, a similar time course was obtained with DHA, which is also present as the unsaturated acyl chain of these two PSs (Fig. 1). The neonate is therefore supplied with this conditionally essential fatty acid either as the free fatty acid (FFA) or as one chain of the predominant PSs.

Lysophosphatidic acid, which also has several direct biological activities¹⁹, showed a distinct exponential decline with time after birth in one animal (Yuan Yuan; Supplementary Figure S1), but there was only slight evidence of this for Li Li (for whom the sampling period was short), and none for Xiao Yatou.

Given the observed dramatic changes in the concentrations of key lipids in development and energy provision, we embarked on a broader statistical analysis of the changes in all the lipid classes found, and how these changes may vary among mothers.

Sequential changes and progressive divergence of lipid profiles between individual mothers. Figure 2 shows the score plot of the Orthogonal Partial Least Squares Discriminant Analysis (OPLS-DA) model generated by comparing the samples collected before (red spots) with after (blue spots) 7 days postpartum. Samples collected from all three mothers before day 7 show similar rates of change with time. Their clustering around zero on the vertical axis indicates that their compositions are similar to one another. In contrast, the wider scatter on the vertical axis after day 7 indicates progressive, rapid, and approximately simultaneous divergence among individual mothers, as noted previously for other milk components¹⁰.

Figure 3 shows the distribution of the lipid profiles as an S-plot from the OPLS-DA model. Data points located far out on diagonally opposite wings of the “S” indicate lipids that changed significantly and consistently in relative abundance from colostrum to mature milk. The four lipids at the most extreme positions on the “S” distribution (labelled in Fig. 3) were identified as choline phospholipids but with different acyl chain compositions. These lipids exhibited divergent concentration trends during the lactation period such that PC (16:0/18:1) was initially abundant in colostrum, whereas the (18:2/18:0) (18:1/18:1) isoform only became abundant in mature milk. Plots of the relative concentrations of these two lipids with time show that the changeover was complete by about day 20 (Fig. 1).

Other lipid classes, however, showed either no significant change or a weaker differentiation between colostrum and mature milk than did the PCs. For instance, in Fig. 3 the glycerolipids (indicated in blue) distribute along the vertical axis from 0.4 to -0.8 (low in colostrum but high in mature milk), and PSs (in red) had a slightly overlapping but inverse distribution along the y-axis from -0.3 to 0.85 (high in colostrum but low in mature milk). In both cases, the data points cluster close to the 0 on the horizontal axis, indicative of either low abundance, or, more likely, weaker MS signals than other compounds because they ionise poorly. Interestingly, the time course for PSs was also followed by lysoPSs in being high in colostrum and low in mature milk (Fig. 1).

The level of TAGs dramatically increased with time postpartum, reaching a plateau after about 30 days (Fig. 1). The kinetics of this change was similar for all three giant panda mothers. The increase in TAGs mirrors a cruder

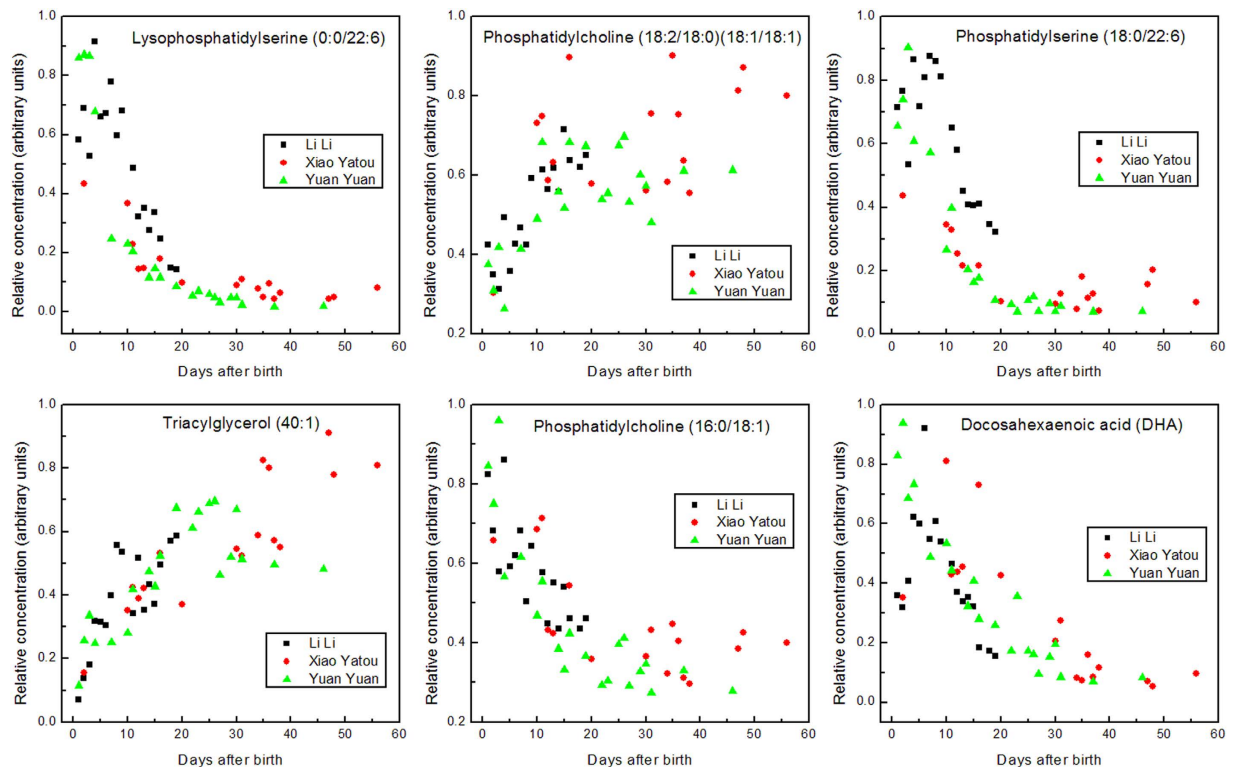


Figure 1. Time course of post-parturient changes in selected lipids in giant panda milk. The values are relative areas under liquid chromatography signal peaks for each lipid. These values show relative changes with time after parturition for each lipid species, but are not comparable between the different lipid species.

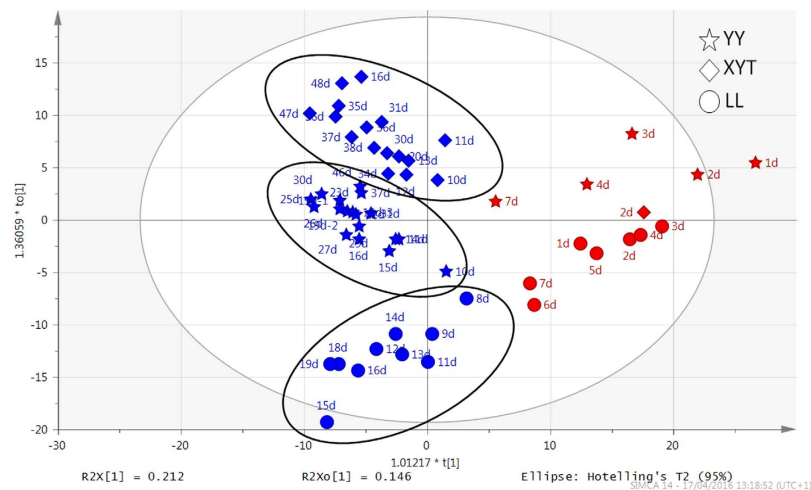


Figure 2. OPLS-DA score plots of milk samples depicting variation in the lipid components of individual milk samples. Samples were collected serially from three giant pandas Yuan Yuan (YY; stars), Xiao Yatou (XYT; diamonds), and Li Li (LL; circles). The horizontal axis represents the variation in composition among groups, and the vertical axis represents the variation within groups. Lipid components in the milks were relatively similar among mothers until 7 days postpartum as indicated by a narrow distribution along the vertical axis (red symbols). Divergence in lipid component analysis among mothers became increasingly apparent with time after the seventh day of lactation, as indicated by a broadening distribution towards the left along the horizontal axis (blue symbols). The changes in concentrations of selected classes of lipids over time are illustrated in Fig. 1, and in Supplementary Figures S1 and S3.

observation of a change in fat content with time in that the low density fat layer appearing on milk samples that were centrifuged in the cold is small in colostrum, and increases with time (Supplementary Figure S2).

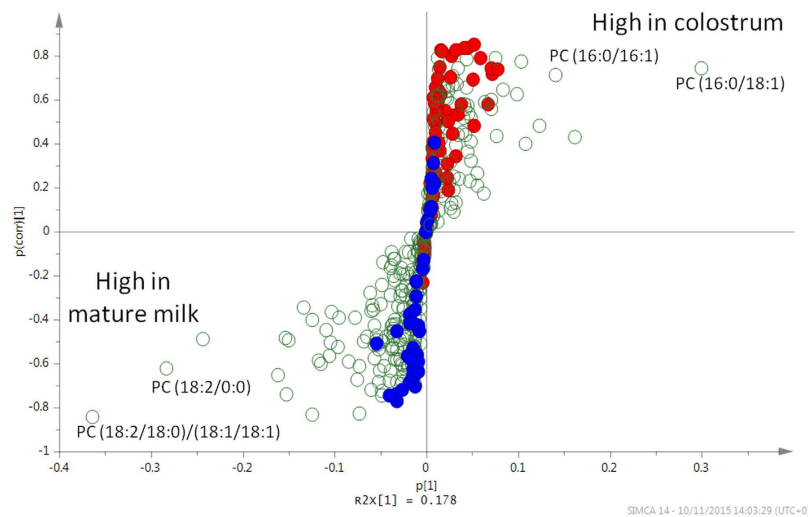


Figure 3. Changes in giant panda milk lipids in early lactation. Each point represents a single lipid species. Those appearing in the top right arm of the “S” were high in colostrum and low in mature milk, and those to the bottom left arm were most abundant in mature milk and relatively low in colostrum. This S-plot derives from OPLS-DA of 55 milk samples collected serially after birth from three giant pandas. The horizontal axis variable represents the relative abundance of a given lipid in giant panda milk, increasing in either direction from 0. The vertical axis variable represents the statistical confidence such that a positive value for a lipid indicates that it is high in colostrum (to a maximum of +1); a lower and to a negative value indicates that that lipid is low in colostrum and increasingly high in mature milk (to a minimum of -1). Values in the centre of the plot near 0 are close to the noise level, representing a high risk for spurious correlations, and therefore appear to be similar between colostrum and main phase milk. Thus, data points falling in the upper right or lower left corners of the plot represent those whose representation in discrete milk phases may be deduced with the greatest confidence. Glycerolipids (GL) are shown in blue, phosphatidylserine (PS) lipids in red, and other lipid classes (including phosphatidylcholines; PC) in open circles. Note that no red symbol appears at the lowest vertical axis values and no blue symbol locates to the highest values, indicating either that they do not change with time (locating in the centre) or change only in one direction (PSs high in colostrum; TGs high in mature milk). The changes in relative concentrations with time after birth for two of the four phosphatidylcholines named in the diagram are plotted in Fig. 1. Please see Supplementary Panel S1 for a more detailed explanation of the lipid analysis.

Discussion

The founding question to this work was whether the bearing of highly altricial neonates by ursids is mirrored by a lactation strategy that is unusual amongst eutherians. Specifically, is there a prolonged transition period between colostrum and main-phase milk production, and are the constituents of the milk modified to compensate for the early developmental state of the neonates?

In the ursid species that exhibits the highest degree of altriciality, the giant panda, we have here found that there is indeed a prolonged maturation phase in lipid profiles that takes about thirty days to complete. This parallels the time course for other components of giant panda milk, namely proteins and oligosaccharides⁹, and the overall metabolome¹⁰. The changes in lipid profiles reveal a dramatic shift in the functional balance of the lipid content from an early predominance of lipids that are precursors of signalling molecules and that are essential for construction of the central nervous system, to those predominately involved in energy metabolism.

Signalling lipids dominate the lipid profile of the prolonged colostrum period. Mammals are unable to introduce C=C double bonds in fatty acids beyond carbons 9 and 10, which is why the polyunsaturated LA (ω -6; 18:2, 9, 12; 18:2n-6) and ALA (ω -3; 18:3, 9, 12, 15; 18:3n-3) are essential in the diet. The so-called conditionally essential fatty acids are derivatives of these and include DHA, AA, and EPA. While some of these PUFAs are major components of neuronal tissues, they also have central roles in developmental and immune activation as precursors to signalling lipids such as prostaglandins and leukotrienes. The lipid classes that predominate early and then diminish in giant panda lactation include DHA as the free fatty acid and as an acyl chain of a PS and a lysoPS, all of which show similar time courses (Fig. 1). DHA is crucial to visual acuity and neural development and is the most abundant ω -3 fatty acid in the brain and retina of mammals^{13,20–26}. DHA also modulates the carrier-mediated transport of choline, glycine, and taurine²⁷, the latter being crucial to neuronal development²⁸. Taurine is possibly a dietary-essential compound in bears as it is in some other Carnivora^{29–31}. The time courses for the decline of two other PUFAs, AA and EPA, in colostrum are similar to that for DHA, albeit less well defined (Supplementary Figure S1).

The decline in DHA in giant panda milk with time, which is also seen in human colostrum³², may have several explanations. First, that lipid desaturation mechanisms in neonates required to convert LA and ALA may initially be inadequate in highly altricial neonates (although this does not apply to preterm humans³³). Second, the substantial requirement by neonatal mammals for DHA may not be sufficiently supplied by the relatively low absolute

fat content of colostrum, and elevated levels of the FFA are supplied to compensate³². Third, the intestines of neonatal mammals are susceptible to inflammatory conditions that may be ameliorated by anti-inflammatory lipid mediators such as resolvins derived from DHA (and EPA), potentially explaining lower incidence of intestinal inflammation in breast-fed rather than formula-fed human infants³². At this stage our analysis has not discriminated the anti-inflammatory resolvins and lipoxins from other eicosanoid lipids, although we did find diminishing levels of the pro-inflammatory leukotrienes (Supplementary Figure S1) such as are also found in human milk³².

Other important roles of milk fatty acids include direct anti-microbial activities³⁴ that will be relevant to a newborn suddenly exposed to a microbe-rich environment and whose gut microbiome is naïve and must establish a functional balance^{35,36}. Of particular potential importance to a hairless, altricial neonate such as a giant panda cub is the integrity of the epidermal permeability barrier to avoid transcutaneous water loss. There is a particular role for LA in the regulation of epidermal water-permeability, in the form of special O-acylated ceramides^{37–41}.

PSs comprise important membrane structural components in most cells. They are particularly enriched in the inner leaflet of the plasma membrane in neural tissues where they are key to several signalling pathways, and make up 13–15% of the phospholipids in the human cerebral cortex^{42,43}. Moreover, as with DHA, PS-dependent signalling is directly involved in processes of neuronal differentiation and survival^{42,43}. These roles further emphasise the potential significance of maternal delivery of PS, lysoPS and DHA in the immediate neonatal period (Fig. 1). The PS receptor, and therefore also its ligand, is essential during embryogenesis in mice⁴⁴, which also produce altricial neonates.

PSs also form protein-phospholipid complexes that initiate calcification during the formation of bone^{45,46}, which again could be particularly relevant to a highly altricial neonate. The lyso forms of PSs are particularly notable for involvement in cellular signalling, including neural development, that could be crucial to development of mammalian embryos and survival of neonates^{19,47,48}. Also potentially crucial to a newborn is that lysophospholipids, especially lysoPSs, are increasingly being found to have potent immunoregulatory properties^{47,49–54}.

The other major class of phospholipids in giant panda milk, the PCs, are major components of biological membranes and pulmonary surfactant. Our analysis of giant panda colostrum indicated changes in provision of PCs to the neonate with time (Fig. 1). There was, for instance, an intriguing complementarity in time course over the first 20 days, in which one PC isoform (16:0/18:1) was present early and then diminished, whereas the abundance of another (18:2/18:0)(18:1/18:1) was initially low and then increased (Fig. 1).

Triacylglycerides increasingly appear in the transition to mature milk. Lipids that dominate the profile of early colostrum appear to be those involved in a range of developmental functions. In contrast, TAGs, which are likely to be more involved in provision of energy, appear only slowly with time (Fig. 1). An early deficit in energy supply may be associated with the slight loss of body mass seen in panda cubs (as is common amongst mammal neonates) immediately after birth¹⁰, but also that neonatal cubs may not be able to digest TAGs efficiently. The persistence of bile-salt-activated lipase (commonly found in milks and thought to aid digestion of triglycerides⁵⁵) in giant panda milk supports this suggestion, in that their maternal provision may be necessary until a cub's own pancreatic production of the enzyme becomes sufficient⁹.

With regard to energy provision, it is also noteworthy that lactose is present in giant panda milk initially and diminishes rapidly, inversely to the appearance of TAGs (refs 9 and 10 and Fig. 1). A similar, though much slower conversion from sugar- to lipid-based energy supply occurs in marsupials^{56,57}.

The imaginative hypothesis⁸ explaining why ursids produce such altricial neonates states that mobilisation of fat reserves for gluconeogenesis to supply embryos trans-placentally with glucose is metabolically wasteful during hibernation. Birthing at an early stage of development allows a switch to lipid-based energy supply via milk that reduces the metabolic demand on a hibernating mother. However, giant pandas, like several other species of ursid (Andean, sloth and sun bears), do not hibernate, and there is no indication yet that they had ancestors that did so.

It is nevertheless clear from this and our previous studies^{9,10} that the altriciality of giant panda cubs is indeed reflected in a prolonged maturation from colostrum to main-phase lactation. This period takes about twenty days for lipids that are important in signalling and developmental functions (this study), and about thirty days for TAGs (this study), protein, and oligosaccharide components^{9,10}. Within these transitions, there are intriguing subtleties in the changeovers between compounds, such as for the two PC isoforms mentioned above, and oligosaccharides in which early- and late-appearing forms differ merely in their glycosidic linkages⁹.

Artificial milk replacers cannot mimic the composition and dynamics of neonatal ursine requirements.

Whilst our main interest is in lactation biology of ursids as a whole, this study, together with our previous work^{9,10}, highlights the dramatic, time-dependent changes in the lipid content of giant panda milk. The complexity of biochemical composition in these milks emphasises the inadequacy of artificial milk formulae that are used to supplement or replace giant panda milk. As shown in Supplementary Figure S3, none of the three milk replacers used for giant panda cubs (including one recently developed specifically for giant pandas⁵⁸) provide any of the lipids that predominate for the first twenty days in maternal milk. This deficiency is particularly evident for key PUFAs such as DHA. The analysis presented here and in our proteomic and metabolomic analyses of giant panda milks^{9,10} indicate how critical the biochemical constitution and dynamic of milks are for optimal neonatal development of organ systems (the central nervous system in particular) and the immune system, and for direct maternal immune protection of the neonate.

These observations draw into question the practice of feeding artificial milk formulae as a matter of routine, and the extent to which such a practice compromises particularly the neurological and immune development of giant panda cubs. Moreover, our previous studies have highlighted the risk that these artificial formulae pose to the health of cubs, such as with their high relative content of lactose^{9,10}. The disparate influence of natural milk

and artificial formulae on establishment of an appropriate gut microbiome and avoidance of intestinal disease is also crucial^{35,36}. Taken together, these findings disagree with the simplistic approach for development of panda milk replacers⁵⁸, and emphasise instead the need to revise husbandry conditions to promote full maternal care of panda cubs, and to eliminate artificial feeding in giant panda breeding centres.

Does ursine colostrum reflect a form of external gestation? The term “external gestation” was originally applied to marsupials because they produce neonates of extraordinary altriciality following a very short gestation, and exhibit dramatic alterations in milk components with time^{57,59,60} that may serve to provide nutrients required for early development that eutherians provide *in utero*.

Specifically with regard to lipids, one of the most dramatic changes in marsupial milks is exhibited by lipocalins, a family of proteins that are widely associated with transport of small lipids^{61–63}. Changes in these proteins in marsupial milks may represent a changing requirement for lipid types by the neonate, although there is currently no information on whether these different lipocalins exhibit discrete lipid transportation repertoires. While these marsupial milk-specific lipid carrier proteins do not occur in eutherians (though two forms of a lipid-transporting lipocalin, β -lactoglobulin, do occur in giant panda milk⁹), the changes in lipids we observed in the milk of giant pandas may indicate a similar role of milk in the provision of developmentally-essential lipids to an altricial neonate that in other species of eutherian are provided pre-partum. In this sense, the term “external gestation” may indeed be applicable to bears.

Materials and Methods

Milk collection and processing. Milk samples were collected from three captive-bred giant pandas at the Chengdu Research Base of Giant Panda Breeding, Chengdu, Sichuan Province, P.R. China, in 2012. Please see Supplementary Table S2 for a complete list of sampling dates, studbook numbers, and reproductive histories. Animals were trained to allow milk sampling during routine health checks, when considered necessary to hand-feed cubs, or for research purposes. Animals were not anaesthetised, sedated, drug-treated, or physically restrained during milk sample collection. Cubs are handled by staff several times a day at the Chengdu facility for monitoring of health and growth, and for supplemental feeding, and were not with their mothers when milk samples were collected. While overt disease was not observed in any of the sampled individuals during the study period, minor ailments and suboptimal blood factor levels were observed in some. Mother pandas normally enter a period of anorexia for 7–10 days postpartum. However, at the Chengdu facility, they are given glucose until normal diet resumes.

Milk samples were stored either in liquid nitrogen or in a -80°C freezer immediately after collection. They were transferred frozen to Scotland, and stored in the Glasgow laboratories at or below -20°C until use.

Milk sampling from giant panda mothers and all procedures in this study were carried out under ethical approval from the College of Medical, Veterinary & Life Sciences Ethics Committee of the University of Glasgow, and by the appropriate committee of the Chengdu Research Base of Giant Panda Breeding where the animals were held. All sampling was carried out in strict accordance with relevant guidelines and regulations, and as approved by the above authorities.

Giant pandas are currently classified as “vulnerable” by the International Union for the Conservation of Nature (IUCN Red List 3.1). International transfer of milk samples from captive giant pandas in China to the laboratories in Scotland was covered by the CITES convention through permits issued by both donor and recipient countries. A permit was obtained from the Scottish Executive for the importation of the milk samples into Scotland as veterinary-checked animal products.

Chemicals and standards. High-performance Liquid Chromatography (HPLC) grade acetonitrile and isopropanol were obtained from Fisher Scientific, UK. Ammonium formate was purchased from Sigma-Aldrich, UK. HPLC-grade water was produced by a Direct-Q 3 Ultrapure Water System from Millipore, UK.

Liquid chromatography-high resolution mass spectrometry (LC-HRMS)/multiple tandem HRMS analysis and data processing.

The preparation of milk samples and the HRMS settings were described in our previous study¹⁰. Briefly, the milk samples were thawed at room temperature, and 50 μl of each were added to 200 μl of methanol/acetonitrile 1:1 (v/v). The solution was mixed and placed in an ultra-sonic bath for 20 seconds. The emulsion was centrifuged for 10 minutes at 15,000 rpm at 4°C (Eppendorf 5424 R, maximum RCF = 21,130 g). The supernatant was transferred to an HPLC vial for liquid chromatography-mass spectrometry (LC-MS) analysis. The three powdered milk formulae were prepared according to manufacturers’ instructions, and the extraction procedures were as above. In order to improve the separation of lipids, a silica gel column (ACE SIL, $150 \times 3 \text{ mm}$, $3 \mu\text{m}$, HiChrom, UK) was employed with the mobile phase A as a mixture of water and isopropanol (v/v 8:2) containing 20 mM ammonium formate, and phase B as acetonitrile and isopropanol (v/v 8:2). The liquid chromatographic gradient was programmed as follows: 90% of B from 0 to 5 min, decreasing to 70% at 9 min, 65% at 13 min, 60% at 23 min, 55% 28–30 min, and finally increased back to 90% at 31 min, which was then held until 40 min.

Peak extraction and alignment of the LC-HRMS data were carried out using MZMine 2.10 as previously¹⁰. As shown in Table S1, different adduct forms were selected for annotation of different lipid classes and then searched on accurate mass against the database downloaded from the LIPID MAPS Lipidomics Gateway, <http://www.lipidmaps.org/>. Only putatively identified signals were used for subsequent statistical analysis.

Data-dependent MSⁿ fragmentation scan was carried out with collision-induced dissociation at 35 V using a Surveyor HPLC system combined with a LTQ-Orbitrap mass spectrometer (Thermo Fisher Scientific UK) and the chromatographic conditions described above. The MS² spectra of some of the major lipids are gathered in

Supplementary Figure S4, and the interpretations are detailed in Supplementary Panel S1 and summarised in Supplementary Table S1.

Statistical analysis. SIMCA version 13.0 (Umetrics, Umeå, Sweden) was used for OPLS-DA multivariate analysis. The data were mean centred and Pareto scaled in order to generate an S-plot for visualisation of the components with significant influence in the dataset. The plots of peak areas of individual lipids versus days after birth were generated using Microcal ORIGIN software.

References

- Langer, P. The phases of maternal investment in eutherian mammals. *Zoology* **111**, 148–162, doi: 10.1016/j.zool.2007.06.007 (2008).
- Langer, P. Differences in the composition of colostrum and milk in eutherians reflect differences in immunoglobulin transfer. *Journal of Mammalogy* **90**, 332–339, doi: 10.1644/08-mamm-a-071.1 (2009).
- Baumrucker, C. R. & Bruckmaier, R. M. Colostrum: IgG(1) transcytosis mechanisms. *Journal of Mammary Gland Biology and Neoplasia* **19**, 103–117, doi: 10.1007/s10911-013-9313-5 (2014).
- Roopenian, D. C. & Akilesh, S. FcRn: the neonatal Fc receptor comes of age. *Nature Reviews Immunology* **7**, 715–725, doi: 10.1038/nri2155 (2007).
- Simister, N. E. Placental transport of immunoglobulin G. *Vaccine* **21**, 3365–3369, doi: 10.1016/s0264-410x(03)00334-7 (2003).
- Stelwagen, K., Carpenter, E., Haigh, B., Hodgkinson, A. & Wheeler, T. T. Immune components of bovine colostrum and milk. *Journal of Animal Science* **87**, 3–9, doi: 10.2527/jas.2008-1377 (2009).
- Palmer, D. J. *et al.* Human colostrum: Identification of minor proteins in the aqueous phase by proteomics. *Proteomics* **6**, 2208–2216, doi: 10.1002/pmic.200500558 (2006).
- Ramsay, M. A. & Dunbrack, R. L. Physiological constraints on life-history phenomena - the example of small bear cubs at birth. *American Naturalist* **127**, 735–743, doi: 10.1086/284522 (1986).
- Griffiths, K. *et al.* Prolonged transition time between colostrum and mature milk in a bear, the giant panda, *Ailuropoda melanoleuca*. *Royal Society Open Science* **2**, 150395, doi: 10.1098/rsos.150395 (2015).
- Zhang, T. *et al.* Changes in the milk metabolome of the giant panda (*Ailuropoda melanoleuca*) with time after birth - three phases in early lactation and progressive individual differences. *Plos One* **10**, e0143417 (2015).
- Loeffler, I. K., Montali, R. J. & Rideout, B. A. In *Giant Pandas: Biology, Veterinary Medicine and Management* (eds Wildt, D. E. *et al.*) 377–409 (Cambridge University Press, 2006).
- Atkinson, D. E., Boyd, R. D. H. & Sibley, C. P. In *Knobil and Neill's Physiology of Reproduction Vols 1 and 2, 3rd Edition* 2787–2846 (2006).
- Janssen, C. I. F. & Kiliaan, A. J. Long-chain polyunsaturated fatty acids (LCPUFA) from genesis to senescence: The influence of LCPUFA on neural development, aging, and neurodegeneration. *Progress in Lipid Research* **53**, 1–17, doi: 10.1016/j.plipres.2013.10.002 (2014).
- James, E., Meschia, G. & Battagli, F. C. A-V differences of free fatty acids and glycerol in ovine umbilical circulation. *Proceedings of the Society for Experimental Biology and Medicine* **138**, 823–828 (1971).
- Elphick, M. C. & Hull, D. Transfer of fatty-acid across the cat placenta. *Journal of Developmental Physiology* **6**, 517–525 (1984).
- Carter, A. M. Evolution of placental function in mammals: The molecular basis of gas and nutrient transfer, hormone secretion, and immune responses. *Physiological Reviews* **92**, 1543–1576, doi: 10.1152/physrev.00040.2011 (2012).
- Enders, A. C. & Carter, A. M. The evolving placenta: Convergent evolution of variations in the endotheliochorial relationship. *Placenta* **33**, 319–326, doi: 10.1016/j.placenta.2012.02.008 (2012).
- Wimsatt, W. A. Morphogenesis of fetal membranes and placenta of black bear, *Ursus americanus* (Pallas). *American Journal of Anatomy* **140**, 471–495, doi: 10.1002/aja.1001400403 (1974).
- Grzelczyk, A. & Gendaszewska-Darmach, E. Novel bioactive glycerol-based lysophospholipids: New data - New insight into their function. *Biochimie* **95**, 667–679, doi: 10.1016/j.biochi.2012.10.009 (2013).
- Arnoldussen, I. A. C. & Kiliaan, A. J. Impact of DHA on metabolic diseases from womb to tomb. *Marine Drugs* **12**, 6190–6212, doi: 10.3390/md12126190 (2014).
- Carlson, S. J., Fallon, E. M., Kalish, B. T., Gura, K. M. & Puder, M. The role of the omega-3 fatty acid DHA in the human life cycle. *Journal of Parenteral and Enteral Nutrition* **37**, 15–22, doi: 10.1177/0148607112467821 (2013).
- Ganesh, V. & Hettiarachchy, N. S. A review: Supplementation of foods with essential fatty acids - can it turn a breeze without further ado? *Critical Reviews in Food Science and Nutrition* **56**, 1417–1427, doi: 10.1080/10408398.2013.765383 (2016).
- Gharami, K., Das, M. & Das, S. Essential role of docosahexaenoic acid towards development of a smarter brain. *Neurochemistry International* **89**, 51–62, doi: 10.1016/j.neuint.2015.08.014 (2015).
- Rapoport, S. I., Ramadan, E. & Basselin, M. Docosahexaenoic acid (DHA) incorporation into the brain from plasma, as an *in vivo* biomarker of brain DHA metabolism and neurotransmission. *Prostaglandins & Other Lipid Mediators* **96**, 109–113, doi: 10.1016/j.prostaglandins.2011.06.003 (2011).
- Singh, M. Essential fatty acids, DHA and human brain. *Indian Journal of Pediatrics* **72**, 239–242, doi: 10.1007/bf02859265 (2005).
- Wysoczanski, T. *et al.* Omega-3 fatty acids and their role in central nervous system - a review. *Current Medicinal Chemistry* **23**, 816–831, doi: 10.2174/0929867323666160122114439 (2016).
- Balcar, V. J., Borg, J., Robert, J. & Mandel, P. Uptake of L-glutamate and taurine in neuro-blastoma cells with altered fatty-acid composition of membrane phospholipids. *Journal of Neurochemistry* **34**, 1678–1681, doi: 10.1111/j.1471-4159.1980.tb11260.x (1980).
- Huxtable, R. J. Taurine in the central nervous-system and the mammalian actions of taurine. *Progress in Neurobiology* **32**, 471–533, doi: 10.1016/0301-0082(89)90019-1 (1989).
- Chesney, R. W. *et al.* In *Taurine 7 Vol. 643 Advances in Experimental Medicine and Biology* (eds Azuma, J., Schaffer, S. W. & Ito, T.) 325–331 (2009).
- Hedberg, G. E. *et al.* Milk composition in free-ranging polar bears (*Ursus maritimus*) as a model for captive rearing milk formula. *Zoo Biology* **30**, 550–565, doi: 10.1002/zoo.20375 (2011).
- Hedberg, G. E., Dierenfeld, E. S. & Rogers, Q. R. Taurine and zoo felids: Considerations of dietary and biological tissue concentrations. *Zoo Biology* **26**, 517–531, doi: 10.1002/zoo.20158 (2007).
- Weiss, G. A. *et al.* High levels of anti-inflammatory and pro-resolving lipid mediators lipoxins and resolvins and declining docosahexaenoic acid levels in human milk during the first month of lactation. *Lipids in Health and Disease* **12**, doi: 10.1186/1476-511x-12-89 (2013).
- Uauy, R., Mena, P., Wegher, B., Nieto, S. & Salem, N. Long chain polyunsaturated fatty acid formation in neonates: Effect of gestational age and intrauterine growth. *Pediatric Research* **47**, 127–135, doi: 10.1203/00006450-20001000-00022 (2000).
- Desbois, A. P. & Smith, V. J. Antibacterial free fatty acids: activities, mechanisms of action and biotechnological potential. *Applied Microbiology and Biotechnology* **85**, 1629–1642, doi: 10.1007/s00253-009-2355-3 (2010).
- Bentley, J. P. *et al.* Gestational age, mode of birth and breastmilk feeding all influence acute early childhood gastroenteritis: a record-linkage cohort study. *Bmc Pediatrics* **16**, doi: 10.1186/s12887-016-0591-0 (2016).

36. Madan, J. C. *et al.* Association of Cesarean Delivery and Formula Supplementation With the Intestinal Microbiome of 6-Week-Old Infants. *Jama Pediatrics* **170**, 212–219, doi: 10.1001/jamapediatrics.2015.3732 (2016).
37. Borodzicz, S., Rudnicka, L., Mirowska-Guzel, D. & Cudnoch-Jedrzejewska, A. The role of epidermal sphingolipids in dermatologic diseases. *Lipids in Health and Disease* **15**, doi: 10.1186/s12944-016-0178-7 (2016).
38. Feingold, K. R. & Elias, P. M. Role of lipids in the formation and maintenance of the cutaneous permeability barrier. *Biochimica et Biophysica Acta-Molecular and Cell Biology of Lipids* **1841**, 280–294, doi: 10.1016/j.bbalip.2013.11.007 (2014).
39. Meckfessel, M. H. & Brandt, S. The structure, function, and importance of ceramides in skin and their use as therapeutic agents in skin-care products. *Journal of the American Academy of Dermatology* **71**, 177–184, doi: 10.1016/j.jaad.2014.01.891 (2014).
40. Rabinon, M., Gorgas, K. & Sandhoff, R. Ceramide synthesis in the epidermis. *Biochimica et Biophysica Acta-Molecular and Cell Biology of Lipids* **1841**, 422–434, doi: 10.1016/j.bbalip.2013.08.011 (2014).
41. Sahle, F. F., Gebre-Mariam, T., Dobner, B., Wohlrab, J. & Neubert, R. H. H. Skin Diseases Associated with the Depletion of Stratum Corneum Lipids and Stratum Corneum Lipid Substitution Therapy. *Skin Pharmacology and Physiology* **28**, 42–55, doi: 10.1159/000360009 (2015).
42. Kim, H.-Y., Huang, B. X. & Spector, A. A. Phosphatidylserine in the brain: Metabolism and function. *Progress in Lipid Research* **56**, 1–18, doi: 10.1016/j.plipres.2014.06.002 (2014).
43. Salem, N., Litman, B., Kim, H. Y. & Gawrisch, K. Mechanisms of action of docosahexaenoic acid in the nervous system. *Lipids* **36**, 945–959, doi: 10.1007/s11745-001-0805-6 (2001).
44. Bose, J. *et al.* The phosphatidylserine receptor has essential functions during embryogenesis but not in apoptotic cell removal. *Journal of Biology* **3**, 15–15, doi: 10.1186/jbiol10 (2004).
45. Merolli, A. & Santin, M. Role of phosphatidyl-serine in bone repair and its technological exploitation. *Molecules* **14**, 5367–5381, doi: 10.3390/molecules14125367 (2009).
46. Sela, J. *et al.* Primary mineralization at the surfaces of implants. *Critical Reviews in Oral Biology & Medicine* **11**, 423–436 (2000).
47. Makide, K., Kitamura, H., Sato, Y., Okutani, M. & Aoki, J. Emerging lysophospholipid mediators, lysophosphatidylserine, lysophosphatidylthreonine, lysophosphatidylethanolamine and lysophosphatidylglycerol. *Prostaglandins & Other Lipid Mediators* **89**, 135–139, doi: 10.1016/j.prostaglandins.2009.04.009 (2009).
48. Makide, K. *et al.* Novel lysophospholipid receptors: their structure and function. *Journal of Lipid Research* **55**, 1986–1995, doi: 10.1194/jlr.R046920 (2014).
49. Barnes, M. J. *et al.* The lysophosphatidylserine receptor GPR174 constrains regulatory T cell development and function. *Journal of Experimental Medicine* **212**, 1011–1020, doi: 10.1084/jem.20141827 (2015).
50. Frasch, S. C. & Bratton, D. L. Emerging roles for lysophosphatidylserine in resolution of inflammation. *Progress in Lipid Research* **51**, 199–207, doi: 10.1016/j.plipres.2012.03.001 (2012).
51. Frasch, S. C. *et al.* Neutrophils regulate tissue neutrophilia in inflammation via the oxidant-modified lipid lysophosphatidylserine. *Journal of Biological Chemistry* **288**, 4583–4593, doi: 10.1074/jbc.M112.438507 (2013).
52. Kamat, S. S. *et al.* Immunomodulatory lysophosphatidylserines are regulated by ABHD16A and ABHD12 interplay. *Nature Chemical Biology* **11**, 164–U116, doi: 10.1038/nchembio.1721 (2015).
53. Nishikawa, M., Kurano, M., Ikeda, H., Aoki, J. & Yatomi, Y. Lysophosphatidylserine has bilateral effects on macrophages in the pathogenesis of atherosclerosis. *Journal of Atherosclerosis and Thrombosis* **22**, 518–526 (2015).
54. van der Kleij, D. *et al.* A novel host-parasite lipid cross-talk - Schistosomal lyso-phosphatidylserine activates Toll-like receptor 2 and affects immune polarization. *Journal of Biological Chemistry* **277**, 48122–48129, doi: 10.1074/jbc.M206941200 (2002).
55. Lombardo, D. Bile salt-dependent lipase: its pathophysiological implications. *Biochimica et Biophysica Acta-Molecular and Cell Biology of Lipids* **1533**, 1–28, doi: 10.1016/s1388-1981(01)00130-5 (2001).
56. Trott, J. F. *et al.* Maternal regulation of milk composition, milk production, and pouch young development during lactation in the tammar wallaby (*Macropus eugenii*). *Biology of Reproduction* **68**, 929–936, doi: 10.1095/biolreprod.102.005934 (2003).
57. Brennan, A. J. *et al.* The tammar wallaby and fur seal: Models to examine local control of lactation. *Journal of Dairy Science* **90**, E66–E75, doi: 10.3168/jds.2006-483 (2007).
58. Zhang, Z. *et al.* Analysis of the breast milk of giant pandas (*Ailuropoda melanoleuca*) and the preparation of substitutes. *Journal of Veterinary Medical Science* **78**, 747–754, doi: 10.1292/jvms.15-0677 (2016).
59. Modepalli, V. *et al.* Differential temporal expression of milk miRNA during the lactation cycle of the marsupial tammar wallaby (*Macropus eugenii*). *BMC Genomics* **15**, 1012, doi: 10.1186/1471-2164-15-1012 (2014).
60. Pask, A. J. & Renfree, M. B. In *Marsupial Genetics and Genomics* (eds Deakin, J. E., Waters, P. D. & Graves, J. A. M.) 285–316 (Springer Verlag, 2010).
61. Breustedt, D. A., Schonfeld, D. L. & Skerra, A. Comparative ligand-binding analysis of ten human lipocalins. *Biochimica et Biophysica Acta-Proteins and Proteomics* **1764**, 161–173, doi: 10.1016/j.bbapap.2005.12.006 (2006).
62. Dartt, D. A. Tear lipocalin: structure and function. *Ocular Surface* **9**, 126–138 (2011).
63. Flower, D. R., North, A. C. T. & Sansom, C. E. The lipocalin protein family: structural and sequence overview. *Biochimica et Biophysica Acta-Protein Structure and Molecular Enzymology* **1482**, 9–24, doi: 10.1016/s0167-4838(00)00148-5 (2000).

Acknowledgements

We are grateful to the following at Chengdu Research Base of Giant Panda Breeding: Hairui Wang for supervising the collection and storage of the milk samples, Liang Zhang for administration of export arrangements and collection of veterinary records, and the Director, Professor Zhihe Zhang, for his continued support and encouragement of this project. The analytical work was funded by the University of Glasgow and the University of Strathclyde. The funding of mass spectrometry equipment at the University of Strathclyde was provided by the Scottish Life Sciences Alliance.

Author Contributions

M.W.K. originally conceived and designed the study and developed it with R.H. and I.K.L. T.Z. and R.Z. carried out the mass spectrometric analyses. T.Z., R.Z. and D.G.W. analyzed the data. M.W.K. created Figures 1, S1, S2 and S3. T.Z. carried out all of the statistical analysis and created Figures 2, 3 and S4. I.K.L. produced Table S2. M.W.K. wrote the paper along with T.Z., D.G.W. and I.K.L. All authors reviewed the paper.

Additional Information

Supplementary information accompanies this paper at <http://www.nature.com/srep>

Competing financial interests: The authors declare no competing financial interests.

How to cite this article: Zhang, T. *et al.* Changeover from signalling to energy-provisioning lipids during transition from colostrum to mature milk in the giant panda (*Ailuropoda melanoleuca*). *Sci. Rep.* **6**, 36141; doi: 10.1038/srep36141 (2016).

Publisher's note: Springer Nature remains neutral with regard to jurisdictional claims in published maps and institutional affiliations.



This work is licensed under a Creative Commons Attribution 4.0 International License. The images or other third party material in this article are included in the article's Creative Commons license, unless indicated otherwise in the credit line; if the material is not included under the Creative Commons license, users will need to obtain permission from the license holder to reproduce the material. To view a copy of this license, visit <http://creativecommons.org/licenses/by/4.0/>

© The Author(s) 2016