

# On-Orbit Assembly Using Superquadric Potential Fields

Ahmed Badawy<sup>1</sup> and Colin R. McInnes<sup>2</sup>  
*University of Strathclyde, Glasgow, G1 1XJ, UK*

The autonomous on-orbit assembly of a large space structure is presented using a method based on superquadric artificial potential fields. The final configuration of the elements which form the structure is represented as the minimum of some attractive potential field. Each element of the structure is then considered as presenting an obstacle to the others using a superquadric potential field attached to the body axes of the element. A controller is developed which ensures that the global potential field decreases monotonically during the assembly process. An error quaternion representation is used to define both the attractive and superquadric obstacle potentials allowing the final configuration of the elements to be defined through both relative position and orientation. Through the use of superquadric potentials, a wide range of geometric objects can be represented using a common formalism, while collision avoidance can make use of both translational and rotation maneuvers to reduce total maneuver cost for the assembly process.

## Nomenclature

$A$	=	repulsive potential amplitude
$A_o$	=	maximum repulsive potential amplitude
$a, b, c$	=	superquadratic shape parameters in $x_B$ , $y_B$ , and $z_B$ directions
$C_1, C_2$	=	control gains
$\mathbf{a}$	=	superquadric parameter vector $\lceil a \ b \ c \ \varepsilon_1 \ \varepsilon_2 \rceil^T$
$D$	=	relative Euclidian distance between two superquadric centers
$d$	=	distance between two superquadric objects
$F$	=	superquadric inside-outside function
$f_1$	=	superquadric scaling function in $x_B$ -direction
$f_2$	=	superquadric scaling function in $y_B$ -direction
$f_3$	=	superquadric scaling function in $z_B$ -direction
$\mathbf{I}$	=	element inertia matrix
$m$	=	total number of objects in the workspace
$n$	=	superquadric contour parameter
$\mathbf{q}$	=	error quaternion vector $\lceil q_1 \ q_2 \ q_3 \ q_4 \rceil^T$
$\bar{\mathbf{q}}$	=	part of error quaternion vector $\lceil q_1 \ q_2 \ q_3 \rceil^T$
$R$	=	orbit radius
$\mathbf{r}$	=	object position vector

---

<sup>1</sup> Graduate Student, Department of Mechanical Engineering, ahmed.badawy@strath.ac.uk

<sup>2</sup> Professor, Department of Mechanical Engineering, colin.mcinnis@strath.ac.uk

$\mathbf{r}_G$	=	goal point position vector
$\mathbf{s}(t)$	=	local (orbital) frame state vector
$\mathbf{T}$	=	control torque vector
$t$	=	time
$V$	=	global potential field
$V_{\text{att}}$	=	total attractive potential
$V_{\text{att,rot}}$	=	attractive rotational potential
$V_{\text{att,trans}}$	=	attractive translational potential
$V_{\text{obs}}$	=	obstacle potential
$v_{\text{max}}$	=	maximum controlled velocity
$\mathbf{v}$	=	velocity vector
$\mathbf{x}$	=	element state vector $[x \ y \ z \ q_1 \ q_2 \ q_3 \ q_4]^T$
$x_B, y_B, z_B$	=	Cartesian coordinates in body frame of reference
$x_I, y_I, z_I$	=	Cartesian coordinates in inertial frame of reference
$x_b, y_b, z_b$	=	Cartesian coordinates in local orbiting frame of reference
$\alpha$	=	superquadric obstacle potential shape parameter
$\beta$	=	braking length-scale
$\Phi$	=	state transition matrix
$\varepsilon_1, \varepsilon_2$	=	superquadric roundness parameters
$\rho$	=	element radius
$\sigma$	=	repulsive potential length-scale
$\Omega$	=	circular orbit angular velocity
$\omega_{\text{max}}$	=	maximum controlled angular velocity
$\boldsymbol{\omega}$	=	object angular velocity vector

## I. Introduction

Many physical systems relax their configuration to attain the lowest possible energy state. This idea has been adopted and used in motion planning algorithms for manipulators and mobile robots as the artificial potential field method.<sup>1</sup> A virtual attractive potential field representing a goal and virtual repulsive potential field representing obstacles are summed to generate a global potential field, the gradient of which in principle provides a collision-free path to the goal. The method is widely used for autonomous mobile robot path planning in fixed workspaces where both target and obstacles are stationary. Extensions to the potential field method due to obstacle and goal position motion have also been presented through the definition of a velocity dependent potential function.<sup>2</sup> Superquadric potential fields have been introduced for manipulator obstacle avoidance in order to accurately capture the precise geometric form of obstacles.<sup>3</sup> Superquadrics can be used to represent a wide range of geometric objects using the same common formalism. The potential field method has also been developed for space applications in areas such as proximity maneuvering,<sup>4</sup> large angle slew maneuvers,<sup>5</sup> formation-flying<sup>6</sup>, and autonomous and distributed motion planning for satellite swarm.<sup>7</sup> Other work has focused on the assembly of large, complex space structures using extensions of the potential field methodology. Here the adjacency matrix of the graph of the final structure is used to form a global potential field.<sup>8</sup> The structure can then be re-configured by modifying the adjacency matrix as

required. A related approach has been used for the autonomous assembly of a group of homogeneous components by defining and summing vector fields which capture sets of behaviors. The final configuration of the system is defined by the equilibrium state of the dynamical system formed by the vector fields, in a similar manner to the global minimum of an artificial potential field.<sup>9</sup>

As noted above, the artificial potential field methodology is based on the assumption of the existence of a virtual potential field which attracts maneuvering objects toward a goal, while repelling them away from both static obstacles and other maneuvering objects. There are strong analogies with physical scalar potential fields which represent the electric field from electrostatic charges. The gradient of the artificial scalar potential field forms a vector field which then defines the motion of maneuvering objects in the workspace. While the methodology is appealing due to its intuitive nature and computationally efficient implementation (controls are typically available in analytic form), there is often no guarantee that local minima are not present which may trap the maneuvering objects in some configuration other than the desired one.<sup>2</sup> This problem can be overcome by generating the potential field as a numerical solution to the Laplace equation,<sup>4</sup> or by various heuristics such as adding noise to escape from any local minima. As will be seen, superquadric obstacle representations provide potential surfaces which are largely symmetrical away from the obstacles, reducing the possibility that local minima may form. More importantly, since all maneuvering objects are in relative motion simultaneously, even if an object is caught in a temporary local minimum, it will be displaced due to the motion of other objects perturbing the potential field.

Superquadric functions provide an efficient and flexible means of representing geometric shapes, overcoming the deficiencies of other representations such as spherically symmetric Gaussian or power law functions where objects are represented as spheres of diameter equal to the maximum physical object dimension. Rather than a simple spherical form, the superquadric potential can be moulded to represent the geometric shape of an object by attaching the potential to the object body axes. In this way the obstacle potential becomes a function of both the obstacle position and its orientation, unlike previous methods that de-couple translation and rotation. Transformations with quaternion parameters are then used to define the element superquadric obstacle potentials in an inertial frame which are then summed together in addition to the attractive goal potential. The global potential field is then a function of both the position and orientation of the maneuvering objects. This allows collision avoidance by both translation and rotation, allowing more precise maneuvering than is possible using spherically symmetric potential fields and reducing maneuver cost. The methodology developed is applied to the autonomous

assembly of a set of heterogeneous components into a truss-like structure. Other applications include the formation and re-configuration of symmetric patterns of spacecraft for formation-flying applications where collision-avoidance can make use of both translation and rotation.

## II. Attractive Potential Field

The attractive potential field is a function defined with the goal position at its global minimum. A maneuvering object will then move down the gradient of the potential field towards this global minimum, and with a suitable dissipation function will come to rest. In this paper the goal configuration will be defined by both a goal position and orientation. The Euclidean distance between a maneuvering object and the goal position is used to define the translational attractive potential while error quaternions are used to define a rotational attractive potential. In order to reach the global minimum of the attractive potential field, both a final position and orientation must be achieved. In the subsequent analysis it will be assumed that continuous torques are available for attitude control and that discrete impulses are available for translational control. This is similar to the configuration of agile robot free-flyers which use control moment gyros and pulsed thrusters for actuation.

The overall attractive potential is the summation of both the translational and rotational attractive potentials. The translational attractive potential aims to null the Euclidean distance between a maneuvering object and its goal position, while the rotational attractive potential aims to bring the error quaternion to  $[0 \ 0 \ 0 \ 1]^T$ , relative to the required final orientation. The attractive potential guides each extended maneuvering object toward its goal configuration, both in position and orientation through impulsive velocity changes and continuous torque commands. The attractive potential is therefore defined as:

$$V_{att} = V_{att,trans} + V_{att,rot}$$

$$V_{att} = \frac{1}{2} |\mathbf{r} - \mathbf{r}_G|^2 + C_1 (\bar{\mathbf{q}}^T \bar{\mathbf{q}}) + \frac{1}{2} \boldsymbol{\omega}^T \mathbf{I} \boldsymbol{\omega} \quad (1)$$

Adding a translational potential to a rotational potential in a single global potential field leads to full 6 degree-of-freedom maneuvering control, as will be seen later. The controller is able to choose between translation and/or rotation to reach its goal and most importantly, with the addition of repulsive obstacle potentials will allow translation and/or rotation to be exploited for collision avoidance.<sup>10</sup>

In order to ensure a continuous approach to the goal, the required maneuvering object velocity vector may be chosen to be directed along the gradient of the potential at every point in the workspace. Therefore, the required maneuvering object velocity vector  $\mathbf{v}$  can be expressed as:<sup>11</sup>

$$\begin{aligned}\mathbf{v} &= -k \frac{\nabla V_{att}}{|\nabla V_{att}|} \text{ if } \dot{V} \geq 0 \\ &= -k \frac{\mathbf{r} - \mathbf{r}_G}{|\mathbf{r} - \mathbf{r}_G|}\end{aligned}\quad (2)$$

so that an impulse is applied if  $\dot{V} \geq 0$ , otherwise control intervention is not required if the maneuvering object is already moving towards the goal such that  $\dot{V} < 0$ . An exponential time approach is guaranteed if  $k = v_{max} (1 - e^{-\beta V_{att}})$  for some maximum translational speed  $v_{max}$  and braking parameter  $\beta$ . For maneuvering towards a single goal with no obstacles, motion planning then becomes a stability problem through the use of Lyapunov's theorem. If the dynamical system formed by the global potential field is shown to be stable the maneuvering object will reach its goal. The time derivative of the function  $V_{att}$  is expressed as:

$$\dot{V}_{att} = \mathbf{v}^T (\mathbf{r} - \mathbf{r}_G) + 2C_1 (\dot{\mathbf{q}}^T \bar{\mathbf{q}}) + \boldsymbol{\omega}^T \mathbf{I} \dot{\boldsymbol{\omega}} \quad (3)$$

However, the first derivative of the quaternion is defined as:<sup>12</sup>

$$\dot{\mathbf{q}} = \frac{1}{2} \mathbf{Q} \boldsymbol{\omega} \quad (4)$$

where  $\mathbf{Q}$  is the matrix of quaternion components and is defined in the usual manner as:

$$\mathbf{Q} = \begin{bmatrix} q_4 & q_3 & -q_2 \\ -q_3 & q_4 & q_1 \\ q_2 & -q_1 & q_4 \end{bmatrix} \quad (5)$$

Substituting for the quaternion kinematics in Eq (3) it can be seen that

$$\begin{aligned}\dot{V}_{att} &= \mathbf{v}^T (\mathbf{r} - \mathbf{r}_G) + C_1 \boldsymbol{\omega}^T \mathbf{Q}^T \bar{\mathbf{q}} + \boldsymbol{\omega}^T \mathbf{I} \dot{\boldsymbol{\omega}} \\ &= \mathbf{v}^T (\mathbf{r} - \mathbf{r}_G) + \boldsymbol{\omega}^T (C_1 \mathbf{Q}^T \bar{\mathbf{q}} + \mathbf{I} \dot{\boldsymbol{\omega}})\end{aligned}\quad (6)$$

and so we have  $\mathbf{Q}^T \bar{\mathbf{q}} = q_4 \bar{\mathbf{q}}$  such that:

$$\dot{V}_{att} = \mathbf{v}^T (\mathbf{r} - \mathbf{r}_G) + \boldsymbol{\omega}^T (C_1 q_4 \bar{\mathbf{q}} + \mathbf{I} \dot{\boldsymbol{\omega}}) \quad (7)$$

Euler's equation defines the external torque  $\mathbf{T}$  acting on the rigid body as:

$$\mathbf{T} = \mathbf{I} \dot{\boldsymbol{\omega}} + \boldsymbol{\omega} \times \mathbf{I} \boldsymbol{\omega} \quad (8)$$

Hence;

$$\dot{V}_{att} = \mathbf{v}^T (\mathbf{r} - \mathbf{r}_G) + \boldsymbol{\omega}^T (C_1 q_4 \bar{\mathbf{q}} + \mathbf{T} - \boldsymbol{\omega} \times \mathbf{I} \boldsymbol{\omega}) \quad (9)$$

A linear control torque will now be defined such that  $\mathbf{T} = -C_1 q_4 \bar{\mathbf{q}} - C_2 \boldsymbol{\omega}$  and so:

$$\dot{V}_{att} = \mathbf{v}^T (\mathbf{r} - \mathbf{r}_G) + \boldsymbol{\omega}^T (-C_2 \boldsymbol{\omega} - \boldsymbol{\omega} \times \mathbf{I} \boldsymbol{\omega}) \quad (10)$$

However, it is clear that  $\boldsymbol{\omega}^T (\boldsymbol{\omega} \times \mathbf{I} \boldsymbol{\omega}) = 0$  so that:

$$\dot{V}_{att} = \mathbf{v}^T (\mathbf{r} - \mathbf{r}_G) - C_2 \boldsymbol{\omega}^T \boldsymbol{\omega} \quad (11)$$

Using Eq. (2) it is then concluded from Eq. (11) that  $\dot{V}_{att} < 0$  is satisfied for all states except the goal position, so that the proposed attractive potential function can be considered as a Lyapunov function where:

$$\dot{V}_{att} \leq -k |\mathbf{r} - \mathbf{r}_G| - C_2 \boldsymbol{\omega}^T \boldsymbol{\omega} \leq 0 \quad (12)$$

With the definition of the attractive potential field, the addition of obstacles through the use of superquadric potential can now be considered. By attaching the superquadric potential to the object body axes, translation and rotational motion will then become strongly coupled, allowing precise maneuvering for collision avoidance

### III. Superquadric Obstacle Representation

Superquadrics are a family of complex geometric objects which include superellipsoids and superhyperboloids. The geometric object which will be used here is the superellipsoid, which may be referred to with the general term superquadric.<sup>13</sup> Superquadrics are mathematical representations of solid objects. They are a set of parametric functions that have great utility in object modeling. Their parametric characteristics enable the creation of a range of

object shapes by manipulating the so-called roundness and shape parameters. A generic superquadric function is defined in body axes as:

$$\left[ \left( \frac{x_B}{a} \right)^{\frac{2}{\varepsilon_2}} + \left( \frac{y_B}{b} \right)^{\frac{2}{\varepsilon_2}} \right]^{\frac{\varepsilon_2}{\varepsilon_1}} + \left( \frac{z_B}{c} \right)^{\frac{2}{\varepsilon_1}} = 1 \quad (13)$$

The inside-outside function  $F$  defines whether a point lies inside, on the surface or outside a superquadric surface and is given by:<sup>14</sup>

$$F(\mathbf{a}, \mathbf{x}_B) = \left[ \left( \frac{x_B}{a} \right)^{\frac{2}{\varepsilon_2}} + \left( \frac{y_B}{b} \right)^{\frac{2}{\varepsilon_2}} \right]^{\frac{\varepsilon_2}{\varepsilon_1}} + \left( \frac{z_B}{c} \right)^{\frac{2}{\varepsilon_1}} \quad (14)$$

Consider any point  $P$  with coordinates  $(x_B, y_B, z_B)$  with respect to a set of body axes attached to the superquadric. If  $F < 1$ , point  $P$  lies inside the superquadric whereas if  $F = 1$ , the point lies on the superquadric surface, and finally if  $F > 1$ , the point lies outside the superquadric. Various obstacle shapes can now be represented using the superquadric methodology by adjusting the five parameters defined in Eq. (13). For example, in order to define a spherical shape at some distance from the object edges, the shape parameters  $\varepsilon_1$ , and  $\varepsilon_2$  should approach unity. The superquadric form of particular object shapes will be defined and used later for application to the on-orbit assembly problem. As will be seen, through the appropriate choice of shape parameters the precise geometric form of objects can be captured in proximity to them, but smoothed away from the object to allow for collision avoidance with less likelihood of local minima formation.

#### A. Parallelepiped Obstacle (Cuboid)

The parallelepiped shape is common in structural assembly problems. A wide range of elements can be modeled by manipulating the superquadric parameters. Columns and plates can be modeled by fixed parameters, while triangles and trapezoids can be modeled by a variable set of parameters. Parallelepiped obstacles were first investigated by Volpe as static objects for collision avoidance during manipulator control.<sup>15</sup>

To form a parallelepiped shape the values of  $\varepsilon_1$  and  $\varepsilon_2$  are chosen to approach zero in proximity to the object to have a sharp edged parallelepiped. On the other hand, their values should approach unity far from the obstacle edges

to form a smooth ellipsoid. Figure 1 shows a superquadric model for such a cuboid element. The most general form of an implicit function for a parallelepiped object is defined as:

$$\left(\frac{x_B}{f_1(x_B, y_B, z_B)}\right)^{2n} + \left(\frac{y_B}{f_2(x_B, y_B, z_B)}\right)^{2n} + \left(\frac{z_B}{f_3(x_B, y_B, z_B)}\right)^{2n} = 1 \quad (15)$$

where the scaling functions  $f$  are used to define the required geometric form of the parallelepiped.

For example, the scaling functions for a column and a plate are constants. They can then be set to  $a$ ,  $b$ , and  $c$ , the semi major axis in  $x_B$ ,  $y_B$ , and  $z_B$  directions respectively such that:

$$\left(\frac{x_B}{a}\right)^{2n} + \left(\frac{y_B}{b}\right)^{2n} + \left(\frac{z_B}{c}\right)^{2n} = 1 \quad (16)$$

It is now possible to modify the nested level surfaces defined by Eq. (16) to form a sphere away from the object rather than an ellipsoid by adjusting the coefficients as:

$$\left(\frac{x_B}{a}\right)^{2n} + \left(\frac{b}{a}\right)^2 \left(\frac{y_B}{b}\right)^{2n} + \left(\frac{c}{a}\right)^2 \left(\frac{z_B}{c}\right)^{2n} = 1 \quad (17)$$

The inside-outside function is then expressed as:

$$F(\mathbf{a}, \mathbf{x}_B) = \left(\frac{x_B}{a}\right)^{2n} + \left(\frac{b}{a}\right)^2 \left(\frac{y_B}{b}\right)^{2n} + \left(\frac{c}{a}\right)^2 \left(\frac{z_B}{c}\right)^{2n} \quad (18)$$

Deformable superquadric surfaces are represented by introducing a new shaping parameter,  $n$ , related to each surface. This parameter replaces both  $\varepsilon_1$  and  $\varepsilon_2$  with the value of  $n \rightarrow \infty$  near the object edges (to ensure sharp edges) while  $n \rightarrow 1$  away from the object (to ensure smoothness) to form an  $n$ -ellipsoid with semi-axes  $a$ ,  $b$ , and  $c$ . Following Vople,  $n$  can be defined as:<sup>16</sup>

$$n = \frac{1}{1 - e^{-\alpha d}} \quad (19)$$

The parameter  $\alpha$  has a major influence on the potential field and the transition from sharp to smooth potential surfaces. The parameter  $\alpha$  determines both the sharpness of the object potential shape and the transition from the actual obstacle shape to a spherical shape at large distance. Increasing the value of  $\alpha$  increases the sharpness of the transition, which limits the range of influence of the object. Similarly, decreasing the value of  $\alpha$  allows for the effect



of the object shape to influence the potential field at large distances from the object. By changing its value the influence of object edges can be manipulated to overcome the formation of any local minima which may form when dealing with multiple objects. Figure 1 shows the effect of  $\alpha$  on the object iso-potential contours.

## B. Cylindrical Obstacle (Beam)

Beam elements are again widely used in structural assembly problems, especially in truss-type structures. Cylinders can be represented by a superquadric function by setting the shape parameter  $\varepsilon_1 \rightarrow 0$ , and  $\varepsilon_2 = 1$ . Figure 2a shows a superquadric model for a cylindrical element.

The objective of having spherical symmetry away from the obstacle edges will be guaranteed by deforming the superquadric shape from a cylinder to a sphere. For a spherical shape both  $\varepsilon_1$  and  $\varepsilon_2$  should be set to unity, hence the parameter  $\varepsilon_2$  will remain unchanged throughout the workspace, while the parameter  $\varepsilon_1$  should be gradually changed from zero at the beam edge to unity. It is then inversely proportional to the contour parameter  $n$ . Hence, the superquadric model can be adapted to the following form as:

$$\left[ \left( \frac{x_B}{\rho} \right)^2 + \left( \frac{y_B}{\rho} \right)^2 \right]^n + \left( \frac{c}{\rho} \right)^2 \left( \frac{z_B}{c} \right)^{2n} = 1 \quad (20)$$

for a cylinder of radius  $\rho$ . The corresponding inside-outside function is then expressed as:

$$F(\mathbf{a}, \mathbf{x}_B) = \left[ \left( \frac{x_B}{\rho} \right)^2 + \left( \frac{y_B}{\rho} \right)^2 \right]^n + \left( \frac{c}{\rho} \right)^2 \left( \frac{z_B}{c} \right)^{2n} \quad (21)$$

The beam element iso-potential contours are shown in Fig. 2. The iso-potentials in the circular cross-section plane remains unchanged, whereas those in the longitudinal plane change their shape in the same way as those of the cuboid element to provide sharp edges close to the beam and a smooth symmetric potential far from the beam.

## IV. Obstacle Potential Field

The formulation of the obstacle potential field from the individual obstacles depends on the behavior required whilst approaching an obstacle. Two types of repulsive potential fields are used: the avoidance potential field and the approach potential field, as defined by Volpe<sup>15</sup>. Each is defined over a certain distance around the obstacle. The objective of the avoidance potential is to prevent collision between the controlled object and the surrounding

obstacles. This is achieved by introducing a repulsive potential around the obstacle which is sufficient to force the controlled object to move away from the obstacle regardless of the kinetic energy of each of them. The best way to ensure this requirement is to define infinite repulsive potential in the avoidance potential region. The minimum distance between any two superquadric object surfaces, an obstacle at  $\mathbf{x}_{B,obs}$  and a maneuvering object at  $\mathbf{x}_{B,obj}$ , can be determined from the distance  $D$  between their geometric centers. This is found to be:<sup>17</sup>

$$d = D \left[ 1 - F(\mathbf{a}_{obs}, \mathbf{x}_{B,obs})^{\frac{-1}{2n}} - F(\mathbf{a}_{obj}, \mathbf{x}_{B,obj})^{\frac{-1}{2n}} \right] \quad (22)$$

The avoidance potential is then calculated through the use of the so-called Born approximation for a Yukawa potential in which the exponential term reaches zero faster than the inverse distance term as<sup>18</sup>:

$$V_{obs} = A \frac{\exp(-\alpha d)}{d}, \quad d \geq d_{min} \quad (23)$$

The objective of the approach potential is to decrease the kinetic energy of the maneuvering object when approaching the obstacle within a certain distance to reduce the approach velocity and to generate smooth contact between objects. Smooth contact is clearly required in the goal position to achieve the final contact for mechanical assembly. The approach potential function can then be expressed as:

$$V_{obs} = A \exp\left(-\alpha d^{1+\frac{1}{\alpha}}\right), \quad d < d_{min} \quad (24)$$

The repulsive potential amplitude,  $A$ , is used to define the maximum repulsive potential between objects. This amplitude should be defined depending on the maximum allowable translational velocity of the objects. The parameter  $A$  is crucial for structural assembly problems as it is expressed as a function of the configuration of the objects. Allowing the obstacle potential to vanish at the goal configuration allows smooth contact, which is again required for connection of the elements for assembly.<sup>19</sup> The repulsive amplitude may then be expressed as a smooth Gaussian function as:

$$A = A_o \left( 1 - \exp\left(-|\mathbf{r} - \mathbf{r}_G|^2 / \sigma\right) \right) \quad (25)$$

so that mechanical contact can be made as the maneuvering objects reach their goal. The global potential field required for on-orbit assembly will now be formed from the attractive goal and repulsive obstacle potential fields.

## V. Global Potential Field

The global potential is a linear superposition of the attractive and repulsive potentials, as shown in Fig. 3 for a single object. However, different potentials must be defined with respect to the same frame of reference. Although, each superquadric obstacle function is expressed in a body frame attached to the obstacle, only the distances between them are required to calculate the obstacle potential function. Object coordinates are therefore transformed from an inertial frame to a body frame through a homogeneous transformation. This operation is well established by using quaternions as:

$$\begin{bmatrix} x \\ y \\ z \end{bmatrix}_B = \begin{bmatrix} q_1^2 - q_2^2 - q_3^2 + q_4^2 & 2(q_1 q_2 + q_3 q_4) & 2(q_1 q_3 - q_2 q_4) \\ 2(q_1 q_2 - q_3 q_4) & -q_1^2 + q_2^2 - q_3^2 + q_4^2 & 2(q_2 q_3 + q_1 q_4) \\ 2(q_1 q_3 + q_2 q_4) & 2(q_2 q_3 - q_1 q_4) & -q_1^2 - q_2^2 + q_3^2 + q_4^2 \end{bmatrix} \begin{bmatrix} x_{obj} - x_{obs} \\ y_{obj} - y_{obs} \\ z_{obj} - z_{obs} \end{bmatrix}_I \quad (26)$$

The quaternion parameters in Eq. (26) are the actual quaternion parameters which orient the object, unlike those in the attractive potential which are error quaternions. Transformation between the two types of quaternions is carried out through the following equation:

$$\begin{bmatrix} q_1 \\ q_2 \\ q_3 \\ q_4 \end{bmatrix} = \begin{bmatrix} q_4 & q_3 & -q_2 & -q_1 \\ -q_3 & q_4 & q_1 & -q_2 \\ q_2 & -q_1 & q_4 & -q_3 \\ q_1 & q_2 & q_3 & q_4 \end{bmatrix}_{goal} \begin{bmatrix} q_1 \\ q_2 \\ q_3 \\ q_4 \end{bmatrix}_{error} \quad (27)$$

Substituting the local coordinates produced from Eq. (26) in conjunction with Eqs. (19) and (21) in Eq. (22), the distance between any two objects is calculated and consequently the obstacle potential is fully defined. The addition of different potential functions may result in some issues such as:

- i) Local minimum due to the interference between spherically symmetric attractive potentials and obstacle potentials produced with sharp edges.
- ii) Local minimum due to the existence of multiple obstacles close to each other.
- iii) The "goal non-reachable due to obstacle nearby" problem which exists when an obstacle is located near the goal position. Consequently the global minimum of the potential field may be shifted from the desired location.

However, all these problems were in fact found to be overcome through the use of the superquadric obstacle representation by virtue of its spherical symmetry, and the decay of the obstacle potential amplitude,  $A$ , when

approaching the goal configuration. The overall potential field of a maneuvering object  $i$  in the presence of  $m-1$  obstacles is now defined as:

For  $d_{ij} \geq d_{min}$

$$V_i = \frac{1}{2} |\mathbf{r}_i - \mathbf{r}_{G,i}|^2 + C_1 \bar{\mathbf{q}}_i^T \bar{\mathbf{q}}_i + \frac{1}{2} \boldsymbol{\omega}_i^T \mathbf{I}_i \boldsymbol{\omega}_i + \sum_{j=1, j \neq i}^m A_j \frac{e^{-\alpha d_{i,j}(\mathbf{a}, \mathbf{r}_i, \mathbf{r}_j)}}{d_{i,j}(\mathbf{a}, \mathbf{r}_i, \mathbf{r}_j)} \quad (28)$$

and for  $d_{ij} < d_{min}$

$$V_i = \frac{1}{2} |\mathbf{r}_i - \mathbf{r}_{G,i}|^2 + C_1 \bar{\mathbf{q}}_i^T \bar{\mathbf{q}}_i + \frac{1}{2} \boldsymbol{\omega}_i^T \mathbf{I}_i \boldsymbol{\omega}_i + \sum_{j=1, j \neq i}^m A_j e^{-\alpha d_{i,j}(\mathbf{a}, \mathbf{r}_i, \mathbf{r}_j)} \quad (29)$$

Therefore, the required kinematics for object  $i$  in the presence of  $m-1$  obstacles through continuous approach to the goal is provided in the same way used to determine object velocity with the absence of obstacles as discussed in section II. The required translational velocity is found to be:

$$\mathbf{v}_i = -v_{max} \left( 1 - e^{-\beta V_{att,i}} \right) \frac{(\mathbf{r}_i - \mathbf{r}_{G,i}) + \sum_{j=1, j \neq i}^m \frac{\partial V_{obs,i,j}}{\partial d_{i,j}} \nabla d_{i,j}}{|\nabla^* V_i|} \quad (30)$$

while the control torques can be determined from the quaternion kinematics as

$$\dot{\bar{\mathbf{q}}}_i = -\omega_{max} \left( 1 - e^{-\beta V_{att,i}} \right) \frac{2C_1 \bar{\mathbf{q}}_i^T \dot{\bar{\mathbf{q}}}_i + \sum_{j=1, j \neq i}^m \frac{\partial V_{obs,i,j}}{\partial d_{i,j}} \nabla^q d_{i,j}}{|\nabla^* V_i|} \quad (31)$$

$$\dot{\boldsymbol{\omega}}_i = -\mathbf{I}^{-1} (C_1 q_{i,4} \bar{\mathbf{q}}_i + C_2 \boldsymbol{\omega}_i + \boldsymbol{\omega}_i \times \mathbf{I} \boldsymbol{\omega}_i) \quad , \quad \dot{q}_{i,4} = -\bar{\mathbf{q}}_i^T \dot{\bar{\mathbf{q}}}_i / q_{i,4} \quad (32)$$

$$\mathbf{T}_i = \mathbf{I} \dot{\boldsymbol{\omega}}_i + \boldsymbol{\omega}_i \times \mathbf{I} \boldsymbol{\omega}_i \quad (33)$$

where

$$\nabla = \begin{bmatrix} \partial/\partial x & \partial/\partial y & \partial/\partial z \end{bmatrix}^T \quad (34-a)$$

$$\nabla^q = \begin{bmatrix} \partial/\partial q_1 & \partial/\partial q_2 & \partial/\partial q_3 \end{bmatrix}^T \quad (34-b)$$

$$\nabla^* = \begin{bmatrix} \partial/\partial x & \partial/\partial y & \partial/\partial z & \partial/\partial q_1 & \partial/\partial q_2 & \partial/\partial q_3 \end{bmatrix}^T \quad (34-c)$$

The following example shows the simultaneous motion of four objects: two parallelepipeds of dimensions 1 x 1 x 0.1 m and of 1 kg mass and two discs of 1 m diameter, 0.1 m thickness and 1.2 kg mass. The maximum controlled velocity is 0.01 m/sec and the maximum controlled angular velocity is 0.1 rad/sec, consequently large translational

maneuvers will be replaced by rotational maneuvers when the objects are in close proximity. The repulsive parameters are defined as  $\alpha = 1$ ,  $A_o = 4$ ,  $\sigma = 0.1$ , and  $\beta = 1$ . The control law parameters,  $C_1$  and  $C_2$ , are selected as unity. Each pair of identical objects will switch their location to demonstrate the interaction between the translational and rotational potential fields. The obstacle avoidance potential fields demonstrate how objects of different shapes can be modeled using superquadric functions. Due to the formulation of the control method, the objects choose between translation and/or rotation in order to reduce the global potential function and so reach their goals. The initial object configuration is shown in Fig. 4, while the translational maneuvers and error quaternion parameters are shown in Fig.5. Figure 6 shows the objects during the maneuver.

The interaction between translation and rotation is evident as the objects change their orientation whilst translating to their respective goals. The ability to simultaneously rotate and translate for collision avoidance is a novel aspect of the method presented here and arises from the coupling of the translational obstacle potential field to the orientation of the objects through the use of superquadric potential fields attached the object body axes.

## VI. Implementation for On-Orbit Assembly

The previous analysis has shown that the superquadric obstacle representation along with quaternion parameters for attitude representation can succeed in bringing maneuvering objects to their goals while avoiding mutual collisions by rotation and translation. Each structural element is now assumed to maneuver as a free-flyer having translational maneuvers actuated using thrusters (impulsive velocity changes), and rotational maneuvers actuated using control moment-gyros (continuous torques). On-orbit assembly will be considered in low Earth orbit (LEO) of altitude 100 km, so that the motion of the maneuvering objects is propagated using linearised orbital dynamics.

### A. Equations of Motion:

The equations of motion describing transfer of a maneuvering object from some initial point on a circular orbit towards a goal are now defined. By considering small distances between the initial position of the maneuvering objects and their goal positions, the relative motion can be described using the Clohessy-Wiltshire (CW) equations.<sup>20</sup> The state transition matrix of the CW equations will propagate the element motion between control impulses.

In this model a structural element is placed in orbit with a reference orbital angular velocity  $\mathbf{\Omega}$ , and position vector  $\mathbf{r}$ . It is required to bring this element to its goal which is placed near the origin of a local orbiting frame of reference at a position  $\mathbf{r}_G$ , as shown in Fig. 7.

The linearised equations of motion in a local orbiting frame are then found to be:

$$\dot{x}_L = -2\Omega \dot{z}_L \quad (35-a)$$

$$\ddot{y}_L = -\Omega^2 y_L \quad (35-b)$$

$$\ddot{z}_L = 3\Omega^2 z_L + 2\Omega \dot{x}_L \quad (35-c)$$

where  $\Omega = \sqrt{GM/R^3}$  is the circular orbit angular velocity. The solution to these linear differential equations describes the maneuvering element motion, with the state transition matrix  $\Phi(t)$  as:

$$\mathbf{s}(t) = \Phi(t)\mathbf{s}(0) \quad (36)$$

where  $\mathbf{s}(t) = [x_L \ y_L \ z_L \ \dot{x}_L \ \dot{y}_L \ \dot{z}_L]^T$ , and  $\mathbf{s}(0)$  is the initial conditions for the current period of free flight between impulses. The state transition matrix can then be defined as:<sup>20</sup>

$$\Phi(t) = \begin{bmatrix} 1 & 0 & 6(\sin(\Omega t) - \Omega t) & \frac{1}{\omega}(4\sin(\Omega t) - 3\Omega t) & 0 & \frac{2}{\Omega}(\cos(\Omega t) - 1) \\ 0 & \cos(\Omega t) & 0 & 0 & \frac{\sin(\Omega t)}{\Omega} & 0 \\ 0 & 0 & 4 - 3\cos(\Omega t) & \frac{2}{\Omega}(1 - \cos(\Omega t)) & 0 & \frac{\sin(\Omega t)}{\Omega} \\ 0 & 0 & 6\Omega(\cos(\Omega t) - 1) & 4\cos(\Omega t) - 3 & 0 & -2\sin(\Omega t) \\ 0 & -\Omega \sin(\Omega t) & 0 & 0 & \cos(\Omega t) & 0 \\ 0 & 0 & 3\Omega \sin(\Omega t) & 2\sin(\Omega t) & 0 & \cos(\Omega t) \end{bmatrix} \quad (37)$$

## B. On-Orbit Assembly

Many future large space structures will be unable to be launched as a single assembly. Carrying unassembled structural elements in several launch vehicles then assembling them in-orbit will be required for both large mechanical structures, such as trusses, and for large science missions using multiple spacecraft for formation-flying.

It is assumed that all the elements for the structure are initially on a circular orbit in some initial configuration. Natural orbital motion can bring the elements toward their goals or away from them, depending on their relative position and velocity. Therefore, control actuation is required when the global potential field is not monotonically decreasing and the elements maneuver towards their goal. The only limitation on the initial configuration of the elements is that they should have sufficient  $\Delta v$  to accomplish the assembly process.

The artificial potential field can control the assembly process through constructing an attractive potential field with a global minimum situated in the goal configuration of each element, while the repulsive potential field is used for collision avoidance. The potential functions, both attractive and repulsive, will be described with respect to the local, orbiting frame of reference. Control intervention will be used when the rate of change of the global potential function is larger than some non-positive value. Control actuation is then required when:

$$\dot{V}_i \geq c_f \quad (38)$$

The control trigger constant,  $c_f$ , can be set to zero for Lyapunov-like stability, however a negative value can be used in order to preempt collision avoidance maneuvers. The correct choice of the control constant results in minimizing the required thruster activity and so minimizing the propellant mass used for the assembly process.

### C. On-Orbit Assembly Example

The initial velocities of all the elements to be assembled are set to zero relative to the goal position, hence the initial rate of change of the potential is zero. As a result, control actuation will be required if  $c_f < 0$  and so the assembly process will start. The rate of change of the global potential is found and the control actuation is made according to Eq. (38).

This example considers the assembly process of 14 beams of 0.1 m diameter, 1 m length, and mass of 20 kg and plates of dimensions 1.2 x 1.2 x 0.3 m and mass of 75 kg, and of dimension 2.2 x 1.2 x 0.5 m and mass of 230 kg. All objects move under both natural orbital motion and control action with a maximum controlled velocity of 0.1 m/sec and a maximum controlled angular velocity of 0.1 rad/sec. The repulsive parameters are defined as  $\alpha = 7$ ,  $A_0 = 6$ ,  $\sigma = 0.1$ , and  $\beta = 1$ . The control law parameters,  $C_1$  and  $C_2$ , are selected as unity. The initial configuration of the objects is shown in Fig. 8, while the object trajectories and error quaternion parameters are shown in Fig. 9. The maneuvering object angular velocities are shown in Fig. 10, while Fig. 11 shows the object configuration during the assembly process, as well as part of their trajectories to illustrate the objects paths. The final assembled truss-like structure is shown in Fig. 12. The structure requires approximately 150 s to complete the assembly using a maximum controlled velocity of 0.1 m s<sup>-1</sup>. The control trigger constant  $c_f$  was set to zero, since this is the most difficult case chosen to demonstrate the utility of the method.

#### **D. Cost of Assembly**

The assembly cost is measured by the overall  $\Delta v$  summed from every control action. It is affected by the presence of the obstacle potential of other objects so that a variation in cost for different elements is expected. Cost optimization could be achieved through the optimal choice of parameters such as the maximum controlled velocity and control trigger  $c_f$  defined in Eq. (38), since this represents the threshold at which the controller will act. Figure 13 shows the absolute  $\Delta v$  for each element, where an initial  $\Delta v$  of  $0.1 \text{ m s}^{-1}$  is delivered to initiate the assembly process by maneuvering the objects towards the goal. Small impulses are required at the end of each object trajectory to help in the precise coordination between objects to avoid collision and to reach their goals. The maneuvering object translation costs are shown in Table 1 and are seen to be relatively modest.

Again, the key benefit of the method presented relative to other approaches is the ability to capture the geometric form of maneuvering objects, unlike spherically symmetric potentials<sup>8</sup> and the ability to perform coupled translational and rotational maneuvers for collision avoidance. This is more flexible than other approaches to distributed motion planning.<sup>7</sup>

#### **E. Free-Flying Robots**

In order to demonstrate the flexibility of the methodology presented, two free-flying robots, of dimension  $0.1 \times 0.1 \times 0.1 \text{ m}$  and mass of  $0.5 \text{ kg}$ , are considered maneuvering in proximity to the structure. The free-flyers are controlled using the same control parameters as the structural elements. Each free-flyer is affected by the repulsive potentials of the 16 elements constituting the structure, in addition to the other free-flyer. Figure 15 shows the proximity motion of the two free-flyers, R1 and R2 who maneuver past each other. Their close maneuvering inside the structure again demonstrates the flexibility of the method.

#### **F. Structure Reconfiguration**

In this example, a hexagonal structure is assembled from 6 beams. All beams are again considered as extended rigid bodies rather than point masses, as used in previous studies.<sup>9</sup> The beam type objects have length  $1 \text{ m}$ , diameter  $0.1 \text{ m}$  and a mass of  $20 \text{ kg}$ , and are initially in a parking position with  $1 \text{ m}$  separation distance, Fig. 16. The beams are then tasked to perform an extremely complex maneuver to form a closed hexagonal formation without collision. Later, the objects are disassembled and are then tasked to form a new line configuration, again without



collision. All control constants are unity, the maximum controlled velocity is  $0.02 \text{ m sec}^{-1}$ , while the repulsive parameters are defined as  $\alpha = 6$ ,  $A_0 = 50$ ,  $\sigma = 0.1$ , and  $\beta = 1$ .

During the 400 sec of the first task, strongly coupled translation and rotation maneuvers are performed to from the initial goal configuration shown in Fig. 17. The total translation costs are shown in Table 2. As the objects are disengaged, they are repelled due to their mutual repulsive potentials, while later each maneuvers towards its new configuration. Using the same parameters as in the first phase, the objects are able to reach their new goals and are assembled together in a line without collision in 200 sec, Fig. 18. The middle objects such as (1) and (4) require larger impulses and consequently total maneuver cost since they experience a more complex potential field topology compared with those on the two ends as shown in Table 3.

## VII. Conclusion

On-orbit assembly using superquadric potential fields has been presented. The obstacle superquadric potential field has been attached to each obstacle body axes so that the global potential is a function of both position and orientation. Interaction between the translational and rotational attractive potential along with that of the obstacles results in flexibility for the algorithm to choose which behavior, rotation and/or translation, is effective in driving the assembly process. Various object shapes were used within the algorithm, represented using the superquadric functions. The obstacle repulsion amplitude was scaled to maintain constant repulsive amplitude for all locations away from the goal, while decreasing the amplitude close to the goal to allow mechanical contact for assembly. Simulation shows that complex assembly processes can be undertaken, again with simultaneous rotation and translation used for collision avoidance between the maneuvering objects. The controls are available in closed, analytic form allowing computationally efficient, on-board implementation.

## References

<sup>1</sup>Khatib O., "Real-Time Obstacle Avoidance for Manipulators and Mobile Robots", The International Journal of Robotics Research, Vol. 5, No. 1, 1986, pp. 90-98.

<sup>2</sup>Ge S.S., and Cui Y.I., "Dynamic Motion Planning for Mobile Robots using Potential Field Method", Autonomous Robots Vol. 13, No. 3, 2002, pp. 207-222.

<sup>3</sup>Khosla P. and Volpe R., "Superquadric Artificial Potentials for obstacle Avoidance and Approach", IEEE Conference on Robotics and Automation, Philadelphia, April, 1998.

<sup>4</sup> Roger, A.B., and McInnes, C.R., "Passive-Safety Constrained Free-Flyer Path-Planning with Laplace Potential Guidance at the International Space Station", *Journal of Guidance, Control and Dynamics*, Vol. 23, No. 6, 2000, pp. 971-979.

<sup>5</sup> McInnes C.R., "Potential Function Methods for Autonomous Spacecraft Guidance and Control", AAS 95-447, AAS/AIAA Astrodynamics Specialist Conference, Halifax, Canada, August, 1995.

<sup>6</sup>McQuade, F., Ward, R., Ortix, F., and McInnes, C.R., "The Autonomous Configuration of Satellite Formations using Generic Potential Functions", 3<sup>rd</sup> International Workshop on Satellite Constellations and Formation-Flying, Italy, February, 2003.

<sup>7</sup>Izzo D., Pettazzi L., and Ayre M., "Mission Concept for Autonomous on Orbit Assembly of a Large Reflector in Space", IAC-05-D1.4.03, 56<sup>th</sup> International Astronautical Congress, Fukoka, Japan, September, 2005.

<sup>8</sup>McQuade, F., and McInnes, C.R., "Autonomous Control for On-Orbit Assembly using Potential Function Methods", *The Aeronautical Journal*, Vol. 101, No. 1008, 1997, pp. 255-262.

<sup>9</sup>Izzo D., and Pettazi L., "Autonomous and Distributed Motion Planning for Satellite Swarm", *Journal of Guidance, Control, and Dynamics*, Vol. 30, No. 2, 2007, pp. 449-459.

<sup>10</sup>Badawy A., and McInnes C.R., "Autonomous Structure Assembly Using Potential Field Functions", IAC-06-C1.P.3.04, 57<sup>th</sup> International Astronautical Congress, Valencia, Spain, October, 2006.

<sup>11</sup>Casasco M. and Radice G., "Autonomous Slew Maneuvering and Attitude Control using the Potential Function Method", AAS 03-612, AAS/AIAA Astrodynamics Conference, Big Sky, August, 2003.

<sup>12</sup>Wie B., *Space Vehicle Dynamics and Control*, AIAA Education Series, pp. 307-322, 1998.

<sup>13</sup>Barr A., "Superquadrics and Angle-Preserving Transformations", *IEEE Computer Graphics and Applications*, Vol. 1, No. 1, pp. 11-23, 1981

<sup>14</sup>Solina F. and Bajcsy R., "Recovery of Parametric Models from Range Images: The Case for Superquadrics with Global Deformations", *IEEE Transaction on Pattern Analysis and Machine Intelligence*, Vol. 12, No. 2, 1990, pp. 131-147.

<sup>15</sup>Volpe R. and Khosla P., " Manipulator Control with Superquadric Artificial Potential Functions: Theory and Experiments", *IEEE Transaction on Systems, Man, and Cybernetics*, Vol. 20, No. 6, 1990 pp. 1423-1436.

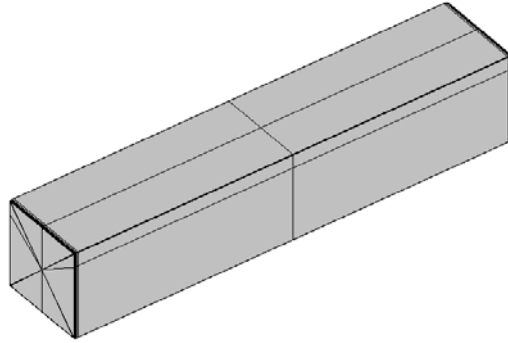
<sup>16</sup>Volpe R., "Real and Artificial Forces in the Control of Manipulators: Theory and Experiments" Ph. D Dissertation, Carnegie Mellon University, 1990.

<sup>17</sup>Badawy A., and McInnes C.R., "Separation Distance for Robot Motion Control using Superquadric Obstacle Potentials", *International Control Conference*, Glasgow, UK, September, 2006, paper no. 25.

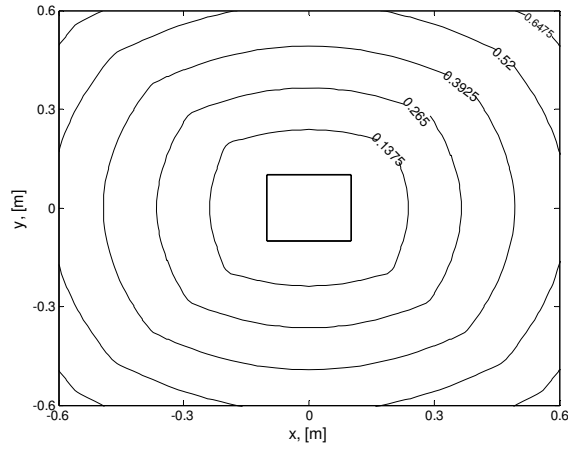
<sup>18</sup>Cohen C., Diu B., and Laloë F., *Quantum Mechanics*, Vol. 2. John Wiley and Sons, New York, 1977, pp. 957-958.

<sup>19</sup>McQuade F., "Autonomous Control for On-Orbit Assembly Using Artificial Potential Functions", Ph. D Dissertation, University of Glasgow, 1997.

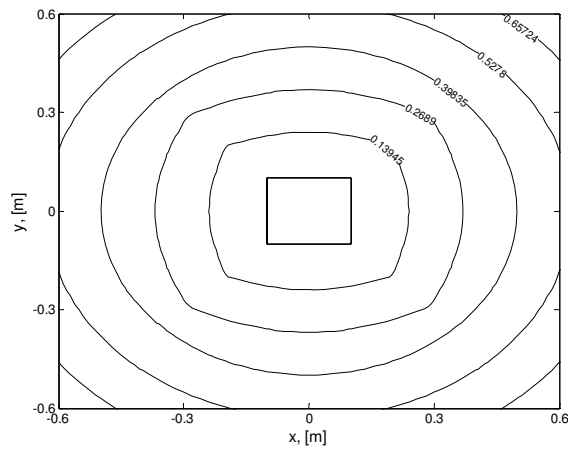
<sup>20</sup>Yu S., "On the Dynamics and Control of the Relative Motion between Two Spacecraft", *Acta Astronautica*, Vol. 35, No. 6, 1995, pp. 403-409.



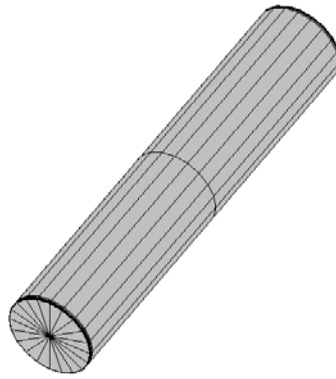
**Fig. 1-a) Cuboid element representation using a superquadric function**



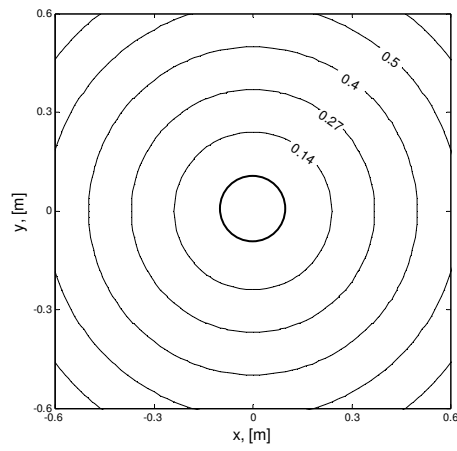
**Fig. 1-b) Cuboid element obstacle iso-potential contours near the obstacle ( $\alpha = 1$ )**



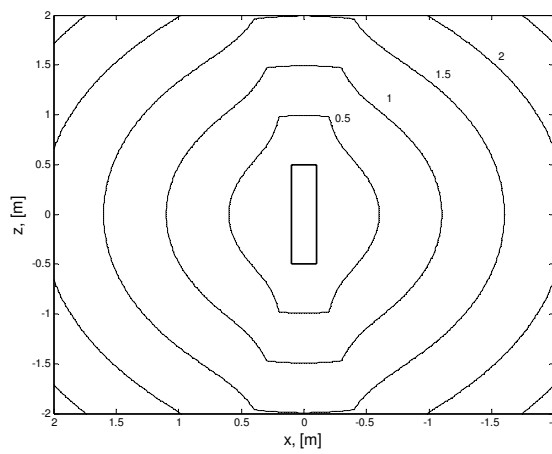
**Fig. 1-c) Cuboid element obstacle iso-potential contours near the obstacle ( $\alpha = 100$ )**



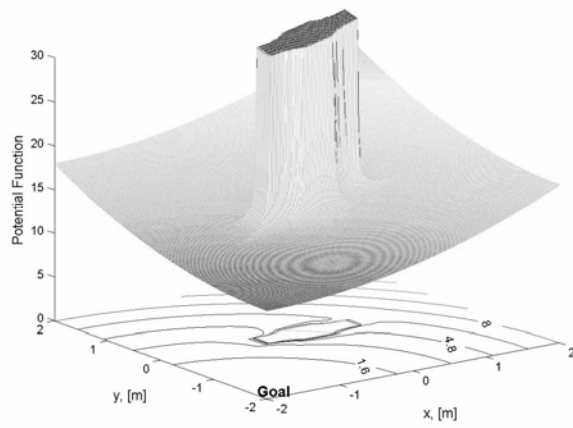
**Fig. 2-a) Cylindrical element representation using a superquadric function**



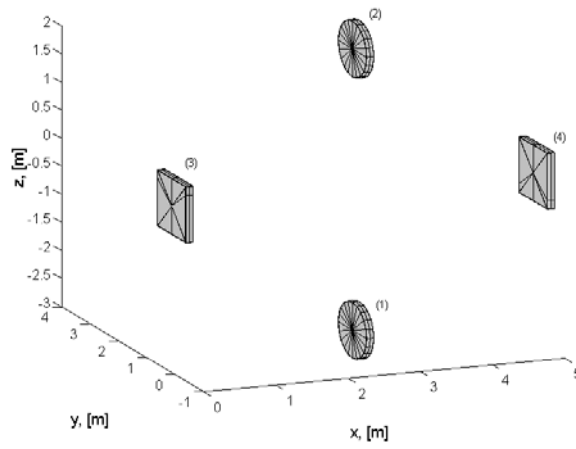
**Fig. 2-b) Beam element obstacle iso-potential contours in circular cross section plane ( $\alpha = 5$ )**



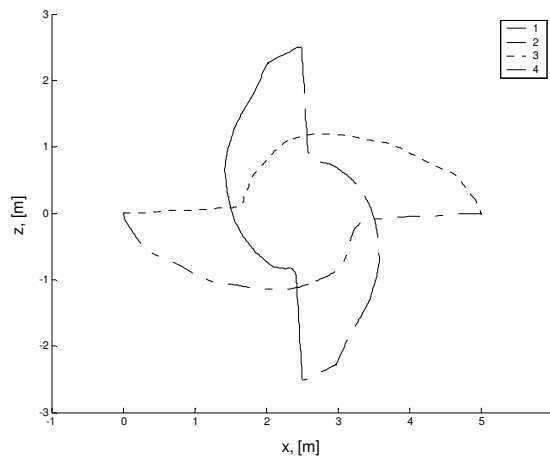
**Fig. 2-c) beam element obstacle iso-potential contours in longitudinal plane ( $\alpha = 5$ )**



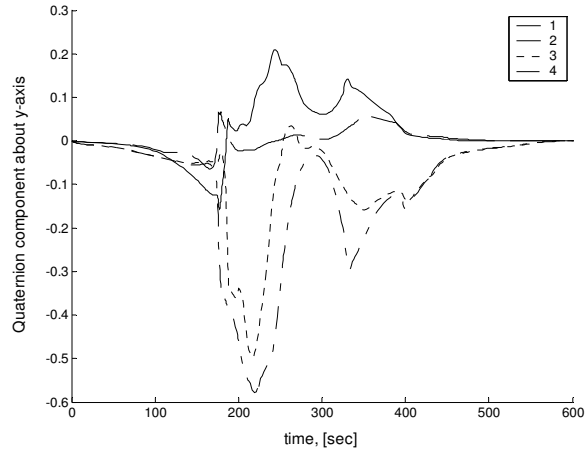
**Fig. 3 Global potential function with a single rectangular obstacle**



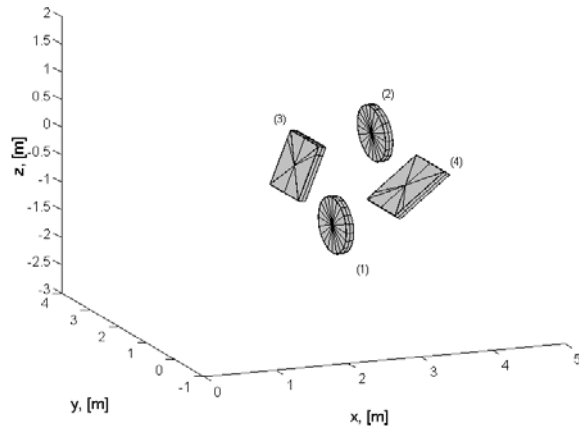
**Fig. 4 Initial object configuration**



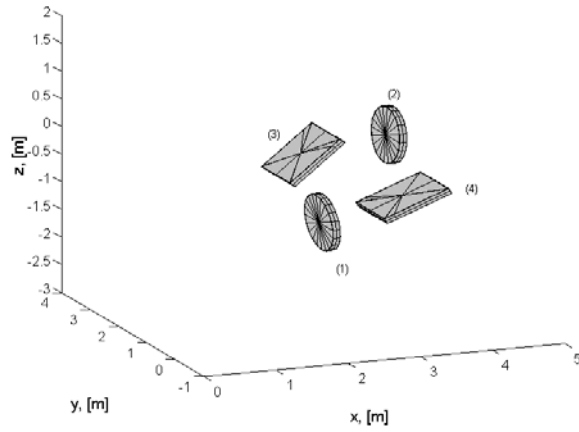
**Fig. 5-a) Translational maneuvers**



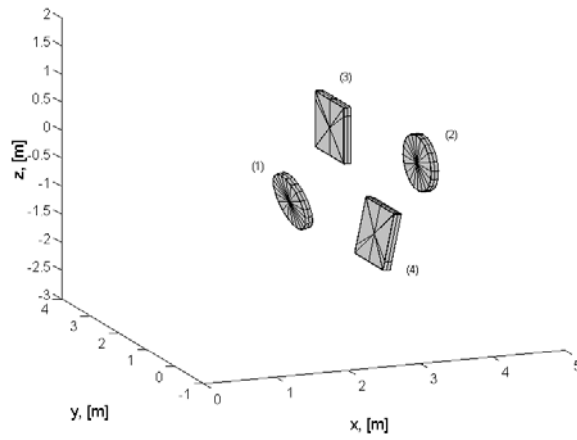
**Fig. 5-b) Quaternion parameters**



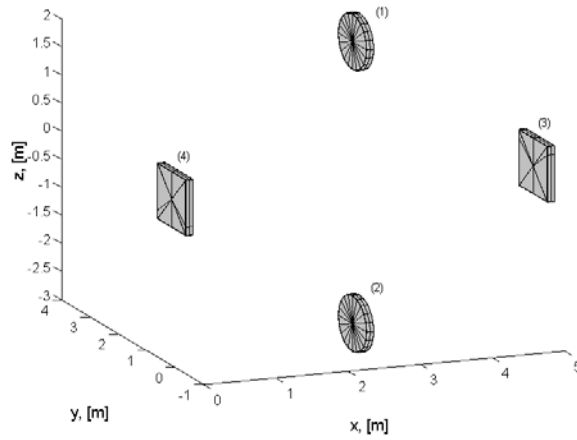
**Fig. 6-a) Object configuration at t = 185 [sec]**



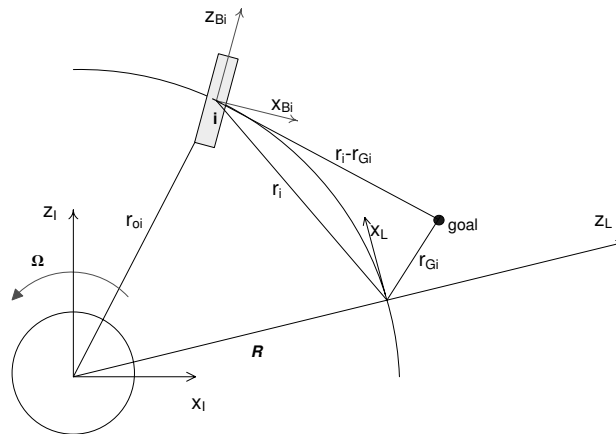
**Fig. 6-b) Object configuration at t = 206 [sec]**



**Fig. 6-c) Object configuration at  $t = 272$  [sec]**

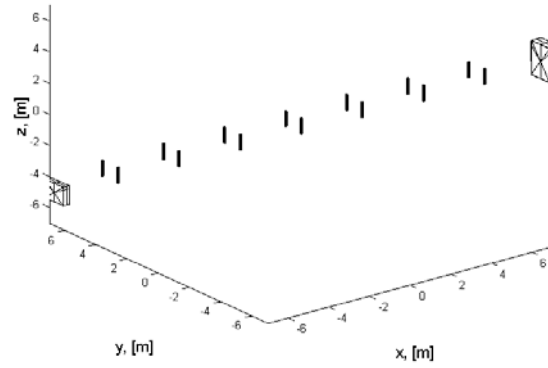


**Fig. 6-d) Final object configuration at  $t = 1000$  [sec]**

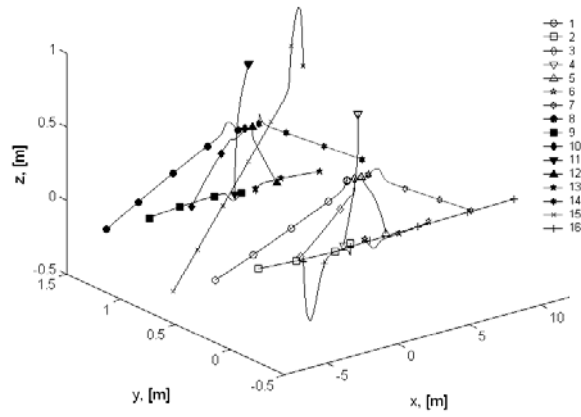


**Fig. 7 Inertial, local orbiting and body frames for the  $i^{\text{th}}$  maneuvering object**

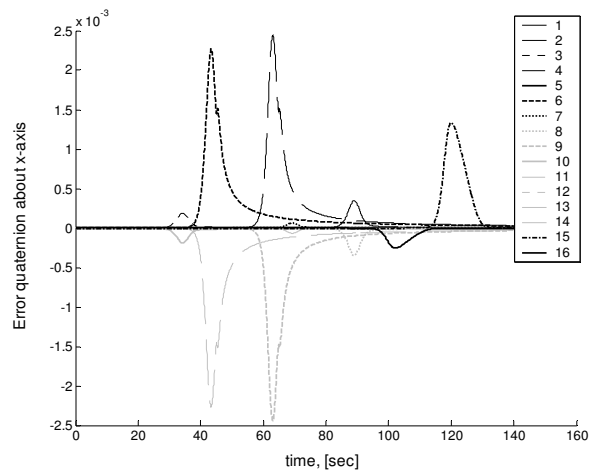




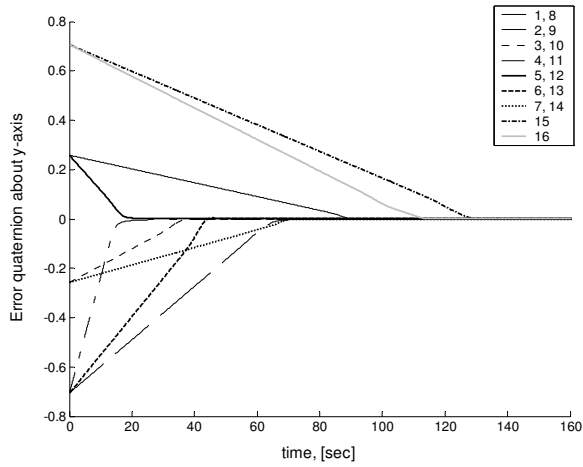
**Fig. 8 Initial configuration**



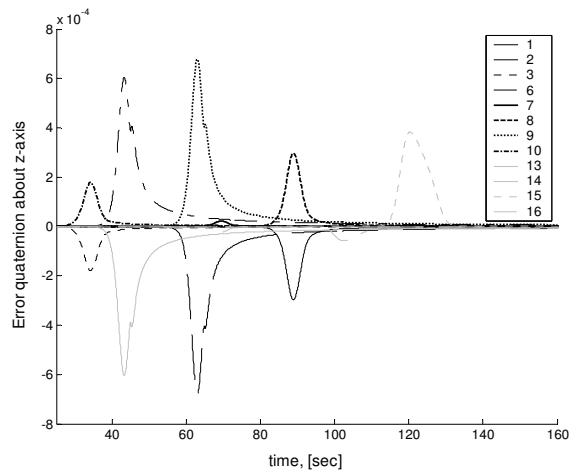
**Fig. 9-a) Object trajectories**



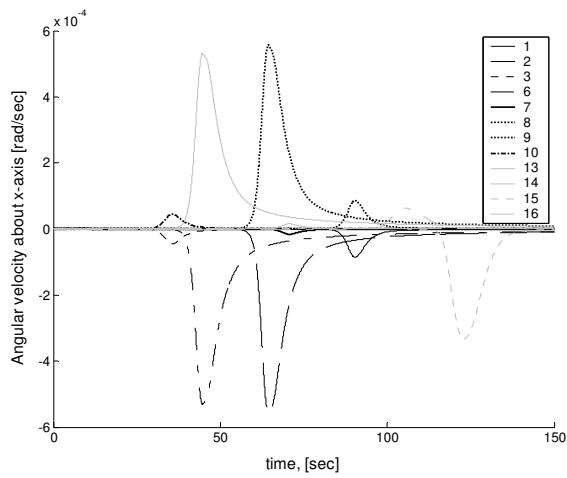
**Fig. 9-b) Error quaternion about x-axis**



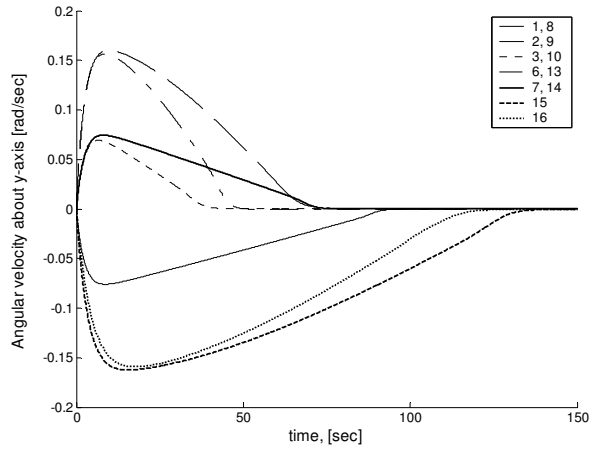
**Fig. 9-c) Error quaternion about y-axis**



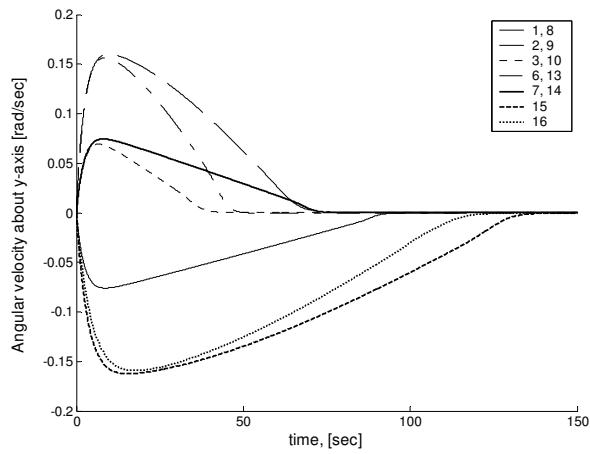
**Fig. 9-d) Error quaternion about z-axis**



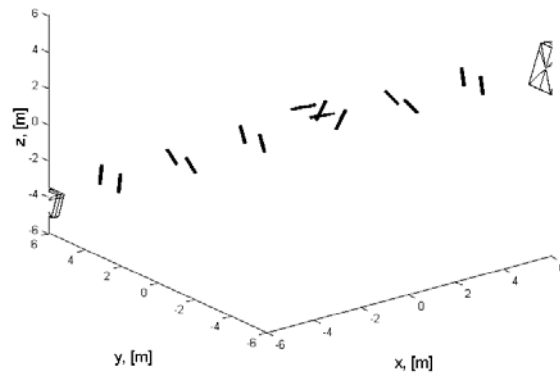
**Fig. 10-a) Angular velocities about x-axis**



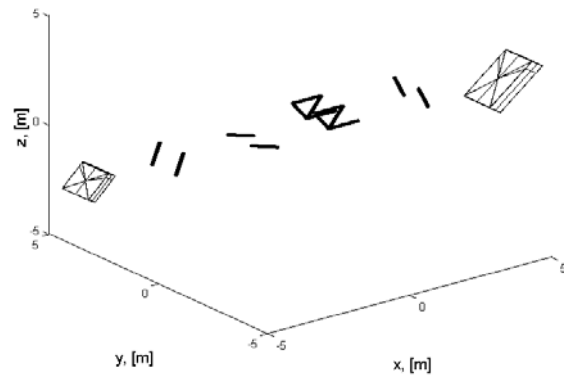
**Fig. 10-b) Angular velocities about y-axis**



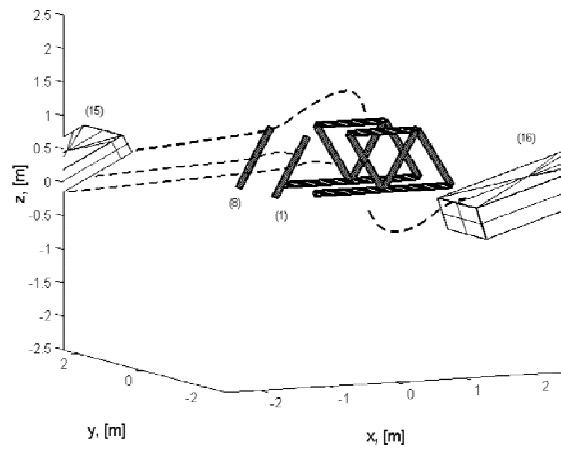
**Fig. 10-c) Angular velocities about z-axis**



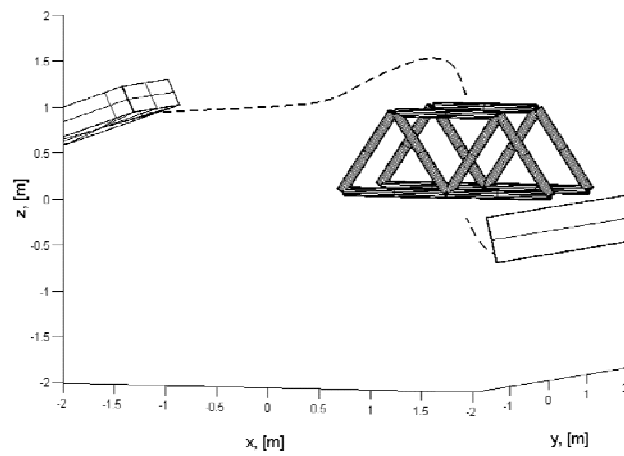
**Fig. 11-a) Object configuration at  $t = 14$  [sec]**



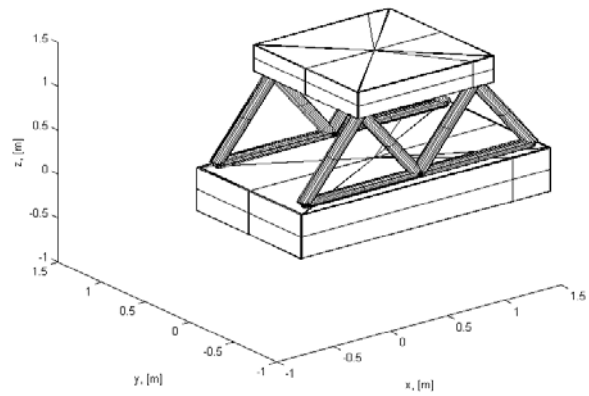
**Fig. 11-b) Object configuration at  $t = 47$  [sec]**



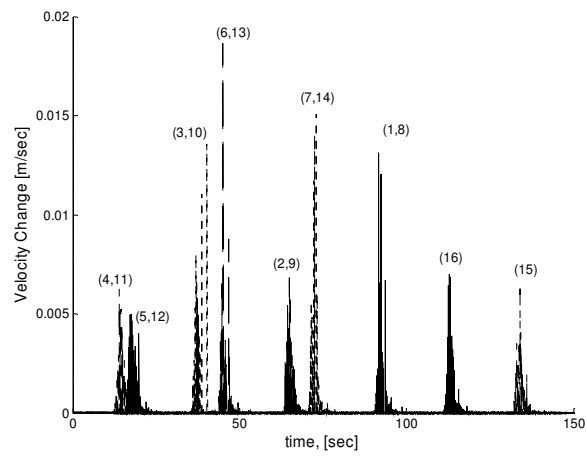
**Fig. 11-c) Object configuration at  $t = 86$  [sec]**



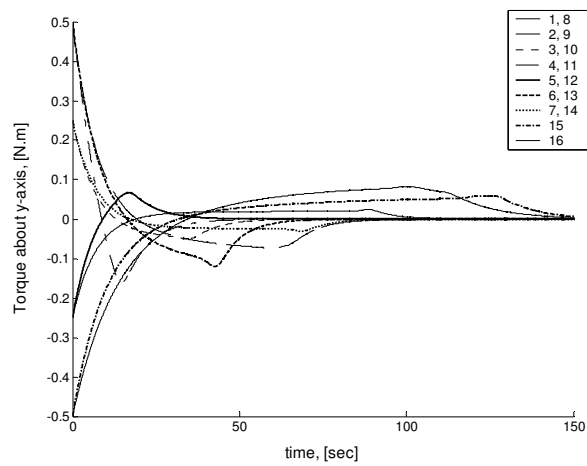
**Fig. 11-d) Object configuration at  $t = 95$  [sec]**



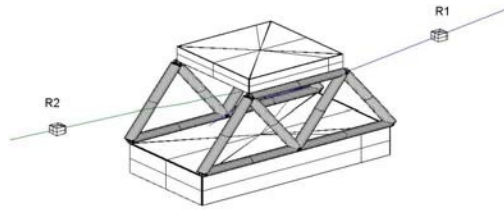
**Fig. 12 Assembled structure at t = 150 [sec]**



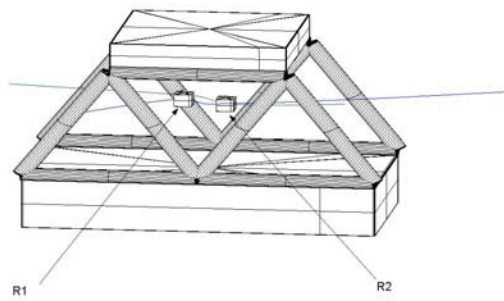
**Fig. 13 Translation cost**



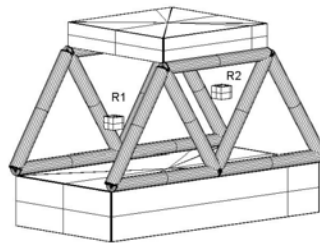
**Fig. 14 Element torques about y-axis**



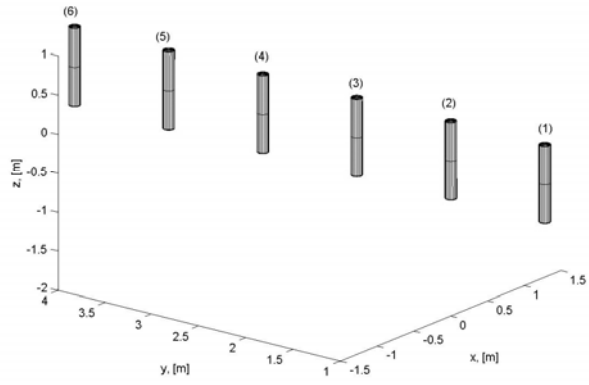
**Fig. 15-a) Two servicing robots approaching the structure**



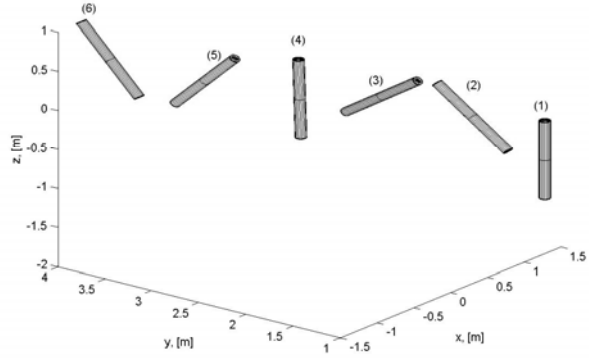
**Fig. 15-b) Two servicing robots exchange their positions**



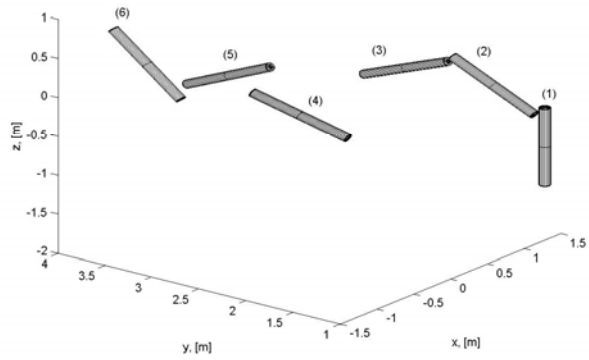
**Fig. 15-c) Two servicing robots in their final configuration**



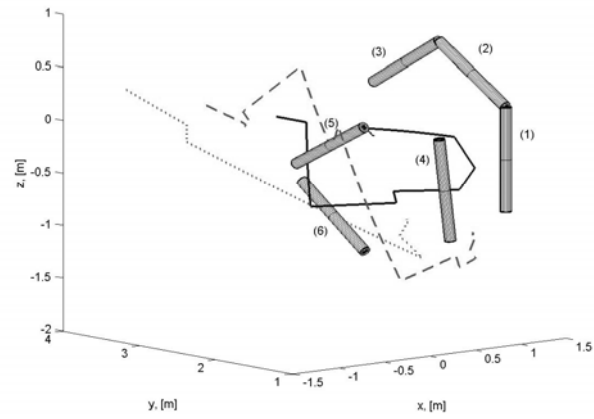
**Fig. 16 Initial object configuration**



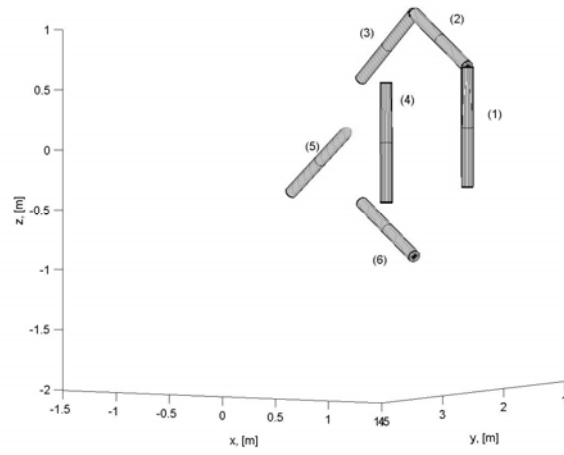
**Fig. 17-a) Object configuration ( $t = 20$  sec)**



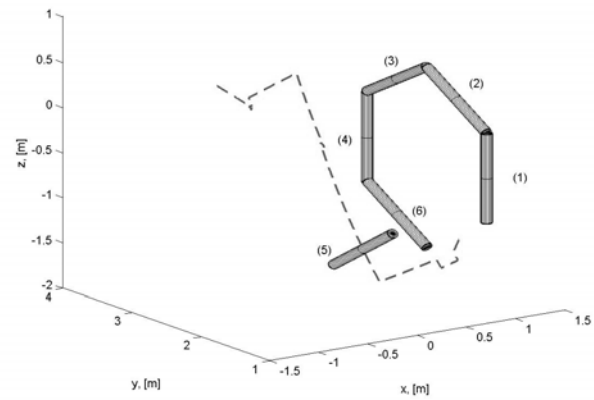
**Fig. 17-b) Object configuration ( $t = 40$  sec)**



**Fig. 17-c) Object configuration (t = 145 sec)**

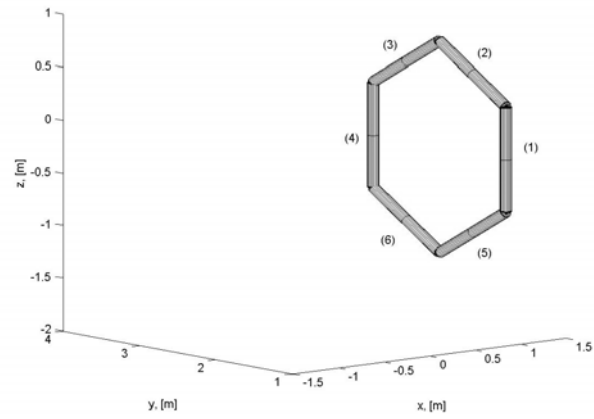


**Fig. 17-d) Object configuration (t = 230 sec)**

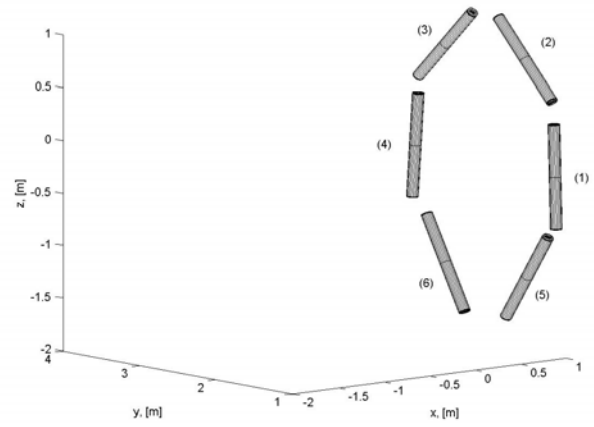


**Fig. 17-e) Object configuration (t = 260 sec)**

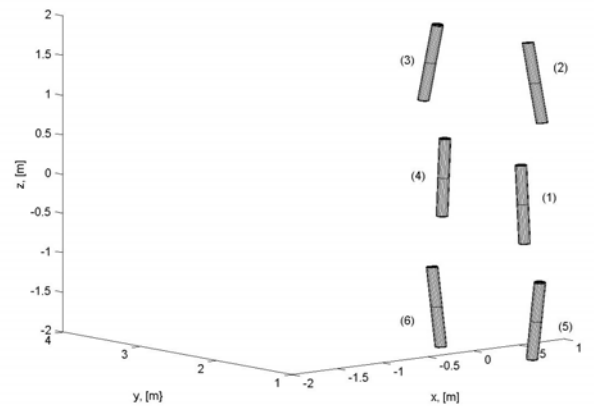




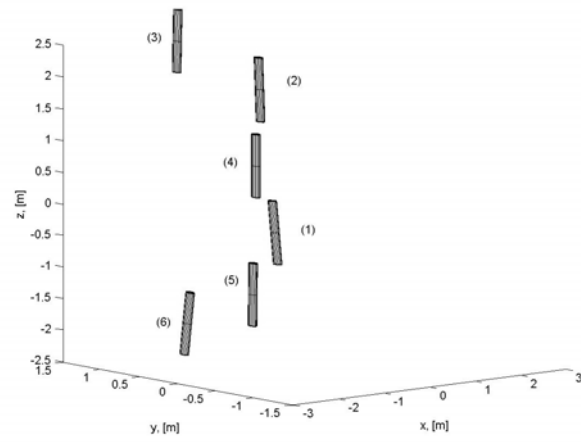
**Fig. 17-f) Final configuration (t = 400 sec)**



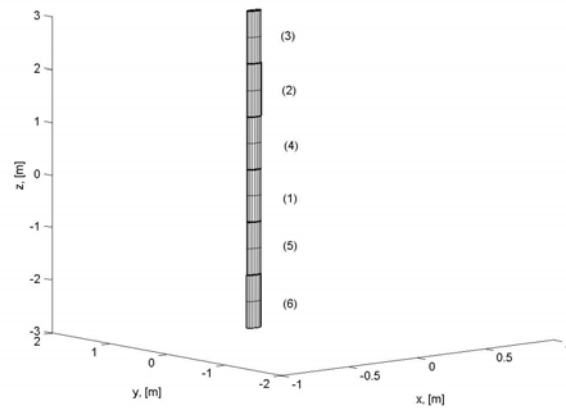
**Fig. 18-a) Object configuration (t = 15 sec)**



**Fig. 18-b) Object configuration (t = 42 sec)**



**Fig. 18-c) Object configuration ( $t = 77$  sec)**



**Fig. 18-d) Object configuration ( $t = 200$  sec)**

**Table 1 Element translation cost**

element no.	$\Delta v$ [m/sec]	element no.	$\Delta v$ [m/sec]	element no.	$\Delta v$ [m/sec]	element no.	$\Delta v$ [m/sec]
1	0.20064	2	0.20019	3	0.20055	4	0.17703
5	0.19876	6	0.20114	7	0.20151	8	0.20065
9	0.2002	10	0.20057	11	0.17705	12	0.19878
13	0.20116	14	0.20151	15	0.20045	16	0.19999

**Table 2 Reconfiguration first phase total translation cost**

element no.	$\Delta v$ [m/sec]	element no.	$\Delta v$ [m/sec]	element no.	$\Delta v$ [m/sec]
1	0	2	0.035289	3	0.1118
4	0.20255	5	0.42914	6	0.1025

**Table 3 Reconfiguration second phase total translation cost**

element no.	$\Delta v$ [m/sec]	element no.	$\Delta v$ [m/sec]	element no.	$\Delta v$ [m/sec]
1	0.26279	2	0.070863	3	0.060064
4	0.2029	5	0.062735	6	0.060405