

Evolution of directional hearing in moths via conversion of bat detection devices to asymmetric pressure gradient receivers

Andrew Reid^{a,1}, Thibaut Marin-Cudraz^{b,2}, James F.C. Windmill^a, Michael D. Greenfield^{b,1}

^a University of Strathclyde, Centre for Ultrasonic Engineering, Department of Electronic & Electrical Engineering, Glasgow G1 1XW, Scotland ^b Institut de recherche sur la biologie de l'insecte (IRBI), CNRS UMR 7261, Université François Rabelais de Tours, 37200 Tours, France

Submitted to Proceedings of the National Academy of Sciences of the United States of America

Small animals typically localize sound sources by means of complex internal connections and baffles that effectively increase time or intensity differences between the 2 ears. But some miniature acoustic species achieve directional hearing without such devices, indicating that other mechanisms have evolved. Using 3D laser vibrometry to measure tympanum deflection, we show that female lesser waxmoths (*Achroia grisella*) can orient toward the 100-kHz male song because each ear functions independently as an asymmetric pressure gradient receiver that responds sharply to high-frequency sound arriving from an azimuth angle 30° contralateral to the animal's midline. We found that females presented with a song stimulus while running on a locomotion compensation sphere follow a trajectory 20° - 40° to the left or right of the stimulus heading but not directly toward it, movement consistent with the tympanum deflections and suggestive of a monaural mechanism of auditory tracking. Moreover, females losing their track typically regain it by auditory scanning – sudden, wide deviations in their heading – and females initially facing away from the stimulus quickly change their general heading toward it, orientation indicating superior ability to resolve the front-rear ambiguity in source location. X-ray CT scans of the moths did not reveal any internal coupling between the 2 ears, confirming for the first time that an acoustic insect can localize a sound source based solely on the distinct features of each ear.

acoustic communication | Lepidoptera | sound localization | ultrasound

Introduction

The localization of sound sources by small animals is a fundamental problem in bioacoustics (1). Where body size is diminutive and inter-ear distance is short, as is generally the case in acoustic insects and anurans, it is improbable that an animal can rely on inter-aural intensity difference (IID) or inter-aural time difference (ITD) mechanisms to resolve the azimuth angle towards the source (2). Some acoustic insects and anurans overcome their size constraints by means of multiple pathways along which sound arrives at both the external and internal surfaces of the tympanal membranes (3,4): because the separate pathways leading to the 2 surfaces of a tympanal membrane differ in length when the sound source is ipsilateral, a phase difference between the external and internal sound waves can arise for specific sound frequencies and yield vibration of the membrane. The inter-aural phase difference (IPD) between these external-internal phase differences, by generating a disparity in vibration between the 2 ears, may then serve as a reliable indicator of the azimuth angle toward the sound source. Curiously, certain small acoustic insects that do not possess the anatomical features permitting an IPD mechanism are nonetheless quite efficient at sound source localization. For example, in the tachinid fly *Ormia ochracea*, a parasitoid of singing male crickets, the 2 ears are separated by 500 μm and sound waves arrive only at the external surfaces of the tympanal membranes, but a specialized 'rocker-arm' apparatus connecting

the ears magnifies both the IID and ITD (5). These enhanced inter-aural differences, combined with pooling the responses of many individual receptor neurons, allow female *O. ochracea* to localize their hosts with a high degree of directional precision. Given the diversity of hearing organs that have evolved among insects (6,7), it is likely that yet other localization mechanisms exist. Thus, examining directional hearing in small acoustic species would be valuable in an evolutionary context, as well as in the development of bio-inspired technology for sound localization.

Whereas the majority of research on acoustic insects has focused on conspicuous singers among the Orthoptera and Cicadidae (8), and more recently on *Drosophila* spp. (9) owing to available genetic resources, most acoustic insects are to be found in the Lepidoptera. Approximately 55% of lepidopteran species have tympanal ears (10), hearing evolved independently between 10-12 times in the order (11), and sound signaling – using ultrasound frequencies – for mating communication is now known to occur in diverse species in several families, including those characterized by small body size (12). Because mates may need to be localized with the same precision as hosts, some degree of directional hearing is expected in moth species that communicate acoustically. Moreover, the apparent absence of inter-aural bridges and of tracheal anatomy conducive to IPD mechanisms in moths (13) strongly suggests that novel strategies for sound source localization operate in lepidopteran hearing.

Among acoustic Lepidoptera, the lesser waxmoth (*Achroia grisella*; Pyralidae: Galleriinae) was an ideal candidate for study-

Significance

In most acoustic animals directional hearing evolved alongside basic ear structure. Pyraloid moths differ because their ears generally function as simple bat detectors with little directional ability. Pyraloids that broadcast mating calls represent a yet more special case, as these species do localize sound but the ability evolved well after hearing and may be constrained by fundamental auditory features. Analyzing a species with male calling songs, we report a novel localization mechanism wherein the membrane structure of each ear affords sharp sensitivity to sound arriving from a distinct angle. Females can thereby track male calls but only via an indirect, curvilinear trajectory. Such inefficiency may characterize specialized perceptual traits that rely on general ones having already undergone extensive prior evolution.

Reserved for Publication Footnotes

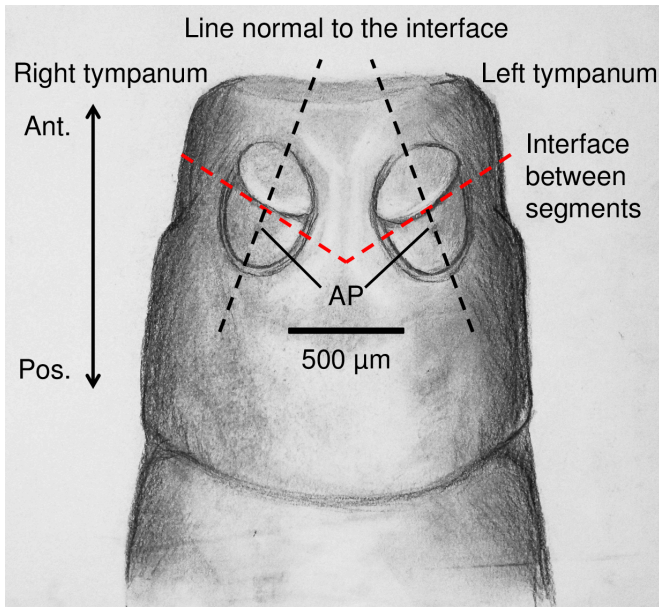


Fig. 1. Schematic diagram of ventral side of the first abdominal segment of *A. grisella* showing the general shape and position of the 2 tympana. Each tympanum is divided into a relatively thick anterior segment, the conjunctivum or counter-tympanum (55,56), and a membranous posterior segment where the peripheral neurons, collectively forming the scoloparium, are attached (AP). The interface between the segments is highlighted by a dashed red line, and the line passing through the attachment point and that is normal to the inter-segmental interface is shown. The average distance between the left and right attachment points in a female is approx. 600 μm , which would yield an interaural time difference (ITD) less than 1.75 μs for sound arriving from a lateral source. We estimated interaural intensity difference (IID) between the 2 tympana using the calculations for scattering of sound in air by a cylindrical object (57). We assume that the moth's abdomen is a cylinder of radius 0.6 mm and that the angular separation of the tympana is $\approx 30^\circ$ along the abdomen circumference. For a biologically relevant sound, male song whose dominant frequency ≈ 100 kHz, arriving from a lateral source, we calculate an SPL differential of 3.1 dB between the superposition of incident + scattered sound at the left and right tympana (Supporting Information S1). The actual differential is expected to be considerably less than 3.1 dB, as the ventral surface of the abdomen in the region of the tympana is flattened, thereby reducing the angular separation between axes normal to the body surface at the 2 locations.

ing alternative means by which small animals might achieve directional hearing (14). Adult body lengths of males and females average 8.5 and 11.5 mm, respectively, and the 2 tympana, situated ventrally on the 1st abdominal segment, face in nearly the same direction and are separated by $< 600 \mu\text{m}$ (Figure 1) (15). Thus, even when sound is of very high frequency and arrives from a lateral source, a standard IID mechanism would fail to generate a meaningful differential between the 2 ears (Figure 1; Supporting Information S1). Likewise, the ITD would be 1.75 μs , less than stochastic variation in neural transmission. Despite these anatomically imposed constraints, *A. grisella* display a level of directional hearing that affords the localization of a distant sound source. Male *A. grisella* remain stationary on the substrate and, via wing-fanning, produce a train of damped pulses of ultrasound (70-130 kHz; 80-100 pulses $\cdot\text{s}^{-1}$; pulse length 100-150 μs) that are attractive to females up to 1 m away (16). Receptive females will run in the general direction toward a singing male or a speaker broadcasting a synthetic song stimulus, and the many behavioral studies conducted on *A. grisella* showed that such localization is often accomplished within 20-30 s (17). Moreover, females experience little difficulty in turning to localize the sound source regardless of their initial orientation, implying that their directional hearing incorporates a mechanism for overcoming the

problem of front-rear ambiguity. *A. grisella* in flight respond to bat echolocation signals by dropping vertically, and when running on the substrate their response is a sudden cessation of movement (18).

As in other Pyralidae, each tympanum in *A. grisella* is divided into a thick anterior and a thin posterior segment (Figure 1) (19,20). Vibration of the 2 segments in response to sound is complex, and deflections are greater in the posterior segment. We hypothesized that directional hearing in this small moth relies on fine-scale aspects of vibration in the segmented tympana, and we employed 4 approaches to specify the ability to localize a sound source and to discern how features of tympanal vibration afford this ability. We began by analyzing the orientation of female *A. grisella* to a synthetic male song stimulus while moving on a locomotion compensation sphere. We then used 3-dimensional laser Doppler vibrometry to measure deflections of the tympanal membranes in response to sound broadcast from different azimuth angles. Via X-ray computer aided tomography (CT) scanning we searched for potential morphological connections or baffles between the left and right ears. Finally, we used the CT scans to construct a finite element model of the sound field around the moth's body, and we modelled this field for sound sources located at different azimuth angles.

Results and Discussion

74% of *A. grisella* females tested on the locomotion compensation sphere ran toward the virtual source of the synthetic song stimulus for at least 15 s (e.g. Fig. 2.a). Absolute angular deviations of travel headings with respect to the stimulus, whose heading was defined as 0° , taken over the previous 1 s of movement ranged from 21° - 38° for the initial 10 s of phonotaxis (average values of 17 females taken at 1-s intervals beginning at 1 s). Travel headings were evenly divided between the left and right sides of the 0° heading (sign test, $p > 0.25$) and had standard deviations ranging from 15° - 25° . Whereas the highest absolute angular deviation (38°) occurred at 1 s following the onset of phonotaxis, deviations did not decline significantly over the following 9 s (repeated measures ANOVA, $p = 0.07$; for 1-s intervals beginning at 2 s, $p = 0.30$). At 15 s, the absolute angular deviation was still $27^\circ \pm 24^\circ$. 6 moths began their movement with an 'instantaneous heading', measurement taken over the last 100 ms, $> 90^\circ$ with respect to the stimulus. But in 5 of these 6 insects the travel heading measured over the previous 1 s was already $< 45^\circ$ at 1 s. Running speed remained high throughout the trials ($5.7 \pm 1.6 \text{ cm}\cdot\text{s}^{-1}$, mean \pm sd), equivalent to 5-6 body lengths $\cdot\text{s}^{-1}$ as measured along the trajectory. 90% of the females tested made at least one circling movement of small radius ($< 3 \text{ cm}$), as well as angular deviations exceeding 90° , during their trials.

Females tested with a song stimulus that included a 3-s silent pause beginning at 8 s usually made angular deviations wider than 90° , and even circled completely, at the beginning of the silent pause, movement that had been observed less frequently during the last 3 s of the stimulus prior to the pause (sign test, $p < 0.01$; Fig. 2.b). By the end of the pause many females had ceased movement (13 of 25 insects), but they usually began reorienting and moving toward the stimulus when the sound continued and again made wide angular deviations during the initial 3 s, activity performed less frequently during the succeeding 3-s interval (sign test, $p < 0.01$). Females tested with a song stimulus broadcast from 2 sound sources, the first 8 s from a speaker at 0° and the second 8 s from a speaker at 135° , mostly turned clockwise (16 of 21 females), as opposed to counter-clockwise, during the initial 2 s of the broadcast from the second speaker and reoriented and moved toward it (Fig. 2.c). These reorientations were generally gradual and finished with a travel heading within 45° of the heading of the second speaker.

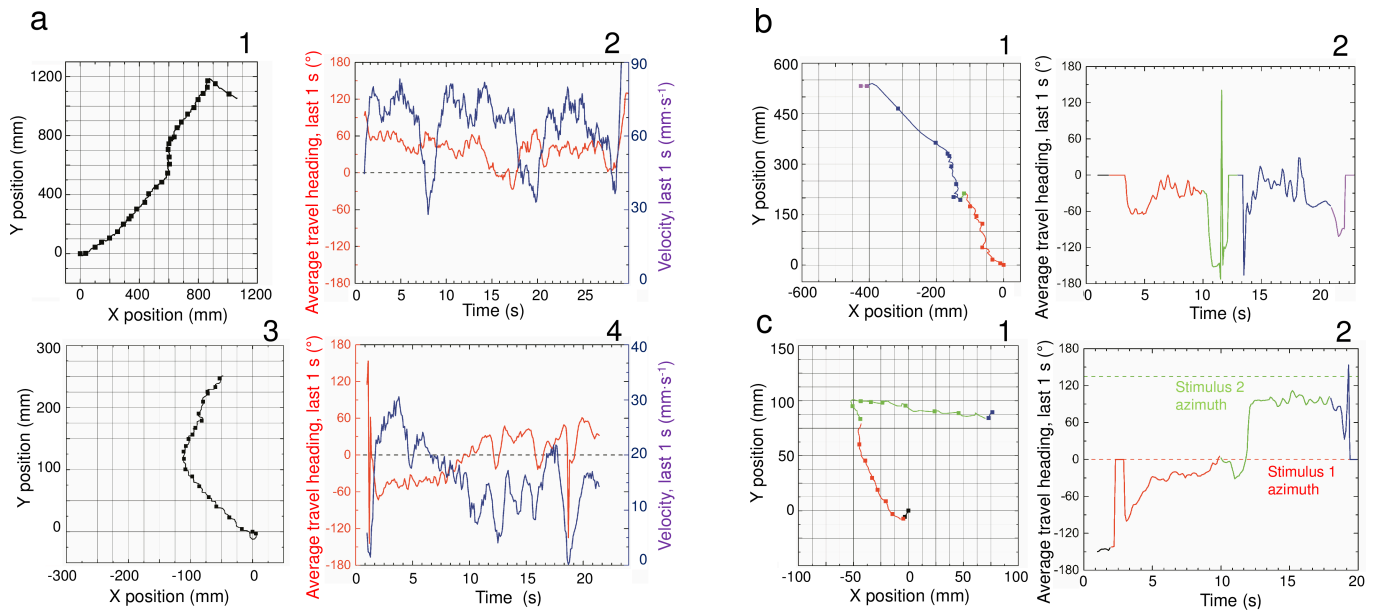


Fig. 2. a) Trajectories of 2 representative *A. grisella* females tested for orientation to a 30-s male song stimulus while running on a locomotion compensation sphere. Panels 1 and 3 show the females' x,y coordinates in a virtual plane over the course of their trials. The starting point is 0,0 and the sound source is located along the vector normal to the x-axis. Symbols along each of the trajectories indicate the female's position at successive 1-s intervals. Panels 2 and 4 show the females' average headings relative to the sound source over the preceding 1-s interval as measured every 100 ms (red line) and their velocities over that preceding 1-s interval (blue line). The female depicted in panels 1 and 2 retains a heading from 30° to 50° throughout her trial, whereas the female depicted in panels 3 and 4 follows a heading approximately +45° for the first 10 s and then switches to a heading approximately -30°. b) Trajectory of a representative female tested for orientation to a 19-s stimulus consisting of 8 s of song, 3 s of silence, and 8 s of song. Panel 1 shows the trajectory and panel 2 shows the average heading over the preceding 1 s, as in a) above. The female follows a heading approximately -30° during the first 8 s of song, circles during the 3-s silent pause and stops, and then resumes a heading from -20° to -40° during the second 8 s of song. c) Trajectory of a representative female tested for orientation to a 16-s stimulus consisting of 8 s of song from a speaker at 0° followed by 8 s of song from a speaker at 135°. Panel 1 shows the trajectory and panel 2 shows the average heading over the preceding 1-s interval, as in a) above; the average heading is shown relative to 0° for both parts of the trial. The female follows a heading approximately -30° with respect to the first speaker and then turns clockwise and follows a heading approximately 100°, equivalent to -35° with respect to the second speaker.

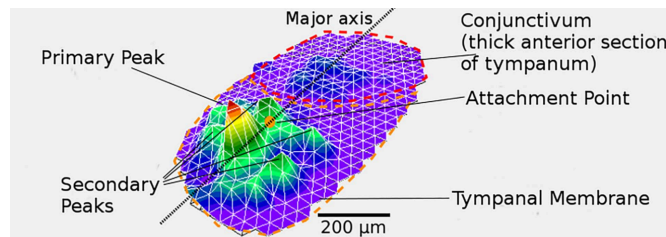


Fig. 3. Laser vibrometry measurement of deflection magnitude measured at 390 points in a representative tympanum (the tympanum presented is the insect's right); see text in Laser Vibrometry section of Methods for determination of deflection. The deflections are characterized by a sharp, primary peak and several smaller secondary peaks nearby. The sharp primary peak was found in the center of the posterior, membranous segment of the tympanum (region surrounded by dashed orange line). When the sound source was located along the major axis of the tympanum, the primary peak coincided with the neural attachment point (see Figure 1), but the peak moved slightly when sound arrived from other directions.

3-dimensional laser vibrometry testing demonstrated that *A. grisella* can localize high frequency sound because their segmented tympana are not oriented in parallel and each functions as a distinct pressure-gradient receiver. Measurements of the response of a tympanum to broadcasts of 100 kHz sound showed that the maximum deflection occurred at or close to the location in the center of the thin posterior segment where the peripheral neurons are attached (Figure 3). Membrane deflection at this attachment point is expected to influence the probability that an action potential(s) is transmitted by the peripheral neurons, and we measured the maximum deflection there for sound broadcast

at all azimuth angles. Responses to these broadcasts revealed a primary deflection peak in the right tympanum for a sound source located 30° to the left of the insect's midline (azimuth = -30°) as well as a secondary deflection peak for sound located at 150° azimuth. Similarly, the tests of the left tympanum revealed a primary deflection peak at +30° azimuth. The primary peak averaged 1.6 x the deflection magnitude of the secondary peak, and 2.8 x the deflection magnitude for all other speaker angles tested (Figure 4.a). Significantly, a comparable study of tympanum responses in a closely related species, *Galleria mellonella* (greater waxmoth; Pyralidae: Galleriinae), that perceives high frequency sound but has neither a male calling song nor female phonotaxis (12) did not reveal pronounced deflection peaks for any azimuth (Figure 4.b).

At 100 kHz the wavelength of sound in air is 3.4 mm, less than 6 x the average dimension of an *A. grisella* tympanum. Consequently, a pressure gradient will occur between 2 points on the tympanum when sound waves arrive from a source situated along the line through those points (21). The gradient increases as the 2 points are separated more widely, and maximum gradients will thus occur for sound arriving along the major axis of the tympanum, which is roughly aligned with the longitudinal axis of the body (Fig. 1). Because the neural attachment point is situated along or close to the major axis and higher pressure gradients will result in greater membrane deflections, sound arriving along the major axis will elicit maximum deflection of the attachment point. It is likely that this general feature of tympanum geometry is further modified and enhanced by material properties of the membrane that yield greater deflection for sound arriving from a distinct azimuth at each ear. For example, when sound arrives at the right (left) tympanum from -30° (+30°), wavefronts will be parallel to the boundary between the thick anterior and thin

409
410
411
412
413
414
415
416
417
418
419
420
421
422
423
424
425
426
427
428
429
430
431
432
433
434
435
436
437
438
439
440
441
442
443
444
445
446
447
448
449
450
451
452
453
454
455
456
457
458
459
460
461
462
463
464
465
466
467
468
469
470
471
472
473
474
475
476

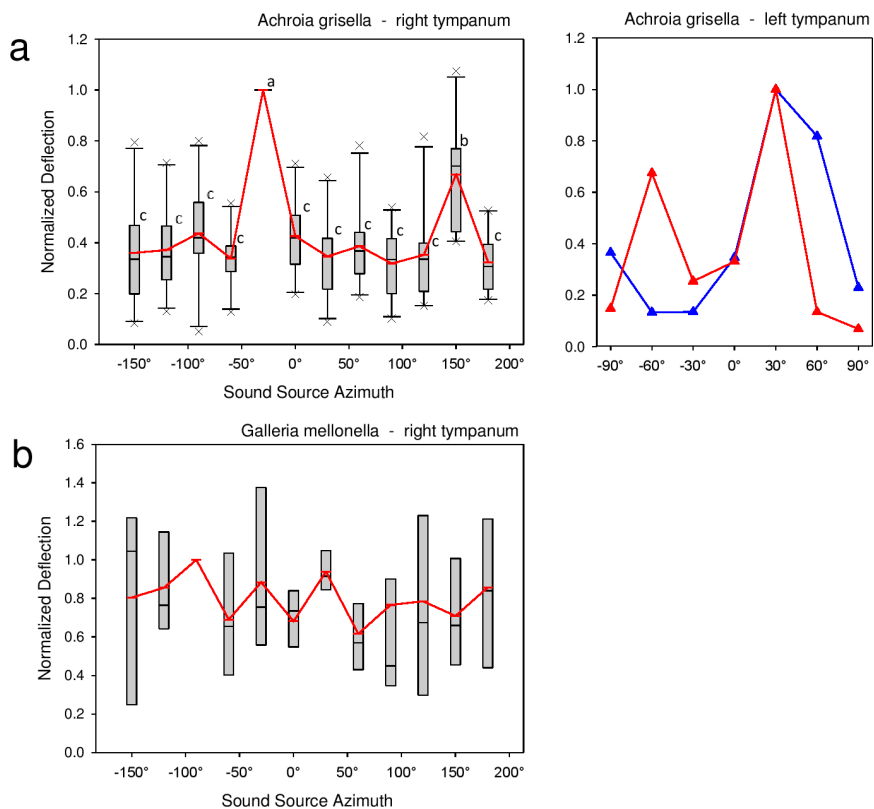


Fig. 4. a) Left panel: Normalized deflection magnitude at the attachment point in the right tympanum of 10 *Achroia grisella* females for sound arriving from different azimuth angles. Angles are measured clockwise around the vector normal to the dorsal surface of the moth, with the body midline defined as 0°. Absolute deflection magnitudes were highest at an azimuth = -30° in 9 of 10 females; the remaining female's maximum deflection occurred at +150°. We therefore normalized each female's deflection magnitudes by setting her value at -30° to 1.0 and adjusting her other values accordingly. Box plots show median (black), mean (red), 25%-75% range (box), 10%-90% range (whiskers), and outliers for each azimuth angle. Azimuths not sharing a letter marking the box are significantly different; Repeated measures ANOVA (SigmaStat 3.5) with Holm-Sidak post-hoc test for pairwise differences, $p < 0.001$. Right panel: Normalized deflection magnitude in the left tympanum of 2 *A. grisella* females (red and blue plots). Absolute deflection magnitudes were highest at +30° in both females, and we therefore set their values at this azimuth to 1.0. b) Normalized deflection magnitude at the attachment point in the right tympanum of 8 *Galleria mellonella* females. The highest deflection magnitude averaged across all 8 females occurred at -90°, and we therefore set each female's value at this azimuth to 1.0. Normalized deflections do not differ between azimuths; Repeated measures ANOVA, $p = 0.625$.

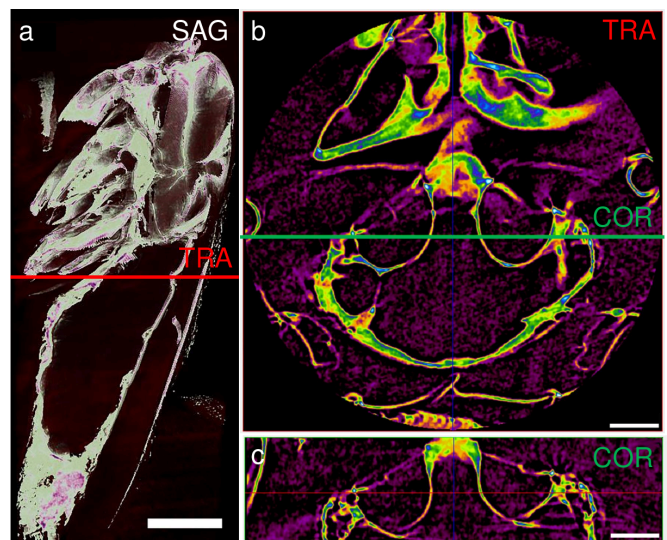


Fig. 5. X-Ray CT scans of a female moth, focusing on the region between the 2 tympana. a) Sagittal scan of entire body. TRA indicates transverse plane through the tympana on the first abdominal segment; scale bar is 1 mm. b) Transverse scan of plane indicated by TRA in scan a. Yellow indicates a sclerotized region; tympanal cavities are clearly shown (TY) and no internal sclerotized connection between the cavities is evident. COR indicates coronal plane through the tympana; scale bar is 200 μm . c) Coronal scan of plane indicated by COR in scan b. Again, no internal sclerotized connection is evident; scale bar is 200 μm .

posterior segments (Fig. 1) and may thereby generate maximum excitation at the attachment point, in the center of the posterior segment.

The trajectories of females on the sphere, which are centered around +30° and -30° with respect to the synthetic song stimulus, are congruent with our laser vibrometry measurements and description of the tympana as 2 distinct pressure gradient receivers. Interestingly, our data are not consistent with the standard model of tracking binaural cues (22,23) in which an animal attends to information received at both ears and turns toward the one more strongly stimulated. *A. grisella* females do not regularly zig-zag to the left and right of a 0° heading, and while following a heading of +30° (or -30°) they do not generally veer farther to the right (or to the left), as would be predicted by the standard model. Whereas females quickly orient in the general direction of the song stimulus during the initial 1 s of a trial, they do not continue to improve their alignment toward a 0° heading afterward. Rather, *A. grisella* seem to 'lock onto' the stimulus with either the left or the right ear, and then run forward while pursuing a heading of approximately +30° or -30°, respectively, and ignoring the other ear. The moths do waver from a precise heading, of course, which may have several consequences. Small departures from +30° or -30° might be corrected by random turning or a sequential comparison algorithm, a mechanism that *A. grisella* are known to possess (24). Larger departures can result in locking onto the stimulus with the other ear (e.g. Fig. 2.a) or in losing the stimulus entirely and then regaining it via wide deviations or circling, a form of auditory scanning (e.g. Fig. 2.b). Tracking of monaural cues – attending only to information received at a single ear – may function in *A. grisella* because the primary deflection peak is sharp (Fig. 4a) and likely evokes a relatively high excitation level in comparison with excitation at other headings, as would be experienced by the opposite ear. Moreover, the moths have 2 different opportunities to lock onto the stimulus, one with the left ear and one with the right, and each would yield phonotaxis toward the sound source (Fig. 2.a). Our model of monaural tracking predicts that off of the sphere a female would follow a curved trajectory in approaching

477
478
479
480
481
482
483
484
485
486
487
488
489
490
491
492
493
494
495
496
497
498
499
500
501
502
503
504
505
506
507
508
509
510
511
512
513
514
515
516
517
518
519
520
521
522
523
524
525
526
527
528
529
530
531
532
533
534
535
536
537
538
539
540
541
542
543
544

545
546
547
548
549
550
551
552
553
554
555
556
557
558
559
560
561
562
563
564
565
566
567
568
569
570
571
572
573
574
575
576
577
578
579
580
581
582
583
584
585
586
587
588
589
590
591
592
593
594
595
596
597
598
599
600
601
602
603
604
605
606
607
608
609
610
611
612

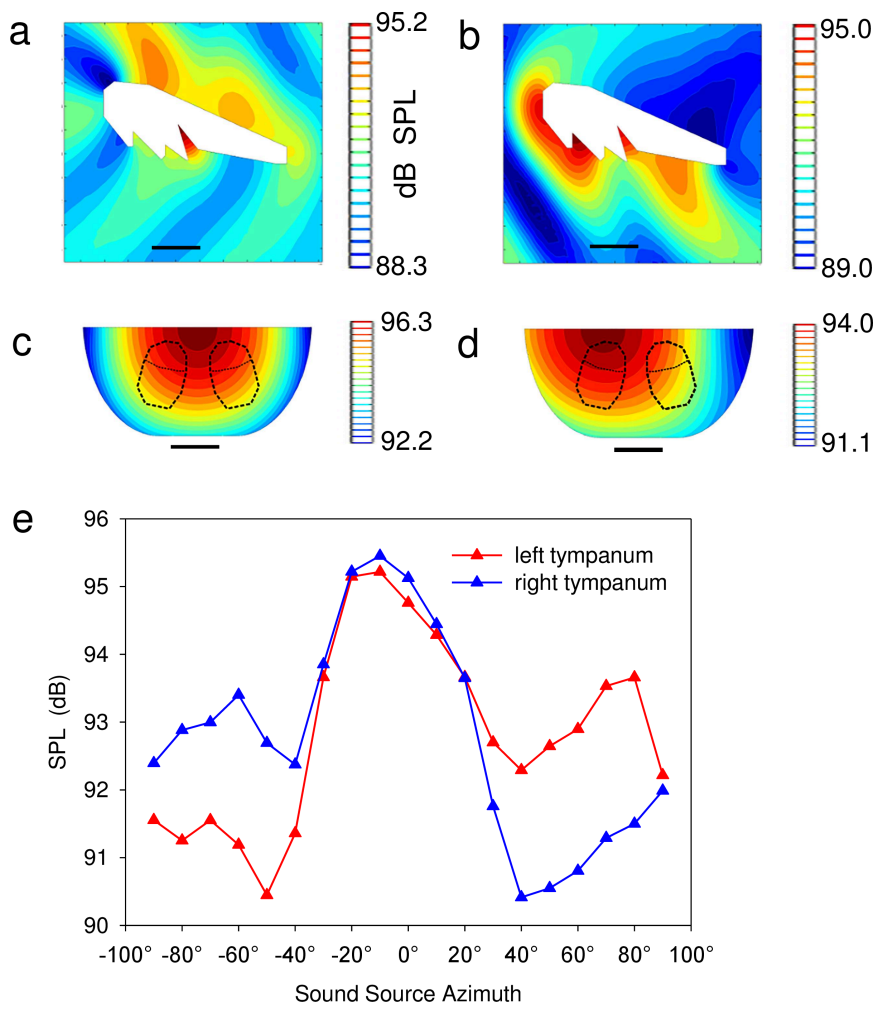


Fig. 6. Sound pressure level (SPL) around a simple model of a female moth as simulated by COMSOL MultiPhysics. a) Sagittal section, with anterior to the left, showing predicted SPLs for a 94 dB (measured at air domain boundary 10 cm from the insect) sound source situated directly in front of the moth. SPLs are 6-7 dB higher in the cleft between the abdomen and thorax, the location of the 2 tympana; scale bar is 1 mm. b) Predicted SPLs for the same sound source located directly behind the moth. The SPL in the cleft between the abdomen and the thorax is now 2-3 dB lower than when the sound source was in front of the insect; scale bar is 1 mm. c) Predicted SPLs across the ventral surface of the 1st abdominal segment for a sound source directly in front of the insect; approximate locations of the tympana are indicated by dashed lines; anterior is at the top. SPL is equivalent across both tympana and reaches a maximum of 96.3 dB; scale bar is 500 μ m. d) Predicted SPLs for a sound source at -30° azimuth with respect to the dorsal view of the insect (+30° in the ventral view shown). SPL is notably higher across the contralateral tympanum (ranging from 93.9-94.8 dB) than across the ipsilateral one (ranging from 93.9-92.1 dB); scale bar is 500 μ m. e) Predicted SPLs at the neural attachment points in the left tympanum (red) and the right tympanum (blue) for a sound source situated at azimuths ranging from -90° to +90°.

613
614
615
616
617
618
619
620
621
622
623
624
625
626
627
628
629
630
631
632
633
634
635
636
637
638
639
640
641
642
643
644
645
646
647
648
649
650
651
652
653
654
655
656
657
658
659
660
661
662
663
664
665
666
667
668
669
670
671
672
673
674
675
676
677
678
679
680

a male, as a +30° (-30°) heading with respect to the male would be represented by an absolute heading that shifts continuously toward the left (right). In fact, curved trajectories are regularly observed in females approaching males in a laboratory arena (17).

Our X-ray CT scanning eliminated the possibility that some of the moth's localization of a sound source could be attributed to an IPD device or a rocker-arm bridging the 2 ears. These scans revealed no sign that a trachea leads to the air cavity behind the tympanal membrane, allowing sound waves to arrive at its interior surface. Similarly, they revealed no internal sclerotized connections between the two ears that could magnify the IID or ITD (Figure 5). Moreover, laser vibrometry measurements showed that tympanum deflections were equivalent for sound arriving at -90° and +90° (Fig. 4a), implying that simple cross-body transmission of sound was not generating an informative IID. The equivalence of deflections generated by sound sources at -90° and +90° also clearly refutes the possibility that the moth's body scatters high frequency sound arriving laterally and thereby affords a meaningful IID for localization (cf. Figure 1; Supporting Information S1).

The rapidity with which *A. grisella* females found the general direction of a playback stimulus at its onset demonstrates reliable resolution of the front-rear ambiguity in directional hearing (25). Unlike phonotaxis toward the stimulus, these rotational movements do appear to be initiated by comparison of information received at the 2 ears: At the end of the first part of the 2-speaker trials most females faced in the general direction of the

sound stimulus at 0° (e.g. Fig. 2.c). Consequently, their right ears were normally more closely aligned than their left ears with the sound stimulus at 135°, which was broadcast from behind them in the second part of the trial. Thus, their right ears would have been more strongly stimulated in the second part, and binaural comparison would have led them to rotate toward the right and eventually face in the general direction of the 135° speaker. Our data largely agree with this prediction, as most females turned clockwise (toward the right) to reorient, and the 5 females who turned counter-clockwise had all been strongly oriented toward the left of the 0° speaker. We suggest that binaural comparison operated in this context because the secondary deflection peak at -150° or +150°, being much less pronounced than the primary deflection peak (Fig. 4a), did not invoke a high enough level of relative excitation to release the monaural tracking process. The difference between the primary and secondary peaks may arise because the *A. grisella* tympanum itself acts as an asymmetric rocker-arm device that amplifies deflections at the neural attachment point in the center of the posterior segment when sound waves arrive along the major axis from the front but much less so when sound arrives from the rear.

Finite element analysis of the sound field around the moth indicated a localized elevation in sound pressure level in the immediate vicinity of the tympana when sound waves arrive from a source within 30° of the moth's midline. The region is approximately 1 mm in diameter and features sound pressure levels 6-7 dB above the rest of the sound field (Figure 6). It forms by

681 diffraction in the ventral cleft between the thorax and abdomen,
682 and it may increase general auditory sensitivity in *A. grisella*.
683 Because the pressure in the region of the contralateral tympanum
684 is 1-2 dB higher than on the ipsilateral side when sound arrives
685 from 30° to one side of the midline, the diffraction effect may
686 also improve directional hearing beyond the level afforded by the
687 distinct geometry and orientations of the tympana. At the same
688 time, finite element analysis also demonstrates that diffraction
689 cannot be the main factor responsible for directional hearing and
690 generating tympanum deflection peaks for sound at azimuths of
691 -30° and +30°: Our analysis predicts very similar sound pressure
692 levels at the neural attachment point in a tympanum for sound
693 sources at azimuths of -90° and +90° (Figure 6.e), and the small
694 differences (≈ 2 dB) seen between the contralateral and ipsilateral
695 tympana for azimuths from 30° to 80° and from -30° to -80° would
696 not account for the magnitude (≈ 9 dB) and specific position
697 (azimuth $\approx 30^\circ$) of the primary deflection peak (Figure 4.a).

698 *A. grisella* obviously localize sound sources, but the means
699 by which they do so is less direct than in other acoustic insects
700 (26,27). Their putative monaural tracking is suggestive of a line-
701 following robot (28,29), albeit a rather inefficient one. They
702 follow a curvilinear path toward a sound stimulus, their trajectory
703 is often interrupted by lateral excursions in order to regain a
704 signal, and any prompt arrival at the stimulus or a live male is
705 largely due to their running speed and maneuverability. Given
706 the importance of efficient mate finding, one must question why
707 this protocol persists. A likely answer may be found in studying
708 the timeline of evolution of acoustic communication in the Lep-
709 idoptera (30). All but one of the 10-12 independent origins of
710 hearing in the Lepidoptera occurred since 65 MA before present,
711 the currently accepted date for the appearance of echolocation
712 in bats (12,31). This timing, taken in conjunction with ecological
713 patterns, has led to the inference that tympanal organs and
714 hearing ability in Lepidoptera evolved as a response to hunt-
715 ing by insectivorous bats: In 3 major moth clades, Noctuoidea,
716 Geometridae, and Pyraloidea, each including $> 20,000$ species,
717 hearing is ubiquitous except in species found in geographical
718 regions lacking bats or that are active during seasons or times of
719 day when bats are not (32). In these latter moth species tympanal
720 organs and hearing ability are reduced or absent, presumably as
721 a secondary loss (33). The hearing that had evolved in moths is
722 simple but highly effective for avoiding and escaping predatory
723 bats. Moths have 1-4 neurons per tympanum and minimum tuning
724 over a broad frequency range which extends well above 100 kHz
725 in some pyraloids (34,35). While negative phonotaxis away from
726 bat echolocation signals does occur in large-bodied noctuoids
727 (36-38) and geometrids (39), whose relatively sensitive ears are
728 situated laterally and afford an IID as high as 15 dB (40,41),
729 directional responses as such may be negligible or absent in the
730 pyraloids (18). This latter group, being generally smaller, are not
731 superior fliers and have relatively high hearing thresholds (42,43),
732 features that would render the ability to localize a bat relatively
733 unimportant. Unlike noctuoids (44), a pyraloid moth may not
734 detect a bat until it is close, and any defensive flight maneuvers
735 might then be too slow to exploit information on the location of
736 the bat. Consequently, just diving toward the ground if in flight
737 and becoming immobile – and silent – if running on the substrate
738 (45-47) appear to be their main defenses that rely on hearing.

739 In contrast to hearing, acoustic communication in moths is
740 rare and only occurs among isolated species and genera in the 3
741 major clades, a pattern that reflects an origin of sound signalling
742 via a sensory bias mechanism (45,48). In many cases the acoustic
743 communication is restricted to close-range courtship (49) wherein
744 directional hearing would not be critical, but in species such as
745 *A. grisella* that transmit sound signals over longer distances the
746 evolution of accurate directional ability would be expected. Con-
747 ceivably, this development could have been achieved via evolution

748 of an entirely new, highly efficient mechanism; e.g., the rocker-
749 arm device in parasitoid *Ormia* flies. But unlike *Ormia*, whose
750 acoustic perception of host crickets had probably evolved de
751 novo, *Achroia* already had an ancient system for perceiving sound.
752 Thus, it apparently followed a different evolutionary trajectory
753 and refitted old equipment – a very basic bat detector – for a new
754 task, localizing a mate.

755 Despite the overall similarity between *Achroia* ears and those
756 of related moth species wherein the ears still serve primarily as
757 bat detectors, some aspects of the directional hearing mechanism
758 in *A. grisella* may be highly derived characters. The differential
759 deflection of the neural attachment point in response to sound
760 sources at different azimuth angles around the tympanum, partic-
761 ularly for sources in front vs. behind, depends on specific
762 vibration properties of the 2 segments of the tympanal membrane.
763 That such differential deflection is not observed in the closely
764 related species *G. mellonella* (Fig 4.b) reinforces the notion that
765 the directional hearing in *A. grisella* is a derived trait which
766 coevolved with its long-distance acoustic communication. Even
767 so, the special vibration modes and deflections of its tympana
768 must operate within the confines of the basic pyraloid moth ear,
769 whose simplicity can be a constraint. For example, the primary
770 deflection peak of tympanal vibration is rather sharp, exhibiting
771 changes in magnitude of 0.4 dB / ° azimuth, and one might expect
772 the females to use this information for accurately following a $\pm 30^\circ$
773 heading toward the song stimulus (27). But with only 3 peripheral
774 neurons per tympanum (15,50), *A. grisella* would not be able to
775 benefit from pooling the responses of a population of neurons,
776 and its heading precision remains limited (Fig. 2) as a result of
777 intrinsic transmission variation within individual neurons.

778 Our findings are consistent with the general premise that
779 when specific trait B depends on the existence of general trait A,
780 and A is already present and functional, the evolution of B may
781 be constrained to forms that are less than optimal with respect
782 to what is known to be possible. That is, peaks and valleys in
783 the adaptive landscape may restrain evolutionary trajectories to
784 certain routes (51,52), thereby ruling out various possibilities for
785 some species. Further study of communication in diverse acoustic
786 species should reveal the extent to which this premise may be
787 applicable to directional ability and basic hearing.

788 Materials and Methods

789 Moths and Phonotaxis

790 *A. grisella* used in the experiments came from a laboratory colony
791 established from moths collected in the vicinity of honeybee colonies in
792 Florida in 2003. We reared the moths on a standard diet (16) and kept them in
793 an environmental chamber maintained at 25° and a 12:12 L:D photoperiod.
794 Because *A. grisella* females normally become unreceptive following a single
795 mating, we only used virgin females in our tests. All females were between
796 1-3 days old at the time of their tests, which were conducted during the first
797 4 h of the photoperiodic night.

798 We measured sound localization by analyzing phonotactic responses of
799 females to a male song stimulus while running on a locomotion compensa-
800 tion sphere (Syntech LC300). The stimulus was a song recorded from a single
801 male individual in the laboratory colony who exhibited acoustic features that
802 were average for the population. We broadcast the stimulus from a high-
803 frequency speaker (Avisoft Scanspeak, driven by an Avisoft Ultrasound Gate
804 Player 216M digital: analogue converter/amplifier) attached to a moveable
805 arm. This apparatus allowed us to position the speaker at the same elevation
806 as the test female situated on the top of the sphere while orienting it directly
807 at her but from a variable location behind the sphere. In each trial the
808 stimulus was adjusted to 80 dB SPL (peak measurement; 0 dB = 20 μ Pa) at
809 the female's location, 15 cm distant from the speaker (cf. ref. 16). Stimulus
810 amplitude was re-calibrated at the beginning of each test day.

811 The operation of the locomotion compensation sphere retained the test
812 female on the top of the sphere throughout the trial. To ensure that she
813 remained at this location and did not fly off the sphere, we removed the
814 distal 2/3 of her wings on the day prior to testing. Females were immobilized
815 by brief cooling before wing removal. We did not observe any adverse effects
816 of wing removal on the female's running or phonotaxis, which was similar
817 to that seen in laboratory arenas (17) and in their natural milieu adjacent to
818 honeybee colonies (53).

819 We tested 23 females in 30-s trials that analyzed responses to the song
820 stimulus broadcast from a location at 0° azimuth, directly behind the frame

holding the sphere. In each trial we obtained the female's trajectory as reconstructed with Syntech TrackSphere software from the series of her x,y coordinates in virtual space sampled at 100-ms intervals. We used these data to determine 1) a running average of the insect's azimuth heading relative to the stimulus taken over the previous 1 s, 2) the running velocity, taken over the previous 1 s, along the trajectory, and 3) the initial heading at the start of the trial. In a second locomotion experiment we tested 26 females in 19-s trials that comprised 8 s of the song stimulus, 3 s of silence, and a second 8 s of song. And in a third locomotion experiment using 2 speakers, we tested another 26 females in 16-s trials in which the song stimulus was broadcast from a speaker at 0° for the initial 8 s and then from a speaker at 135° for the next 8 s.

Laser Vibrometry

We used laser vibrometry to measure *in vivo* tympanum deflections in response to high frequency sound. Female *A. grisella* were immobilized by cooling and then mounted, ventral side up, on a block of resin and beeswax. The moth's legs were removed and the thorax was lifted so that the (abdominal) tympana were fully exposed. We fixed the mounting block with the moth on a stable, rotating stage beneath a scanning 3-dimensional laser vibrometer (Polytec PSV MSA100-3D) and then precisely positioned the mounting such that the vibrometer focused on one of the moth's tympana. The results presented here represent the out of plane motion of the membrane only. A 100 kHz (pure tone sine wave) sound stimulus was generated from an Agilent 33220A 20 MHz Function Waveform Generator, passed through a Brandenburg 475R Photomultiplier Power Supply, and broadcast from a custom-built wide band air-coupled electrostatic transducer (54) situated 30 cm to the side of the moth. Previous studies demonstrated that *A. grisella* females move toward pure tone pulses generated from a wide range of ultrasound frequencies (14) and that pulsed or continuous pure tone sound at these frequencies elicits a certain level of tympanum response; this response only varies ± 2 dB for stimuli of a fixed intensity ranging from 80 kHz to 100 kHz and ± 6 dB for 40 kHz to 100 kHz (20). We chose 100 kHz for our sound stimulus because it is the dominant frequency in male song among the *A. grisella* population tested, and it is also the frequency that elicits maximum tympanum responses (20). The stimulus was calibrated to 86 dB SPL with the aid of a precision microphone (Bruel and Kjaer 4138) placed 1 cm behind the moth and oriented directly toward the broadcasting transducer. This stimulus and its orientation were designed to represent a nearby male's song as perceived by a female moving on a horizontal surface. We tested the right tympanum in each of 10 females with 12 broadcasts of the stimulus presented in 30° azimuth increments from -150° to +180° relative to the moth's midline. After each broadcast we rotated the stage with the mounting block and moth to the next azimuth, confirmed the position of the transducer relative to the moth, identified the midline of the moth using the crosshairs in the microscope of the vibrometer, and made final adjustments to the rotating stage relative to the midline. We used the microscope to identify the exact position of the neuronal attachment point in the tympanum for each azimuth increment.

Deflections were measured as the vertical distance between the highest and lowest displacement of a given point on the tympanum while the sound stimulus was broadcast. This procedure was conducted for 390 points on the tympanum, each point being measured 25 times. Data analysis was performed by Polytec v9.2 software, which sampled the vibrometer signals at 512 kHz with a sample time of 128 ms. An FFT was performed with a rectangular window and 25600 FFT lines giving a frequency resolution of 7.8125 Hz. Although our sound stimulus was a pure tone, an FFT was advantageous as it allowed us to use the vibrometer software's automatic generation of the linear frequency spectrum and corresponding coherence and cross-correlation figures. The complex average of the velocity, \bar{v} , was calculated as the average of the real (*Re*) and imaginary (*Im*) components (representing the magnitude and the phase of oscillation, respectively) of each measurement, V_n :

$$\bar{v} = \frac{1}{N} \left(\sum_{n=1}^N \text{Re}(V_n) + i \sum_{n=1}^N \text{Im}(V_n) \right)$$

The velocity was then converted into a displacement in post-processing. We focused specifically on measuring deflection at the point where the peripheral neurons are attached to the tympanal membrane.

1. Yost WA, Gourevitch G (1987) *Directional Hearing* (Springer-Verlag, New York).
2. Greenfield MD (2002) *Signalers and Receivers: Mechanisms and Evolution of Arthropod Communication* (Oxford Univ. Press, Oxford UK).
3. Michelsen A (1992) Hearing and sound communication in small animals. Evolutionary adaptations to the laws of physics, *The Evolutionary Biology of Hearing*, eds Webster D, Popper A, Fay F (Springer-Verlag, New York), pp. 61–77.
4. Michelsen A, Popov AV, Lewis B (1994) Physics of directional hearing in the cricket *Gryllus bimaculatus*. *J Comp Physiol A* 175(2): 153–164.
5. Robert D, Göpfert MC (2002) Novel schemes for hearing and orientation in insects, *Curr Opin Neurobiol* 12(6): 715–720.
6. Ewing AW (1989) *Arthropod Bioacoustics: Neurobiology and Behavior* (Cornell University Press, Ithaca, NY).

We tested the left tympanum in 2 additional moths with 7 broadcasts at azimuths from -90° to +90° and thereby compared the stimulus orientation angle generating maximum deflection in the left and right tympana. All 12 moths remained alive throughout the series of measurements, which typically lasted 3 h. However, many moths would not survive longer testing, and this constraint precluded reliable measurements of the left and right tympana in the same individual. For each moth measurements began at 0° azimuth and were incremented clockwise. Thus, the stimulus eliciting the primary deflection peak (Figure 4) was the last one tested in measurements of the right ear but the second one tested in measurements of the left ear.

We obtained *G. mellonella* larvae from Blades Biological Supplies, Edenbridge, U.K. Rearing was similar to that for *A. grisella*, and we followed the same laser vibrometry protocol to measure tympanum deflections in the right tympanum of 8 females except that the sound stimulus was 60 kHz, the frequency to which *G. mellonella* are maximally sensitive (42). The tympana of *G. mellonella* are approximately twice the size of those in *A. grisella*, implying that a pressure gradient mechanism in *G. mellonella*, should it exist, would function at much lower frequencies than in *A. grisella*, further justifying the stimulus we tested.

X-Ray CT Scanning

X-Ray Computer Tomography (CT) scans were performed using a Bruker Skyscan 1172. A moth was mounted on a block of dental wax with its dorsal side up and encased in a 5 mm diam. plastic tube. The tube was then placed vertically, with the moth's head upwards, in the imaging chamber of the scanner. A voltage of 80 kV was applied to the X-Ray source, which was positioned 85.79 mm from the center of rotation of the subject. No filter was applied to the X-Ray source, and images were generated with 2664 x 4000 pixels at a resolution of 3.58 μm per pixel.

A total of 2400 images were taken in 0.3° increments around one hemisphere of the moth; an average of 4 frames was taken at each rotation increment. The images were collected and a volumetric reconstruction of the moth body was generated by Bruker CTvol software. These images were generated by calculating the rate of attenuation of the X-Ray through the moth's body. The threshold for this attenuation signal was set manually in order to reveal only sclerotized structures and ignore soft tissue of the moth. 3 moths were scanned in this way, 2 of which were prepared by saturation in ethanol for 8 h followed by drying for 8 h. The scans were then performed the following day. The remaining moth was scanned immediately post-mortem with no additional preparation.

Sound Field Modeling

COMSOL MultiPhysics was used to simulate the 3-dimensional sound field around the moth's body. These simulations allowed us to estimate sound pressure levels around an intact moth assuming a normal posture, particularly in the region immediately adjacent to the tympana. A floating point mesh of the thorax and abdomen was generated by the X-Ray CT scanner and used as a template in SolidWorks for a simple geometrical representation of the moth body. A principal feature of this representation is the cleft between the thorax and abdomen, which is 500 μm wide at the ventral surface and extends 1500 μm back into the moth's body. The complete model comprised the thorax and abdomen fixed in a spherical air domain 10 mm in radius. As in the laser vibrometry measurements, the sound stimulus was a pure tone of 100 kHz presented parallel to the tympanum surface, with a variable azimuth angle around the axis normal to this surface. The location of the simulated sound source was modified in 10° azimuth increments, with 0° representing a sound source directly ahead of the insect and on its midline. We set the stimulus amplitude to 94 dB SPL at the boundary of the air domain.

Acknowledgements

The research leading to these results has received funding from the DSTL-DGA UK France PhD program, the European Research Council under the European Union's Seventh Framework Programme (FP/2007-2013) / ERC Grant Agreement no. 615030, the Centre National de la Recherche Scientifique (CNRS; France), and the Agence Nationale de la Recherche de France (contrat ANR-11-BSV7-025-01; EVOLCHOR). We thank Flavia Barbosa, Guy Bourdais, Alicia Jarrige, Virginie Party, and Darren Rebar for laboratory assistance at the IRBI in Tours, France, Abby Brown for artwork depicted in Figure 1, and Jeremy Gibson, Joseph Jackson, Andrew Mason, Virginie Party, Gerry Pollack and several anonymous reviewers for valuable criticisms of earlier versions of the manuscript.

7. Bailey WJ (1991) *Acoustic Behaviour of Arthropods* (Chapman & Hall, London).
8. Hedwig B (2014) *Insect Hearing and Acoustic Communication* (Springer-Verlag, Berlin).
9. Zanini D, Guerten B, Spalthoff C, Göpfert MC (2014) Sound communication in *Drosophila*, *Insect Hearing and Acoustic Communication*, ed. Hedwig B (Springer-Verlag, New York), pp. 205–218.
10. Barber JR, Leavell BC, Keener AL, Breinholt JW, Chadwell BA, McClure CJW, Hill GM, Kawahara AY (2015) Moth tails divert bat attack: Evolution of acoustic deflection. *Proc Natl Acad Sci USA* 112(9): 2812–2816.
11. Greenfield MD (2016) Evolution of acoustic communication in insects, *Springer Handbook of Auditory Research: Insect Hearing*, eds. Pollack G, Mason AC (Springer-Verlag, New York), pp. 17–47.
12. Greenfield MD (2014) Acoustic communication in the nocturnal Lepidoptera, *Insect Hearing*

953
954
955
956
957
958
959
960
961
962
963
964
965
966
967
968
969
970
971
972
973
974
975
976
977
978
979
980
981
982
983
984
985
986
987
988
989
990
991
992
993
994
995
996
997
998
999
1000
1001
1002
1003
1004
1005
1006
1007
1008
1009
1010
1011
1012
1013
1014
1015
1016
1017
1018
1019
1020

and Acoustic Communication, ed. Hedwig B (Springer-Verlag, New York), pp. 81–100.

13. Eaton JL (1988) *Lepidopteran Anatomy* (Wiley, New York).
14. Spangler HG, Greenfield MD, Takessian A (1984) Ultrasonic mate calling in the lesser wax moth. *Physiol Entomol* 9(1): 87–95.
15. Knopek L, Hintze-Podufal C (1986) On the morphology of the abdominal tympanic organ of the lesser wax moth *Achroia grisella* (Fbr.). *Zool Jahrb* 114: 83–93.
16. Jang Y, Greenfield MD (1996) Ultrasonic communication and sexual selection in wax moths: Female choice based on energy and asynchrony of male signals. *Anim Behav* 51: 1095–1106.
17. Alem S, Greenfield MD (2010) Economics of mate choice at leks: Do female waxmoths pay costs for indirect genetic benefits? *Behav Ecol* 21: 742–745.
18. Rodriguez RL, Greenfield MD (2004) Behavioral context regulates dual function of hearing in ultrasonic moths: Bat avoidance and pair formation. *Physiol Entomol* 29: 159–168.
19. Scoble MJ (1992) *The Lepidoptera: Form, Function and Diversity*. (Oxford University Press, Oxford UK).
20. Rodriguez RL, Schul J, Cocroft RB, Greenfield MD (2005) The contribution of tympanic transmission to fine temporal signal evaluation in an ultrasonic moth. *J Exp Biol* 208(21): 4159–4165.
21. Fletcher NJC (1992) *Acoustic Systems in Biology*. (Oxford University Press, Oxford UK)
22. Robert D (2005) Directional hearing in insects, *Sound Source Localization*, eds Popper AN, Fay RR, (Springer Handbook of Auditory Research, New York), vol. 25, pp. 6–35.
23. Römer H (2015) Directional hearing: From biophysical binaural cues to directional hearing outdoors. *J Comp Physiol A* 201: 87–97.
24. Greenfield MD, Tourtellot MK, Tillberg C, Bell WJ, Prins N (2002) Acoustic orientation via sequential comparison in an ultrasonic moth. *Naturwissenschaften* 89(8): 376–380.
25. Wightman FL, Kistler DJ (1999) Resolution of front-back ambiguity in spatial hearing by listener and source movement. *J Acoust Soc Am* 105(5): 2841–2853.
26. Mason AC, Oshinsky ML, Hoy RR (2001) Hyperacute directional hearing in a microscale auditory system. *Nature* 410: 686–690.
27. Schöneich S, Hedwig B (2010) Hyperacute directional hearing and phonotactic steering in the cricket (*Gryllus bimaculatus* deGeer). *PLoS ONE* 5(12): e15141. doi:10.1371/journal.pone.015141
28. Ismail AH, Ramli HR, Ahmad MH, Marhaban MH (2009) Vision-based system for line following mobile robot. *Indust Electron Appl*, IEEE, 2: 642–645. DOI: 10.1109/ISIEA.2009.5356366
29. Engin M, Engin D (2012) Path planning of line follower robot, *Education and Research Conference (EDERC)*, 5th European DSP, IEEE, Amsterdam, pp 1-5 DOI: 10.1109/EDE-RC.2012.6532213
30. Conner WE, Corcoran AJ (2012) Sound strategies: The 65-million-year-old battle between bats and insects. *Annu Rev Entomol* 57: 525–561.
31. Hoy RR (1992) The evolution of hearing in insects as an adaptation to predation from bats. *The Evolutionary Biology of Hearing*, eds Webster D, Popper A, Fay F (Springer-Verlag, New York), pp. 115–130.
32. Fullard JH, Yack JE (1993) The evolutionary biology of insect hearing. *Trends Ecol Evol* 8: 248–252.
33. Fullard JH (1994) Auditory changes in noctuid moths endemic to a bat-free habitat. *J Evol Biol* 7: 435–445.
34. Windmill JFC, Fullard JH, Robert D (2007) Mechanics of a 'simple' ear: Tympanal vibrations in noctuid moths. *J Exp Biol* 210 (15): 2637–2648.
35. Moir HM, Jackson JC, Windmill JFC (2013) Extremely high frequency sensitivity in a 'simple' ear. *Biol Lett* 9(4): 20130241. doi.org/10.1098/rsbl.2013.0241
36. Roeder KD (1962) The behaviour of free-flying moths in the presence of artificial ultrasonic pulses. *Anim Behav* 10: 300–304.
37. Roeder KD (1964) Aspects of the noctuid tympanic nerve response having significance in the avoidance of bats. *J Insect Physiol* 10: 529–546.
38. Agee HR (1969) Response of flying bollworm moths and other tympante moths to pulsed ultrasound. *Ann Entomol Soc Am* 62: 801–807.
39. Svensson MGE, Rydell J, Brown R (1999) Bat predation and flight timing of winter moths, *Epirrita* and *Operophtera* species (Lepidoptera, Geometridae). *Oikos* 84: 193–198.
40. Payne RS, Roeder KD, Wallman J (1966) Directional sensitivity of the ears of noctuid moths. *J Exp Biol* 44: 17–31.
41. Surlykke A (1984) Hearing in notodontid moths: a tympanic organ with a single auditory neuron. *J Exp Biol* 113: 323–335.
42. Skals N, Surlykke A (2000) Hearing and evasive behavior in the greater wax moth, *Galleria mellonella* (Pyralidae). *Physiol Entomol* 25: 354–362.
43. Lafaille M, Bimard G, Greenfield MD (2010) Risk trading in mating behavior: Forgoing anti-predator responses reduces the likelihood of missing terminal mating opportunities. *Behav Ecol Sociobiol* 64: 1485–1494.
44. Goerlitz HR, ter Hofstede HM, Zeale MRK, Jones G, Holderied MW (2010) An aerial-hawking bat uses stealth echolocation to counter moth hearing. *Curr Biol* 20: 1568–1572.
45. Greenfield MD, Weber T (2000) Evolution of ultrasonic signalling in wax moths: Discrimination of ultrasonic mating calls from bat echolocation signals and the exploitation of an anti-predator receiver bias by sexual advertisement. *Ethol Ecol Evol* 12: 259–279.
46. Greenfield MD, Hohendorf H (2009) Independence of sexual and anti-predator perceptual functions in an acoustic moth: Implications for the receiver bias mechanism in signal evolution. *Ethology* 115: 1137–1149.
47. Alem S, Koselj K, Siemers B, Greenfield MD (2011) Bat predation and the evolution of leks in acoustic moths. *Behav Ecol Sociobiol* 65: 2105–2116.
48. Alem S, Streiff R, Courtois B, Zenboudji S, Limousin D, Greenfield MD (2013) Genetic architecture of sensory exploitation: QTL mapping of female and male receiver traits in an acoustic moth. *J Evol Biol* 26: 2581–2596.
49. Nakano R, Skals N, Takanashi T, Surlykke A, Koike T, Yoshida K, Maruyama H, Tatsuki S, Ishikawa Y (2008) Moths produce extremely quiet ultrasonic courtship songs by rubbing specialized scales. *Proc Natl Acad Sci USA* 105: 11812–11817.
50. Pfuhl G, Kalinova B, Valterova I, Berg BG (2015) Simple ears – flexible behavior: Information processing in the moth auditory pathway. *Curr Zool* 61: 292–302.
51. Wright S (1932) The roles of mutation, inbreeding, crossbreeding, and selection in evolution. *Proc 6th Internatl Cong Genetics*, pp. 355–366.
52. Svensson EI, Calsbeek R (2012) *The Adaptive Landscape in Evolutionary Biology* (Oxford Univ. Press, Oxford, UK)
53. Greenfield MD, Coffelt JA (1983) Reproductive behavior of the lesser waxmoth, *Achroia grisella* (Pyralidae: Galleriinae): signaling, pair formation, male interactions, and mate guarding. *Behaviour* 84: 287–315.
54. Whiteley S (2013) *An Engineering Study into the Binsonar System of Fruitbats in the Genus Roussettus*, PhD thesis, University of Strathclyde, Glasgow, UK.
55. Yack JE, Fullard JH (2000) Ultrasonic hearing in nocturnal butterflies. *Nature* 403: 265–266.
56. Minet J, Surlykke AM (2003) Auditory and sound producing organs, *Lepidoptera, Moths and Butterflies. Volume 2: Morphology, Physiology, and Development*, ed. Kristensen NP (Walter de Gruyter, Berlin) pp. 289–323.
57. Pierce A (2007) Basic Linear Acoustics, *Springer Handbook of Acoustics*, ed. Rossing TD (Springer, New York) pp. 25–111.

1021
1022
1023
1024
1025
1026
1027
1028
1029
1030
1031
1032
1033
1034
1035
1036
1037
1038
1039
1040
1041
1042
1043
1044
1045
1046
1047
1048
1049
1050
1051
1052
1053
1054
1055
1056
1057
1058
1059
1060
1061
1062
1063
1064
1065
1066
1067
1068
1069
1070
1071
1072
1073
1074
1075
1076
1077
1078
1079
1080
1081
1082
1083
1084
1085
1086
1087
1088