

Manuscript Number: JSAMS-D-14-00594R1

Title: Equating accelerometer estimates among youth: the Rosetta Stone 2

Article Type: Original Research

Keywords: cutpoints, MVPA, measurement, policy, public health, children

Corresponding Author: Mr. Keith Brazendale, M.S.

Corresponding Author's Institution: University of South Carolina

First Author: Keith Brazendale, M.S.

Order of Authors: Keith Brazendale, M.S.; Michael W Beets; Daniel B Bornstein; Justin B Moore; Russell R Pate; Robert G Weaver; Ryan S Falck; Jessica L Chandler; Lars B Andersen; Sigmund A Anderssen; Greet Cardon; Ashley Cooper; Rachel Davey; Karsten Froberg; Pedro C Hallal; Kathleen F Janz; Katarzyna Kordas; Susi Kriemler; Jardena J Pruder; John J Reilly; Jo Salmon; Luis B Sardinha; Anna Timperio; Esther M van Sluijs

Abstract: Objectives: Different accelerometer cutpoints used by different researchers often yields vastly different estimates of moderate-to-vigorous intensity physical activity (MVPA). This is recognized as cutpoint non-equivalence (CNE), which reduces the ability to accurately compare youth MVPA across studies. The objective of this research is to develop a cutpoint conversion system that standardizes minutes of MVPA for six different sets of published cutpoints.

Design: Secondary data analysis

Methods: Data from the International Children's Accelerometer Database (ICAD; Spring 2014) consisting of 43,112 Actigraph accelerometer data files from 21 worldwide studies (children 3-18 years, 61.5% female) were used to develop prediction equations for six sets of published cutpoints. Linear and non-linear modeling, using a leave one out cross-validation technique, was employed to develop equations to convert MVPA from one set of cutpoints into another. Bland Altman plots illustrate the agreement between actual MVPA and predicted MVPA values.

Results: Across the total sample, mean MVPA ranged from 29.7 MVPA min.d-1 (Puyau) to 126.1 MVPA min.d-1 (Freedson 3 METs). Across conversion equations, median absolute percent error was 12.6% (range: 1.3 to 30.1) and the proportion of variance explained ranged from 66.7% to 99.8%. Mean difference for the best performing prediction equation (VC from EV) was -0.110 min.d-1 (limits of agreement (LOA), -2.623 to 2.402). The mean difference for the worst performing prediction equation (FR3 from PY) was 34.76 min.d-1 (LOA, -60.392 to 129.910).

Conclusions: For six different sets of cutpoints, the use of this equating system can assist individuals attempting to synthesize the growing body of literature on Actigraph, accelerometry-derived MVPA.



Department of Exercise Science  
University of South Carolina  
921 Assembly Street  
Columbia, SC 29208  
USA

9/30/2014

**Attn:** Gregory Kolt, Ph.D.  
Editor-in-Chief,  
Journal of Science and Medicine in Sport

Dear Dr. Kolt,

We would like to have the following original research article titled **‘Equating accelerometer estimates among youth: the Rosetta Stone 2’** to be considered for publication in the Journal of Science and Medicine in Sport under the sub-discipline physical activity and health. We believe this research holds great value and application to the field of physical activity and public health in youth.

The manuscript is a follow-up to the research article titled **‘Equating accelerometer estimates of moderate-to-vigorous physical activity: In search of the Rosetta Stone’** published in your journal, Volume 14, Issue 5, September, 2011. In this, prediction equations were developed for synthesizing accelerometer-derived physical activity estimates of pre-school children. This follow-up manuscript develops prediction equations from a larger sample of children (>30,000) across 10 countries, for children and adolescents (3-18 years) using 6 commonly employed Actigraph accelerometer cutpoints. We believe this to be a worthwhile procedure as “cutpoint non-equivalence” continues to burden the physical activity measurement field, and converting activity estimates into the same set of cutpoints for evaluation purposes allows practitioners, policy-makers, and researchers to interpret the abundance of evidence on physical activity levels of populations from a common standpoint.

The attached manuscript has been submitted solely to this journal, and the findings have not been previously published, posted online, or are under consideration from another journal. As the corresponding/first author on this project, I had full access to all aspects of the research and writing process, and take full responsibility for the paper.

The authors declare that there are no conflicts of interest and no external financial support. I would like to thank you and your editorial staff for taking the time in reviewing our manuscript.

Yours sincerely,

A handwritten signature in black ink, appearing to read "Keith Brazendale".

Keith Brazendale, M.S.  
Department of Exercise Science  
Arnold School of Public Health  
University of South Carolina  
Columbia, SC 29201  
PH: 803-317-2527  
[Email: brazendk@email.sc.edu](mailto:brazendk@email.sc.edu)

### Equating Accelerometer Estimates Among Youth: the Rosetta Stone 2

*The authors would like to thank both reviewers for taking the time to consider this manuscript and appreciate the constructive feedback. The authors would also like to express their appreciation for the support given to the manuscript regarding its contribution to the field of physical activity measurement. In consideration of the comments from both reviewers, we believe the subsequent additions have strengthened the manuscript considerably.*

#### **Reviewer 1 comments**

1- First, how did the authors take into account the potential effect of seasonality in physical activity data collected in the framework of ICAD? In other words, because data from the different countries involved in ICAD may not be collected at the same time, perhaps there are some internal differences to be considered?

*The purpose of this research was to develop a cutpoint conversion system that standardizes minutes of MVPA from a large and diverse sample. The authors view any effect of seasonality as an unmeasured confounder, which would be equally distributed when calculating the mean MVPA min/day from all 21 studies (See table 1.) Secondly, we believe that internal differences that may exist across the different studies can be advantageous to the credibility of the prediction equations generated in terms of their widespread use (i.e. international application), as they are created on a host of conditions as opposed to one setting and/or set of conditions.*

2- Second, with the available data, it is possible to evaluate the effect of the reintegration procedure on the results given by the conversion equation. I would suggest that the authors ask for this information in order to address this issue. It may be a real added value of the study. May be there is no effect of the reintegration on the application of the conversion system; but this should be proven and the current manuscript should be used to solve this important issue.

*The authors believe that this is a worthwhile pursuit; however, after communication with the ICAD steering committee (e-mail 11/17/2014, 11/24/2014 and 12/02/2014) access to the raw accelerometer data files for each study is not possible.*

**“... at present we do not have the necessary permission from the contributors of data to give out raw data.” (Member of ICAD Steering committee).**

*However, of the 21 studies, 14 used 60 second epochs, with the remainder employing either 5 (2 studies), 10, 15 (3 studies), or 30 second epoch. In order to explore if reintegration had any impact, the authors created a dummy variable (0 – 60 second epoch, 1 – Other) and re-ran the analysis. There were no fixed effects when reintegration was taken in to consideration, therefore this was not considered in the final models. However, we agree with reviewer 1 that this must be explored further and have addressed this issue accordingly in the manuscript. **(Discussion/limitations: Page 10-Line 182)**. Amendments have also been made in the **methods and results** sections.*

#### **Methods: Page7- Line 106**

*“Due to the nature of the dataset, access to raw accelerometer count data were not available. However, an additional analysis was run to explore if any fixed effects existed between studies that collected data using 60 second epochs (n=14), and studies using shorter epochs (E.g. 5-30 second epochs, n=7).”*

#### **Results: Page8- Line 137**

*“Additionally, there were no fixed effects between studies that originally used 60 second epochs, and those studies collecting data in shorter epochs, therefore, this was not considered further in any of the models.”*

### **Discussion/Limitation: Page 10- Line 190**

“Although an additional analysis confirmed no fixed effects existed between studies that collected data using 60 second epochs and studies employing shorter epochs, the impact the reintegration procedure may hold over conversion equations is still unknown. Further investigation is required into the degree of error surrounding the formation of prediction equations from different epoch lengths, and how that may compromise the generalizability of the conversions.”

3- Finally, some cut-points used in the current study have been developed for preschoolers and should not be extended to schoolchildren and adolescents. For example, the cut-points by Pate et al and that by Van Cauwemberghe et al. Conversely, I disagree completely with the authors as they decided to ignore the cut-points provided by Mattocks et al. and Treuth et al., which should be preferred among adolescents. The reason in support to the exclusion of these cut-points is based on the study by Trost et al., which is highly debatable by itself. The fact that a number of researchers have decided to be true to this study remain unclear, since ROC analysis as well as many other probabilistic approaches are subject to debate. Especially, in ROC analysis, the selection of the classification variable and the way it is then dichotomized, are generally obscure, and may completely influence results. Thus, the authors need to exercise caution in ignoring some cut-points in favour of others. In the revised version of their manuscript; it will be a good idea to test the conversion equation by including the cut-points by Mattocks et al. and by Treuth et al., especially among adolescents. Together with this, they should avoid the use of cut-points developed for preschoolers among adolescents.

*We agree with the reviewer that the use of cut-points developed for a specific age range (e.g., preschoolers) and applying them to older (or younger) children is, technically, questionable. However, the application of cut-points, irrespective of the age range they were originally developed, is performed quite extensively in the literature. For instance, Janz et al (2002) used Freedson cutpoints (6-18yrs) to derive MVPA estimates of 4-6yr olds, while Reilly et al has consistently been using Puyau cut-points (developed on 6-16yr olds) for preschoolers (4yr olds).*

*The inclusion of all cut-points, including those that were originally excluded, is important so that all data can be converted into a single estimate of MVPA, regardless of the cut-point chosen.*

*After correspondence with some experts in the field, and from a more detailed review of the Trost et al. study (2011), the authors agree with Reviewer 1's comments and have removed the corresponding statement that supports the discontinued use of Treuth and Mattocks cutpoints (Page 10; Line179).*

*Ideally, the authors would like to include the Mattocks et al. and Treuth et al. cutpoints. In the e-mail correspondence (11/17/2014, 11/24/2014 and 12/02/2014) with the ICAD steering committee, the cutpoints for Mattocks et al. and Treuth et al. were not developed on this wave of data, and is therefore unattainable at this time. The ICAD steering committee have made it clear that new cutpoints will be made available in their next wave of data stating **“We are in the process of running the next wave of ICAD. In this run we will include all previous data and new data. If you would like ‘new’ cutpoints to appear in Wave 2 please email me and The ICAD Steering/Working group can discuss their inclusion.” (Member of ICAD Steering committee).** The authors agree that this is a limitation of the current study and has mentioned accordingly in the manuscript (Page 10; Line 179)*

“As mentioned previously, the original cutpoints provided by ICAD do not represent the entire range of cutpoints available for use in the field (e.g. Treuth<sup>30</sup>, Mattocks<sup>22</sup>), however, future iterations of the Rosetta Stone should look to include new prediction equations developed on different cutpoints than those used in this study.”

## **Reviewer 2 comments**

Page 2, Line 6: It's a little misleading to say regardless of which cut point is used. That statement implies you can use the prediction equations on any cut point derived data set which isn't true. Suggest revising this sentence.

Revised sentence (Page 2, Line 6)

*“The objective of this research is to develop a cutpoint conversion system that standardizes minutes of MVPA across six different sets of cutpoints.”*

Page 2, Line 24: The conclusion doesn't stand alone and seems a bit ambiguous. Clarify what the equating system is and that it is specific to data using certain published ActiGraph cut-points.

Revised sentence (Page 3, Line 24)

*“Across six different sets of published cutpoints, the use of this equating system can assist individuals attempting to synthesize the growing body of literature on Actigraph, accelerometry-derived MVPA.”*

Page 4, Line 37: I would be careful when using raw accelerometer data as this could be taken to mean raw acceleration data. Suggest changing to raw accelerometer count data.

Revised sentence (Page 4, Line 37)

*“Thus, even when raw accelerometer count data between or among studies are very similar...”*

Page 7, Line 11: Why did you not consider including number of wear days as a covariate? It would be wise to address the potential impact of days of wear on the accuracy/utility of these equations in the discussion section.

*We appreciate this comment; however, there is little reason to believe that the number of days an accelerometer is worn would impact the ability to convert the information collected using one set of cutpoints into another set of cutpoints. We do agree that the number of days is likely to influence the estimate of habitual physical activity, but we believe this would not influence the conversion of activity estimates.*

Page 9, Line 154: This section and the data in table 3 nicely illustrate how the equations can be used to equate MVPA between studies using different cut-points. However if one was to attempt to synthesise across studies you are still left with the issue of which cut-point to standardise to i.e. do you convert all data from X to Evenson or from Evenson to X? It would be useful for the reader to include a discussion point here elaborating on this point.

*The authors appreciate reviewer 2 bringing up this point. The authors believe that making a recommendation on the best cutpoint to standardize is inappropriate, mainly because the authors did not evaluate the validity of these cutpoints in question, therefore making any recommendation questionable. The underlying use of this conversion system is to give researchers (attempting to synthesize their findings with other research) a viable platform from which MVPA comparisons can be made. At this point, the existence of cutpoint non-equivalence (CNE) is due to researchers continuing to favor a particular cutpoint, and until a universally recommended cutpoint can be agreed upon, or validated, this is unlikely to change (See Page 10- Line 195). What we have done is offer a conversion system where researchers can take a chosen cutpoint of interest and*

*equate it to other MVPA findings from studies employing a different cutpoint. Being able to synthesize the literature in this way can provide a coherent landscape of where a population stands in terms of MVPA levels.*

Bland Altman plots: It looks like agreement is worse for individuals with >100 mins MVPA per day. Was there similar heteroscedasticity in the data for the other equations? If so this issue should be noted in the discussion section

*The authors agree with this observation. The second Bland Altman, which illustrates the worst performing equation ( $r^2 = 0.323$ ) presents a degree of heteroscedasticity. This was also observed during the other poorer-performing prediction equations. The authors have noted this evidence of heteroscedasticity in the discussion section and suggest readers take caution when using some of these prediction equations.*

Added sentence below (Page 9, Line 165)

*“It must be noted that a degree of heteroscedasticity can be observed in Figure 1b, where the proportion of variance explained was low (>33%). Rosetta Stone users must interpret their MVPA predictions with caution when using some of the ‘poorer performing’ prediction equations ( $R^2 = <60\%$ ).”*

<b>Title:</b>	Equating accelerometer estimates among youth: the Rosetta Stone 2
<b>Authors:</b>	Keith Brazendale, M.S. <sup>1</sup> , Michael W. Beets, Ph.D. <sup>1</sup> , Daniel B. Bornstein, Ph.D. <sup>1</sup> , Justin B. Moore, Ph.D. <sup>2</sup> , Russell R. Pate, Ph.D. <sup>1</sup> , Robert G. Weaver, Ph.D. <sup>1</sup> , Ryan S. Falck, M.S. <sup>1</sup> , Jessica L. Chandler, M.S. <sup>1</sup> , Lars B. Andersen, Ph.D. <sup>3,4</sup> , Sigmund A. Anderssen, Ph.D. <sup>4</sup> , Greet Cardon, Ph.D. <sup>5</sup> , Ashley Cooper, Ph.D. <sup>6</sup> , Rachel Davey, Ph.D. <sup>7</sup> , Karsten Froberg, Ph.D. <sup>3</sup> , Pedro C. Hallal, Ph.D. <sup>8</sup> , Kathleen F. Janz, Ph.D. <sup>9</sup> , Katarzyna Kordas, Ph.D. <sup>6</sup> , Susi Kriemler, Ph.D. <sup>10</sup> , Jardena J. Puder, M.D. <sup>11</sup> , John J. Reilly, Ph.D. <sup>12</sup> , Jo Salmon, Ph.D. <sup>13</sup> , Luis B. Sardinha, Ph.D. <sup>14</sup> , Anna Timperio, Ph.D. <sup>13</sup> , Esther MF van Sluijs, Ph.D. <sup>15</sup>  On behalf of the International Children's Accelerometry Database (ICAD) Collaborators
<b>Affiliations:</b>	<sup>1</sup> University of South Carolina, Department of Exercise Science, Columbia, South Carolina, US. <sup>2</sup> University of South Carolina, Department of Health Promotion, Education, and Behavior, Columbia, South Carolina, US. <sup>3</sup> University of Southern Denmark, Department of Sport Science and Clinical Biomechanics, Odense, Denmark. <sup>4</sup> Norwegian School of Sport Science, Oslo, Norway. <sup>5</sup> Ghent University, Department of Movement and Sports Sciences, Belgium. <sup>6</sup> University of Bristol, Centre for Exercise, Nutrition and Health Sciences/School of Social and Community Medicine, Bristol, UK. <sup>7</sup> University of Canberra, Centre for Research and Action in Public Health, Canberra, Australia. <sup>8</sup> Federal University of Pelotas, Pelotas, Brazil. <sup>9</sup> University of Iowa, Department of Health and Human Physiology, Iowa City, Iowa, US. <sup>10</sup> University of Zürich, Epidemiology, Biostatistics and Public Health Institute, Zürich, Switzerland. <sup>11</sup> University of Lausanne, Service of Endocrinology, Diabetes and Metabolism, Lausanne, Switzerland. <sup>12</sup> University of Glasgow, Division of Developmental Medicine, Glasgow, UK. <sup>13</sup> Deakin University, School of Exercise and Nutrition Sciences/Centre for Physical Activity and Nutrition Research, Melbourne, Australia. <sup>14</sup> Technical University of Lisbon, Faculty of Human Movement, Lisbon, Portugal. <sup>15</sup> University of Cambridge, MRC Epidemiology Unit, Cambridge, UK.
<b>Corresponding Author:</b>	Keith Brazendale <a href="mailto:brazendk@email.sc.edu">brazendk@email.sc.edu</a>
<b>Word Count:</b> Abstract Manuscript	250 2239
<b>Tables:</b>	2 (Additional Table 3 added as a supplementary file)
<b>Figures:</b>	1

**Title:** Equating accelerometer estimates among youth: the Rosetta Stone 2



1 **Abstract**

2 **Objectives:** Different accelerometer cutpoints used by different researchers often yields vastly different  
3 estimates of moderate-to-vigorous intensity physical activity (MVPA). This is recognized as cutpoint  
4 non-equivalence (CNE), which reduces the ability to accurately compare youth MVPA across studies.  
5 The objective of this research is to develop a cutpoint conversion system that standardizes minutes of  
6 MVPA for six different sets of published cutpoints.

7  
8 **Design:** Secondary data analysis

9  
10 **Methods:** Data from the International Children's Accelerometer Database (ICAD; Spring 2014)  
11 consisting of 43,112 Actigraph accelerometer data files from 21 worldwide studies (children 3-18 years,  
12 61.5% female) were used to develop prediction equations for six sets of published cutpoints. Linear and  
13 non-linear modeling, using a leave one out cross-validation technique, was employed to develop  
14 equations to convert MVPA from one set of cutpoints into another. Bland Altman plots illustrate the  
15 agreement between actual MVPA and predicted MVPA values.

16  
17 **Results:** Across the total sample, mean MVPA ranged from 29.7 MVPA min.d<sup>-1</sup> (Puyau) to 126.1 MVPA  
18 min.d<sup>-1</sup> (Freedson 3 METs). Across conversion equations, median absolute percent error was 12.6%  
19 (range: 1.3 to 30.1) and the proportion of variance explained ranged from 66.7% to 99.8%. Mean  
20 difference for the best performing prediction equation (VC from EV) was -0.110 min.d<sup>-1</sup> (limits of  
21 agreement (LOA), -2.623 to 2.402). The mean difference for the worst performing prediction equation  
22 (FR3 from PY) was 34.76 min.d<sup>-1</sup> (LOA, -60.392 to 129.910).

23

24 **Conclusions:** For six different sets of published cutpoints, the use of this equating system can assist  
25 individuals attempting to synthesize the growing body of literature on Actigraph, accelerometry-derived  
26 MVPA.

27

28 **Keywords:** cutpoints, MVPA, measurement, policy, public health, children

29

30

31

## Introduction

32

33

34

35

36

37

38

39

40

41

Accelerometers are widely used for assessing free living physical activity levels of children and adolescents<sup>1-3</sup>. The data typically derived from accelerometers, activity counts, are most commonly processed using a set of calibrated and cross-validated cutpoints<sup>1,4</sup>. The use of cutpoints allows for the data to be distilled into categories of intensity ranging from sedentary to vigorous intensity, with these commonly reported as minutes per day ( $\text{min}\cdot\text{d}^{-1}$ )<sup>5</sup>. Over the past decade, different sets of cutpoints have been developed for use in studies investigating the activity levels of youth (<18yrs)<sup>6-8</sup>. Thus, even when **raw accelerometer count data** between or among studies are very similar, the application of different cutpoints for estimating minutes of moderate-to-vigorous physical activity (MVPA) to those raw data offer vastly different estimates of MVPA<sup>9</sup>. Unfortunately, even though studies report physical activity in minutes per day, direct comparison cannot be made across studies employing different sets of cutpoints.

42

43

44

45

46

47

48

49

50

51

52

53

Put simply, activity intensity estimates can differ greatly between studies investigating the same population solely because of the cutpoints chosen by the researchers<sup>10,11</sup>. Bornstein et al., (2011) defined this problem as ‘cutpoint non-equivalence’ (CNE)<sup>12</sup>. The overarching limitation inherent in CNE is that direct comparisons across studies measuring physical activity via accelerometry cannot be made since the outcome metric ( $\text{min}\cdot\text{d}^{-1}$ ) is not equivalent, even though expressed in the same units. Thus, attempts at synthesizing a body of literature, disregarding CNE, leads to distorted and biased conclusions (e.g., combining studies using overly conservative cutpoints with studies using overly generous cutpoints). An example of this issue can be found in the recent Institute of Medicine report “Early Childhood Obesity Prevention Policies” where physical activity recommendations were made for preschool-age children by evaluating studies that provide different estimates of physical activity based on different cutpoints<sup>13</sup>. This scenario substantially impacts the soundness of public health policies and initiatives.

54 A solution to CNE has been proposed by Bornstein et al. (2011) who employed secondary data to  
55 devise a conversion system to translate reported MVPA estimates from one set of cutpoints into another  
56 <sup>12</sup>. Within the findings, originally disparate estimates of MVPA were able to be compared by using a  
57 conversion equation. For instance, comparing three studies that used three different sets of cutpoints  
58 reporting 91.2 min•d<sup>-1</sup>, 55.2 min•d<sup>-1</sup>, and 20.8 min•d<sup>-1</sup> of MVPA was problematic. But after applying the  
59 conversion equations the estimates were similar, 59.2 min•d<sup>-1</sup>, 55.2 min•d<sup>-1</sup>, and 58.0 min•d<sup>-1</sup> of MVPA <sup>12</sup>,  
60 and, therefore, logical evaluations could be drawn on daily MVPA between the three studies. Converting  
61 activity estimates into the same set of cutpoints for evaluation purposes allows practitioners, policy-  
62 makers, and researchers to interpret the abundance of evidence on physical activity levels of populations  
63 from a common standpoint.

64 Currently, there are no universally accepted cutpoints, and with the different methodological  
65 approaches to calibration studies <sup>14, 15</sup>, discrepancies in MVPA estimates between studies (i.e. CNE) will  
66 continue. Bornstein et al. (2011) provided a solution to CNE for preschool aged children, therefore, the  
67 purpose of this study is to illustrate the use of a conversion system that will translate MVPA (min•d<sup>-1</sup>)  
68 produced by one set of cutpoints to an MVPA (min•d<sup>-1</sup>) estimate using a different set of cutpoints for  
69 children and adolescents.

70

71

72

## Methods

73 This is a secondary data analysis using existing pooled data from the International Children's  
74 Accelerometer Database (ICAD, <http://www.mrc-epid.cam.ac.uk/research/studies/icad/>; Spring 2014).  
75 This database was constructed to gather data on objectively measured physical activity of youth from  
76 around the world <sup>16, 17</sup>. **All individual studies went through their own ethics committee approval.** The  
77 aims, design, study selection, inclusion criteria, and methods of the ICAD project have been described in

78 detail elsewhere<sup>17</sup>. In short, a PubMed search and personal contacts resulted in 24 studies worldwide  
79 being approached and invited to contribute data. Inclusion criteria consisted of studies that used a version  
80 of the Actigraph accelerometer (Actigraph LLC, Pensacola, FL) in children 3-18 years with a sample size  
81 greater than 400<sup>17</sup>. **After identification, the principal investigator was contacted, and upon agreement,**  
82 **formal data-sharing arrangements were established. All partners (i.e. contributors of data) consulted with**  
83 **their respective research boards to obtain consent before contributing their data to the ICAD.** In total, 21  
84 studies conducted between 1998 and 2009 from 10 countries contributed data to the ICAD. The majority  
85 of the studies were located in Europe (N=14), with the United States, Brazil, and Australia contributing 4  
86 studies, 1 study, and 2 studies, respectively<sup>17</sup>. **All individual data within the pooled data set were**  
87 **allocated a unique and non-identifiable participant ID to ensure anonymity of data.**

88 For the present analysis, data from all 21 studies on children and adolescents aged between 3-18  
89 years were used. These data are comprised of 44,454 viable baseline and repeated measures files from a  
90 total of 31,976 participants (female 62.4%). A comprehensive description of the assessment of physical  
91 activity is available elsewhere<sup>17</sup>. Across all studies, Actigraph accelerometers were waist-mounted<sup>17</sup>, and  
92 all children with a minimum of 1 day, with at least 500 minutes of measured accelerometer wear time  
93 were included. The ICAD database epochs varied from 5 seconds to 60 seconds, therefore reintegrated  
94 60-second epochs formed the pooled ICAD database<sup>17</sup>. Although the reintegration procedure may  
95 slightly over or underestimate MVPA<sup>18</sup>, it is commonly accepted when handling different epoch lengths  
96<sup>19, 20</sup>.

97 In an effort to provide researchers with physical activity data derived from a range of Actigraph  
98 cutpoints, the ICAD distilled intensity categories (e.g. sedentary, light, moderate, vigorous) from six  
99 commonly used Actigraph cutpoints<sup>17, 21</sup>. After receiving the ICAD dataset, a MVPA variable was  
100 created for each of the six cutpoints. A breakdown of these cutpoints, along with their corresponding  
101 MVPA counts-per-minute can be found in Table 1. The cutpoints used by ICAD, and for analysis in this  
102 study, were Pate et al. (PT)<sup>7</sup>, Puyau et al. (PY)<sup>8</sup>, Freedson equation et al., where the MVPA threshold

103 can be either 3 METs (FR3) or 4 METs (FR4)<sup>22-24</sup>, Van Cauwenberghe et al. (VC)<sup>25</sup>, and Evenson et al.  
 104 (EV)<sup>26</sup>.

105 The development and validation of the prediction equations followed a similar procedure  
 106 previously used by Bornstein et al. (2011)<sup>12</sup>. Linear and non-linear regression models, accounting for  
 107 valid days and repeated measures on a single participant (i.e. longitudinal data) were used to develop the  
 108 conversion equations. Due to the nature of the dataset, access to raw accelerometer count data were not  
 109 available. However, an additional analysis was run to explore if any fixed effects existed between studies  
 110 that collected data using 60 second epochs (n=14), and studies employing shorter epochs (E.g. 5-30  
 111 second epochs, n=7). A ‘leave one out’ cross-validation procedure was employed to assess how well each  
 112 equation performed<sup>27</sup>. In this procedure, each study assumed the role of the validation sample and the  
 113 remaining 20 studies were used as the derivation sample. This procedure was repeated 21 times until each  
 114 study had served as the validation sample.

115 The development of the prediction equations included linear and non-linear terms where  
 116 appropriate. Furthermore, key covariates were incorporated into the equations where these added  
 117 significantly to the model including: age (years); gender; and wear time (average wear time per day in  
 118 minutes). Inclusion criteria for these variables were contingent upon a significant increase in the  
 119 proportion of variance explained (R<sup>2</sup>), and a reduction in the average error and absolute percent error.  
 120 Average error (a) and absolute percent error (b) were calculated using the following formulae:

$$121 \quad (a) \quad \sqrt{\left[ \frac{\sum (Y - Y_{prime})^2}{(N - 1)} \right]} \qquad (b) \quad [(Y - Y_{prime})/Y] \times 100$$

122 Above, “Y” is the actual MVPA value and “Y<sub>prime</sub>” is the predicted MVPA value from the generated  
 123 equation<sup>12</sup>. All equations containing significant demographic variables (e.g. age, gender, wear time) were  
 124 reported. Finally, Bland Altman plots<sup>28</sup> were used to illustrate the agreement between the actual MVPA  
 125 value and the predicted MVPA values. Limits of agreement were calculated as [  $\bar{m} \pm (2 \times \bar{s})$  ] where “ $\bar{m}$ ”

126 is the mean difference between the actual and predicted MVPA, and “ $s$ ” is the mean standard deviation <sup>28</sup>.

127 All statistical analyses were performed using Stata (v.12.1, College Station, TX).

128

129

## Results

130 The final ICAD sample consisted of 43,112 files, representing 31,113 children (female 61.5%)  
 131 between the ages of 3-18 years. Table 1 displays the average MVPA in minutes per day ( $\text{min.d}^{-1}$ ) for the  
 132 six sets of cutpoints for the entire sample. Across the six cutpoints, MVPA estimates were from PY 29.65  
 133  $\text{min.d}^{-1}$  ( $\pm 21.38$ ), VC 47.81  $\text{min.d}^{-1}$  ( $\pm 28.52$ ), EV 49.38  $\text{min.d}^{-1}$  ( $\pm 29.17$ ), FR4 64.87  $\text{min.d}^{-1}$  ( $\pm 47.02$ ),  
 134 PT 77.55  $\text{min.d}^{-1}$  ( $\pm 38.49$ ), and FR3 126.12  $\text{min.d}^{-1}$  ( $\pm 75.82$ ). Prediction models with the corresponding  
 135 proportion of variance explained, average error, and absolute percent error are displayed in Table 2. In  
 136 total, 61 prediction equations were generated. With the exception of two of these equations (VC from EV,  
 137 and EV from VC), age contributed significantly to the models, while gender was included in three models  
 138 (VC from FR3, EV from FR3, and PY from FR3). The third covariate under consideration, wear time,  
 139 did not contribute significantly to any of the models. **Additionally, there were no fixed effects between**  
 140 **studies that originally used 60 second epochs, and those studies collecting data in shorter epochs,**  
 141 **therefore, this was not considered further in any of the models.** Using the best model from each possible  
 142 conversion, the mean absolute percent error was 12.6%, with 1.3% and 30.1% representing the minimum  
 143 (VC from EV) and maximum (PY from FR3) percent error, respectively. The proportion of variance  
 144 explained ranged from 66.7% (FR3 from PY) to 99.8% (VC from EV). Figures 1 (a) and (b) illustrates the  
 145 best (VC from EV) and the worst (FR3 from PY) prediction equations in the form of Bland Altman plots.  
 146 The mean difference for VC from EV was  $-0.110 \text{ min.d}^{-1}$ , with  $-2.623$  to  $2.402$  representing the lower and  
 147 upper bounds of the limits of agreement (LOA), respectively. The mean difference for FR3 from PY was  
 148  $34.76 \text{ min.d}^{-1}$  (LOA  $-60.392$  to  $129.910$ ).

149

150

## Discussion

151

152

153

154

155

156

The use of accelerometers provides researchers with a practical, reliable, and valid tool to objectively measure physical activity levels of children and adolescents. Despite these benefits, the widespread use of accelerometers in the field of physical activity measurement has continued to be burdened by CNE<sup>4, 11, 29</sup>. The use of different cutpoints has resulted in contrasting estimates of physical activity for children and adolescents, thereby, significantly limiting comparisons of the estimates of physical activity intensity and the prevalence of meeting physical activity guidelines<sup>9, 15, 29</sup>.

157

158

159

160

161

162

163

164

165

166

167

168

169

170

171

172

This study has built on the concept of cutpoint conversion first demonstrated by Bornstein et al. (2011) for preschool-aged children, and provides a solution to the problem of CNE for children and adolescents aged 3-to-18 years. Table 3 (supplementary table) demonstrates the utility and accuracy of this equating system by using previous research that has published MVPA estimates ( $\text{min.d}^{-1}$ ) on two or more cutpoints coinciding with the cutpoints used in this study<sup>10, 25, 29</sup>. Recognizing the problem of CNE, Guinhouya et al. examined MVPA of children aged 9 years using FR3 and PY cutpoints<sup>10</sup>. Of concern, was the difference in the estimate of MVPA between the two sets of cutpoints ( $113 \text{ MVPA min.d}^{-1}$ )<sup>10</sup>. Using the specific conversion equation developed herein for these two cutpoints, the difference is reduced to  $7 \text{ MVPA min.d}^{-1}$ . In comparison, converting FR3 MVPA in to PY MVPA has taken MVPA estimates from uninformative ( $141 \text{ MVPA min.d}^{-1}$  vs.  $28 \text{ MVPA min.d}^{-1}$ )<sup>10</sup>, to coherence ( $21 \text{ MVPA min.d}^{-1}$  vs.  $28 \text{ MVPA min.d}^{-1}$ ). **It must be noted that a degree of heteroscedasticity can be observed in Figure 1b, where the proportion of variance explained was low (>33%). Rosetta Stone users must interpret their MVPA predictions with caution when using some of the 'poorer performing' prediction equations ( $R^2 = <60\%$ ).** Ultimately, these conversion equations present a practical solution to synthesizing the growing body of literature that reports estimates of youth MVPA using accelerometers to guide public health policy for children and adolescent physical activity recommendations.



173 A major strength of this study is the diversity and sample size of the data used to derive the  
174 conversion equations. The ICAD sample consisted of information on over 30,000 children and  
175 adolescents, from 10 different countries, representing 21 studies using waist-mounted Actigraph  
176 accelerometers<sup>17</sup>. Although the conversion equations are limited to the six cutpoints used for this study,  
177 the cutpoints employed herein are commonly used within the physical activity literature<sup>21</sup>, therefore  
178 providing widespread utility of the prediction equations for future research to evaluate their findings.  
179 Lastly, the equating system is relatively simple to use and requires commonly published and accessible  
180 information (e.g. MVPA min.d<sup>-1</sup>, age, gender).

181 On the other hand, there are limitations to this study that need to be considered. **As mentioned**  
182 **previously, the original cutpoints provided by ICAD do not represent the entire range of cutpoints**  
183 **available for use in the field (e.g. Treuth<sup>30</sup>, Mattocks<sup>22</sup>), however, future iterations of the Rosetta Stone**  
184 **should look to include new prediction equations developed on different cutpoints than those employed in**  
185 **this study.** It must be noted that the cutpoints employed in this analysis were developed with some  
186 amount of error, and the prediction equations generated within this study bring an additional degree of  
187 error. However, while this error exists, one must consider what is worse - comparing estimates of MVPA  
188 that indicate a difference of over 100 min•d<sup>-1</sup> between cut points or 7 min•d<sup>-1</sup>? Also, the 21 studies  
189 forming the ICAD database reported epochs ranging from 5 seconds to 60 seconds. The ICAD database  
190 reintegrated seven of the 21 studies into 60 second epochs<sup>17</sup>, and research has shown how MVPA data  
191 collected in shorter epochs (e.g. 5 seconds) can result in higher estimates of MVPA compared to MVPA  
192 data collected in longer epochs<sup>18</sup>. **Although an additional analysis confirmed no fixed effects existed**  
193 **between studies that collected data using 60 second epochs and studies employing shorter epochs, the**  
194 **impact the reintegration procedure may hold over conversion equations is still unknown. Further**  
195 **investigation is required into the degree of error surrounding the formation of prediction equations from**  
196 **different epoch lengths, and how that may compromise the generalizability of the conversions.**

197 **Conclusion**

198 In summary, this study proposes a solution to CNE by illustrating the use of an equating system  
199 that demonstrates acceptable accuracy allowing for comparisons across six different sets of cutpoints used  
200 for measuring MVPA in children and adolescents. **Until a universally accepted cutpoint can be agreed,**  
201 **researchers will continue to select different cutpoints, and disparities will continue among studies**  
202 **evaluating physical activity levels of similar populations.** This considerably impedes efforts to synthesize  
203 the growing body of literature on children and adolescents physical activity behavior. Utilizing the  
204 equating system gives researchers, practitioners and policymakers the capacity to “paint a better picture”  
205 of physical activity levels through which relevant policies can be developed and evaluated.

206

207 **Practical Implications**

- 208 - The prediction equations developed within this study allow practitioners to synthesize  
209 accelerometer-derived MVPA estimates of children and adolescents between the ages of 3 and 18  
210 years across six commonly used Actigraph cutpoints.
- 211 - Converting accelerometer-derived MVPA estimates into the same set of cutpoints for evaluation  
212 purposes allows practitioners, policy-makers, and researchers to interpret the abundance of  
213 evidence on physical activity levels of populations (e.g. youth of different ages) from a common  
214 standpoint.
- 215 - With a coherent understanding of the population prevalence of physical activity, policy-makers  
216 can evaluate, and potentially reconsider, the realism of policies and standards pertaining to  
217 children and adolescents physical activity.

218

219

220  
221  
222  
223  
224  
225  
226  
227  
228  
229  
230  
231  
232  
233  
234  
235  
236  
237  
238

## Acknowledgements

We would like to thank all participants of the original studies that contributed data to ICAD. No financial assistance was provided for the secondary data analysis of this project. The pooling of the data was funded through a grant from the National Prevention Research Initiative (Grant Number: G0701877) (<http://www.mrc.ac.uk/Ourresearch/Resourceservices/NPRI/index.htm>). The funding partners relevant to this award are: British Heart Foundation; Cancer Research UK; Department of Health; Diabetes UK; Economic and Social Research Council; Medical Research Council; Research and Development Office for the Northern Ireland Health and Social Services; Chief Scientist Office; Scottish Executive Health Department; The Stroke Association; Welsh Assembly Government and World Cancer Research Fund. This work was additionally supported by the Medical Research Council [MC\_UU\_12015/3; MC\_UU\_12015/7], Bristol University, Loughborough University and Norwegian School of Sport Sciences. We also gratefully acknowledge the contribution of Professor Chris Riddoch, Professor Ken Judge and Dr Pippa Griew to the development of ICAD. Jo Salmon is supported by an Australian National Health & Medical Research Council Principal Research Fellowship (APP1026216); Anna Timperio is supported by a National Heart Foundation of Australia Future Leader Fellowship (Award ID 100046).

239

**ICAD Collaborators**

240 The ICAD Collaborators include: Prof LB Andersen, University of Southern Denmark, Odense, Denmark  
241 (Copenhagen School Child Intervention Study (CoSCIS)); Prof S Anderssen, Norwegian School for Sport  
242 Science, Oslo, Norway (European Youth Heart Study (EYHS), Norway); Prof G Cardon, Department of  
243 Movement and Sports Sciences, Ghent University, Belgium (Belgium Pre-School Study); Centers for  
244 Disease Control and Prevention (CDC), National Center for Health Statistics (NCHS), Hyattsville, MD  
245 USA (National Health and Nutrition Examination Survey (NHANES)); Prof A Cooper, Centre for  
246 Exercise, Nutrition and Health Sciences, University of Bristol, UK (Personal and Environmental  
247 Associations with Children's Health (PEACH)); Dr R Davey, Centre for Research and Action in Public  
248 Health, University of Canberra, Australia (Children's Health and Activity Monitoring for Schools  
249 (CHAMPS)); Prof U Ekelund, Norwegian School of Sport Sciences, Oslo, Norway & MRC  
250 Epidemiology Unit, University of Cambridge, UK; Dr DW Esliger, School of Sports, Exercise and Health  
251 Sciences, Loughborough University, UK; Dr K Froberg, University of Southern Denmark, Odense,  
252 Denmark (European Youth Heart Study (EYHS), Denmark); Dr P Hallal, Postgraduate Program in  
253 Epidemiology, Federal University of Pelotas, Brazil (1993 Pelotas Birth Cohort); Prof KF Janz,  
254 Department of Health and Human Physiology, Department of Epidemiology, University of Iowa, Iowa  
255 City, US (Iowa Bone Development Study); Dr K Kordas, School of Social and Community Medicine,  
256 University of Bristol, UK (Avon Longitudinal Study of Parents and Children (ALSPAC)); Dr S Kriemler,  
257 Institute of Social and Preventive Medicine, University of Zürich, Switzerland (Kinder-Sportstudie  
258 (KISS)); Dr A Page, Centre for Exercise, Nutrition and Health Sciences, University of Bristol, UK; Prof  
259 R Pate, Department of Exercise Science, University of South Carolina, Columbia, US (Physical Activity  
260 in Pre-school Children (CHAMPS-US) and Project Trial of Activity for Adolescent Girls (Project  
261 TAAG)); Dr JJ Puder, Service of Endocrinology, Diabetes and Metabolism, Centre Hospitalier  
262 Universitaire Vaudois, University of Lausanne, Switzerland (Ballabeina Study); Prof J Reilly, Physical  
263 Activity for Health Group, School of Psychological Sciences and Health, University of Strathclyde,  
264 Glasgow, UK (Movement and Activity Glasgow Intervention in Children (MAGIC)); Prof. J Salmon,  
265 Centre for Physical Activity and Nutrition Research, Deakin University, Melbourne, Australia (Children  
266 Living in Active Neighbourhoods (CLAN)); Prof LB Sardinha, Exercise and Health Laboratory, Faculty of  
267 Human Movement, Technical University of Lisbon, Portugal (European Youth Heart Study (EYHS),  
268 Portugal); Dr LB Sherar, School of Sports, Exercise and Health Sciences, Loughborough University, UK;  
269 Dr A Timperio, Centre for Physical Activity and Nutrition Research, Deakin University Melbourne,  
270 Australia (Healthy Eating and Play Study (HEAPS)); Dr EMF van Sluijs, MRC Epidemiology Unit,  
271 University of Cambridge, UK (Sport, Physical activity and Eating behaviour: Environmental  
272 Determinants in Young people (SPEEDY)).

273

274

## References

- 275 1. Reilly JJ, Penpraze V, Hislop J, et al. Objective measurement of physical activity and sedentary  
276 behaviour: review with new data. *Arch Dis Child*. 2008; 93(7):614-619.
- 277 2. Cliff DP, Okely AD. Comparison of two sets of accelerometer cut-off points for calculating  
278 moderate-to-vigorous physical activity in young children. *J Phys Act Health*. 2007; 4(4):509.
- 279 3. Trost SG, McIver KL, Pate RR. Conducting accelerometer-based activity assessments in field-  
280 based research. *Med Sci Sport Exerc*. 2005; 37(11 Suppl):S531-543.
- 281 4. Kim Y, Beets MW, Welk GJ. Everything you wanted to know about selecting the “right”  
282 Actigraph accelerometer cut-points for youth, but...: a systematic review. *J Sci Med Sport*. 2012;  
283 15(4):311-321.
- 284 5. Trost SG. State of the art reviews: measurement of physical activity in children and adolescents.  
285 *AM J Lifestyle Med*. 2007; 1(4):299-314.
- 286 6. Freedson PS, Melanson E, Sirard J. Calibration of the Computer Science and Applications, Inc.  
287 accelerometer. *Med Sci Sport Exerc*. 1998; 30(5):777-781.
- 288 7. Pate RR, Almeida MJ, McIver KL, et al. Validation and calibration of an accelerometer in  
289 preschool children. *Obesity*. 2006; 14(11):2000-2006.
- 290 8. Puyau MR, Adolph AL, Vohra FA, et al. Validation and calibration of physical activity monitors  
291 in children. *Obes Res*. 2002; 10(3):150-157.
- 292 9. Beets MW, Bornstein D, Dowda M, et al. Compliance with national guidelines for physical  
293 activity in US preschoolers: measurement and interpretation. *Pediatrics*. 2011; 127(4):658-664.
- 294 10. Guinhouya CB, Hubert H, Soubrier S, et al. Moderate-to-Vigorous Physical Activity among  
295 Children: Discrepancies in Accelerometry-Based Cut-off Points. *Obesity*. 2006; 14(5):774-777.
- 296 11. Bornstein DB, Beets MW, Byun W, et al. Accelerometer-derived physical activity levels of  
297 preschoolers: a meta-analysis. *J Sci Med Sport*. 2011; 14(6):504-511.
- 298 12. Bornstein DB, Beets MW, Byun W, et al. Equating accelerometer estimates of moderate-to-  
299 vigorous physical activity: In search of the Rosetta Stone. *J Sci Med Sport*. 2011; 14(5):404-410.
- 300 13. Birch LL, Parker L, Burns A. *Early childhood obesity prevention policies*, National Academies  
301 Press; 2011.
- 302 14. Routen AC, Upton D, Edwards MG, et al. Discrepancies in accelerometer-measured physical  
303 activity in children due to cut-point non-equivalence and placement site. *J Sport Sci*. 2012;  
304 30(12):1303-1310.
- 305 15. Trost SG, Loprinzi PD, Moore R, et al. Comparison of accelerometer cut points for predicting  
306 activity intensity in youth. *Med Sci Sport Exerc*. 2011; 43(7):1360-1368.
- 307 16. Ekelund U, Luan Ja, Sherar LB, et al. Moderate to vigorous physical activity and sedentary time  
308 and cardiometabolic risk factors in children and adolescents. *J Am Med Assoc*. 2012; 307(7):704-  
309 712.
- 310 17. Sherar LB, Griew P, Esliger DW, et al. International children's accelerometry database (ICAD):  
311 design and methods. *BMC public health*. 2011; 11(1):485.
- 312 18. Kim Y, Beets MW, Pate RR, et al. The effect of reintegrating Actigraph accelerometer counts in  
313 preschool children: Comparison using different epoch lengths. *J Sci Med Sport*. 2013; 16(2):129-  
314 134.
- 315 19. Trost SG, Rosenkranz RR, Dzewaltowski D. Physical activity levels among children attending  
316 after-school programs. *Med Sci Sport Exerc*. 2008; 40(4):622-9.
- 317 20. Nilsson A, Ekelund U, Yngve A, et al. Assessing physical activity among children with  
318 accelerometers using different time sampling intervals and placements. *Pediatr Exerc Sci*. 2002;  
319 14(1):87-96.
- 320 21. Cain KL, Sallis JF, Conway TL, et al. Using accelerometers in youth physical activity studies: a  
321 review of methods. *J Phys Act Health*. 2013; 10(3):437-450.
- 322 22. Mattocks C, Leary S, Ness A, et al. Calibration of an accelerometer during free-living activities in  
323 children. *Int J Pediatr Obes*. 2007; 2(4):218-226.

- 324 23. Trost SG, Pate RR, Freedson PS, et al. Using objective physical activity measures with youth:  
325 how many days of monitoring are needed? *Med Sci Sport Exerc.* 2000; 32(2):426-431.
- 326 24. Freedson P, Pober D, Janz K. Calibration of accelerometer output for children. *Med Sci Sport*  
327 *Exerc.* 2005; 37(11 Suppl):S523.
- 328 25. van Cauwenberghe E, Labarque V, Trost SG, et al. Calibration and comparison of accelerometer  
329 cut points in preschool children. *Int J Pediatr Obes.* 2011; 6(2-2):e582-e589.
- 330 26. Evenson KR, Catellier DJ, Gill K, et al. Calibration of two objective measures of physical activity  
331 for children. *J Sport Sci.* 2008; 26(14):1557-1565.
- 332 27. Stone M. Cross-validators choice and assessment of statistical predictions. *J R Stat Soc. Series B*  
333 *(Methodological).* 1974:111-147.
- 334 28. Martin Bland J, Altman D. Statistical methods for assessing agreement between two methods of  
335 clinical measurement. *The lancet.* 1986; 327(8476):307-310.
- 336 29. Loprinzi PD, Lee H, Cardinal BJ, et al. The relationship of actigraph accelerometer cut-points for  
337 estimating physical activity with selected health outcomes: results from NHANES 2003–06. *Res*  
338 *Quart Exercise Sport.* 2012; 83(3):422-430.
- 339 30. Treuth MS, Schmitz K, Catellier DJ, et al. Defining accelerometer thresholds for activity  
340 intensities in adolescent girls. *Med Sci Sport Exerc.* 2004; 36(7):1259.

341

342

Table 1. Accelerometer cutpoints associated with moderate-to-vigorous physical activity (MVPA) in children and adolescents aged 3–18 years.

MVPA Cutpoint	Symbol	Age (yrs.)																Mean <sup>a</sup>	SD
		3	4	5	6	7	8	9	10	11	12	13	14	15	16	17	18		
Pate et al.	PT	1680	1680	1680	1680	1680	1680	1680	1680	1680	1680	1680	1680	1680	1680	1680	1680	77.5	38.5
Puyau et al.	PY	3201	3201	3201	3201	3201	3201	3201	3201	3201	3201	3201	3201	3201	3201	3201	3201	29.7	21.4
Freedson et al. (3 METS)	FR3	369	446	527	614	706	803	906	1017	1136	1263	1400	1547	1706	1880	2068	2274	126.1	75.8
Freedson et al. (4 METS)	FR4	1090	1187	1290	1400	1515	1638	1770	1910	2059	2220	2392	2580	2781	3000	3239	3499	64.9	47
Van Cauwenberghe et al.	VC	2340	2340	2340	2340	2340	2340	2340	2340	2340	2340	2340	2340	2340	2340	2340	2340	47.8	28.5
Evenson et al.	EV	2296	2296	2296	2296	2296	2296	2296	2296	2296	2296	2296	2296	2296	2296	2296	2296	49.4	29.2

*Note:* All cut-points are presented as counts per minute (CPM).

<sup>a</sup> MVPA minutes per day (N = 43,112)

343

344



Table 2. Prediction equations to transform estimates of moderate-to-vigorous physical activity (MVPA; min.d<sup>-1</sup>) from one set of cutpoints into MVPA (min.d<sup>-1</sup>) estimated from another set of cutpoints

Accelerometer cutpoint MVPA min.d <sup>-1</sup>		Prediction Equations <sup>†</sup>				Demographics			Leave One Out Cross Validation*		
Outcome Variable <sup>a</sup>	Predictor Variable	Intercept	MVPA (min.d <sup>-1</sup> )	Squared	MVPA (min.d <sup>-1</sup> )	Square root	Age (years)	Gender <sup>b</sup>	Adjusted R <sup>2</sup>	Average Error <sup>c</sup> (min/day)	Absolute Error <sup>d</sup>
Freedson (4 MET)	Van Cauwenberghe	-4.5855	1.7206	-0.0026					0.611	34.68	30.9
	Van Cauwenberghe	118.5514	1.0465	0.0004			-9.0859		0.931	15.18	13.0
	Evenson	-2.9598	1.4872	-0.0017					0.618	34.30	30.6
	Evenson	117.2174	1.0222	0.0004			-9.0203		0.933	14.97	12.8
	Pate	-15.8486	1.0409						0.726	29.15	25.5
	Pate	112.5384	1.0780	0.0003			-7.7031		0.945	13.43	12.3
	Freedson (3 MET)	-10.0605	0.4168	0.0002					0.904	15.94	14.9
	Freedson (3 MET)	-57.4086	0.5821	0.0002			3.3287		0.921	15.06	13.6
	Puyau	-6.5762	0.7572	-0.0009					0.498	39.82	36.3
	Puyau	133.2262	1.3785	-0.0015			-9.9722		0.894	18.81	16.3
Van Cauwenberghe	Freedson (4 MET)	-10.6973	0.0346	-0.0001					0.640	20.88	24.7
	Freedson (4 MET)	-112.7420	0.6121	-0.0009			7.1432		0.916	10.35	11.5
	Evenson	-0.4432	0.9772						0.998	1.28	1.3
	Pate	3.0936	0.8355	0.0001					0.937	8.07	11.1
	Pate	-11.4262	0.9492	-0.0002			1.1471		0.950	7.01	9.9
	Freedson (3 MET)	-17.4535	0.2050	-0.0005					0.467	24.43	30.9
	Freedson (3 MET)	-148.3597	0.6616	-0.0007			9.2024		0.778	15.73	20.3
	Freedson (3 MET)	-142.2791	0.5771	-0.0006			8.9591		0.785	15.49	19.9
	Puyau	0.2787	1.1261	-0.0011					0.946	7.31	10.0
	Puyau	11.4445	1.1768	-0.0011			-0.7958		0.953	6.74	9.2

345

Table 2. (Continued)

Accelerometer cutpoint MVPA min.d <sup>-1</sup>		Prediction Equations <sup>†</sup>			Demographics			Leave One Out Cross Validation*			
Outcome Variable <sup>a</sup>	Predictor Variable	Intercept	MVPA (min.d <sup>-1</sup> )	MVPA (min.d <sup>-1</sup> )	Squared	Square root	Age (years)	Gender <sup>b</sup>	Adjusted R <sup>2</sup>	Average Error <sup>c</sup> (min/day)	Absolute Error <sup>d</sup> %
Evenson	Pate	-7.6013	0.7347						0.941	8.05	10.6
	Pate	-22.9695	0.7633				1.1398		0.953	6.87	9.4
	Freedson (3 MET)	-17.7246	0.2088	-0.0005		4.8722			0.475	24.86	30.3
	Freedson (3 MET)	-151.3777	0.6753	-0.0007		1.9502	9.3962		0.785	15.89	19.7
	Freedson (3 MET)	-145.2212	0.5898	-0.0006		2.7444	9.1499	-5.3351	0.792	15.64	19.2
	Van Cauwenberghe	0.5413	1.0215						0.998	1.31	1.3
	Freedson (4 MET)	-10.6026	0.0329	0.0000		7.7146			0.647	21.18	24.1
	Freedson (4 MET)	-114.2384	0.6204	-0.0009		5.9992	7.2554		0.919	10.39	11.2
	Puyau	-0.0162	1.0679	-0.0007		3.6674			0.942	7.77	10.4
	Puyau	12.2396	1.1234	-0.0008		2.9359	-0.8736		0.950	7.13	9.1
Pate	Freedson (3 MET)	-19.5240	0.2505	-0.0006		7.2571			0.616	28.65	21.2
	Freedson (3 MET)	-181.2504	0.8145	-0.0008		3.7267	11.3690		0.880	16.40	11.3
	Van Cauwenberghe	15.1517	1.3052						0.935	11.27	9.6
	Van Cauwenberghe	36.4870	1.2695				-1.7003		0.952	9.41	8.2
	Freedson (4 MET)	-5.3433	0.0244	0.0002		10.6224			0.754	23.44	17.4
	Freedson (4 MET)	-116.4227	0.6531	-0.0007		8.7913	7.7757		0.934	11.67	9.2
	Evenson	14.3381	1.2802						0.941	10.80	9.2
	Evenson	34.7490	1.2459				-1.6215		0.956	9.02	7.7
	Puyau	3.7073	0.8087	-0.0007		9.9610			0.817	18.79	16.0
	Puyau	41.4428	0.9799	-0.0009		7.7065	-2.6895		0.860	16.05	13.9

346

347

Table 2. (Continued)

Accelerometer cutpoint MVPA min.d <sup>-1</sup>				Prediction Equations <sup>f</sup>				Demographics			Leave One Out Cross Validation*		
Outcome Variable <sup>a</sup>	Predictor Variable	Intercept	MVPA (min.d <sup>-1</sup> )	MVPA (min.d <sup>-1</sup> )	Squared	MVPA (min.d <sup>-1</sup> )	Square root	Age (years)	Gender <sup>b</sup>	Adjusted R <sup>2</sup>	Average Error <sup>c</sup> (min/day)	Absolute Error <sup>d</sup> %	
Freedson (3 MET)	Van Cauwenberghe	-8.7703	1.0464	-0.0025	14.1213					0.430	68.67	33.3	
	Van Cauwenberghe	247.3136	0.6734	0.0005	8.9683			-18.3805		0.908	27.39	13.7	
	Freedson (4 MET)	12.5470	2.0066	-0.0022						0.910	26.89	13.0	
	Freedson (4 MET)	120.4882	1.5802	-0.0017				-7.2474		0.950	19.98	9.9	
	Evenson	22.1710	2.5511	-0.0065						0.436	68.31	33.1	
	Evenson	266.2679	1.6217	-0.0021				-18.3044		0.910	27.26	13.5	
	Pate	10.3366	1.5058							0.566	59.91	28.0	
	Pate	233.2335	1.1204					-16.6202		0.940	22.86	10.3	
	Puyau	1.1251	-0.5376	0.0011	27.3953					0.3234	74.95	37.2	
	Puyau	273.8841	0.6415	-0.0001	11.7666			-19.4780		0.8735	31.42	16.3	
Puyau	Pate	-8.8032	0.4958							0.799	10.66	23.2	
	Pate	-27.3259	0.5302					1.3738		0.833	9.50	21.2	
	Freedson (3 MET)	-2.0648	0.3641	-0.0007						0.343	19.80	41.5	
	Freedson (3 MET)	-109.0616	0.5579	-0.0006				6.9629		0.659	14.00	30.7	
	Freedson (3 MET)	-101.9867	0.5345	-0.0006				6.7734	-4.1982	0.667	13.85	30.1	
	Van Cauwenberghe	-2.4459	0.6144	0.0009						0.943	5.61	11.8	
	Van Cauwenberghe	-9.8824	0.6432	0.0007				0.5610		0.949	5.25	11.1	
	Freedson (4 MET)	3.2866	0.5067	-0.0010						0.510	17.86	34.7	
	Freedson (4 MET)	-82.9904	0.8491	-0.0014				5.7854		0.832	10.55	20.4	
	Evenson	-2.5646	0.5941	0.0009						0.939	5.80	12.4	
	Evenson	-10.5480	0.6249	0.0007				0.5994		0.946	5.40	11.7	

348

Table 2. (Continued)

Key:

<sup>†</sup> Prediction equations developed using entire sample (n = 43112)

<sup>a</sup> For example, predicting Freedson (4MET) MVPA min.d<sup>†</sup> using Van Cauwenberghe cutpoints

<sup>b</sup> 1 = males, 0 = Females

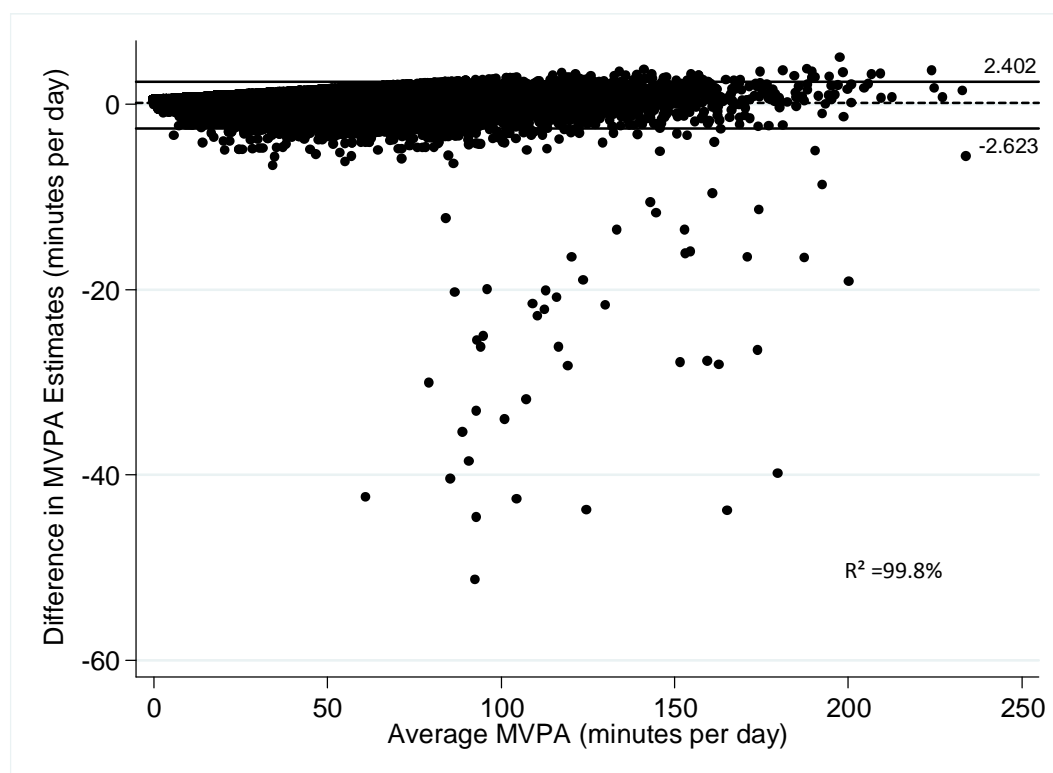
<sup>c</sup> Average Error calculated using formula:  $\sqrt{[\sum(Y - Y')^2 / (N - 1)]}$  where Y is the actual value and Y' is the predicted value

<sup>d</sup> Absolute Percent Error calculated using formula:  $[(Y - Y')/Y] \times 100$

\* One study used as validation, 20 studies as derivation. Repeated until each study served as validation.

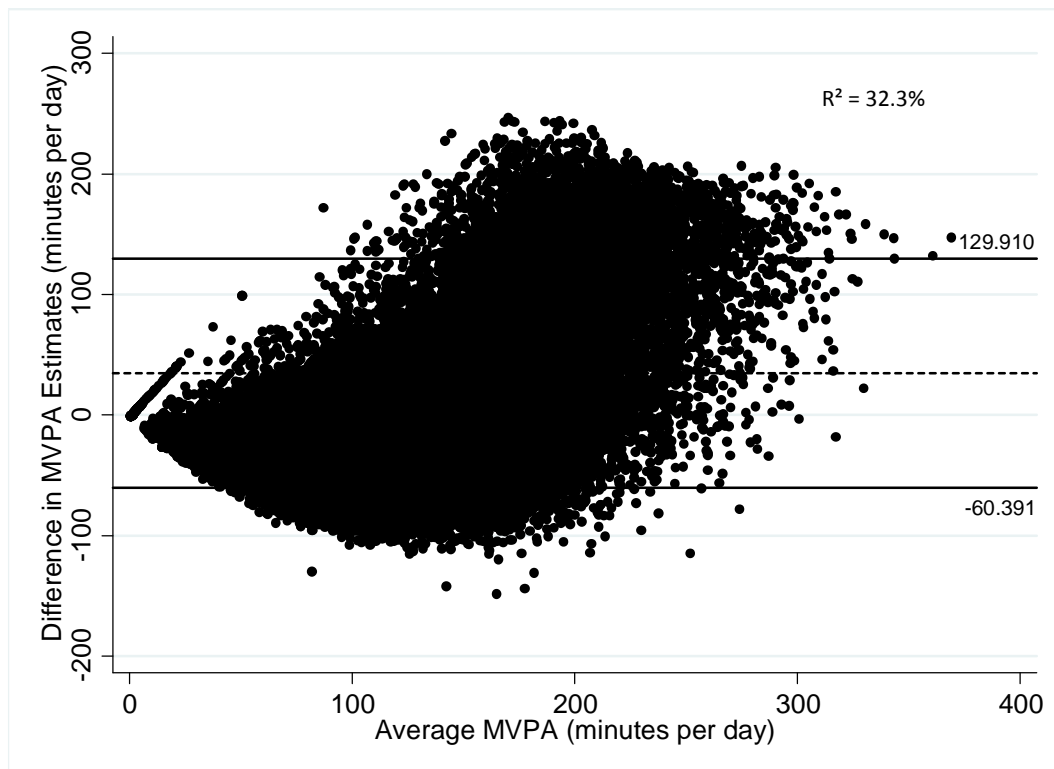
350 Figure 1. Bland Altman plots of best (a) and worst (b) agreement between actual MVPA and predicted  
351 MVPA values.

352



353

354 (a) Van Cauwenberghe MVPA predicted from Evenson MVPA. Dashed line signifies mean  
355 difference (-0.110 min.d<sup>-1</sup>).  
356



357

358 (b) Freedson (3MET) MVPA predicted from Puyau MVPA (Age not in model). Dashed line signifies  
359 mean difference ( $34.76 \text{ min.d}^{-1}$ )

360

361

Figure(s)

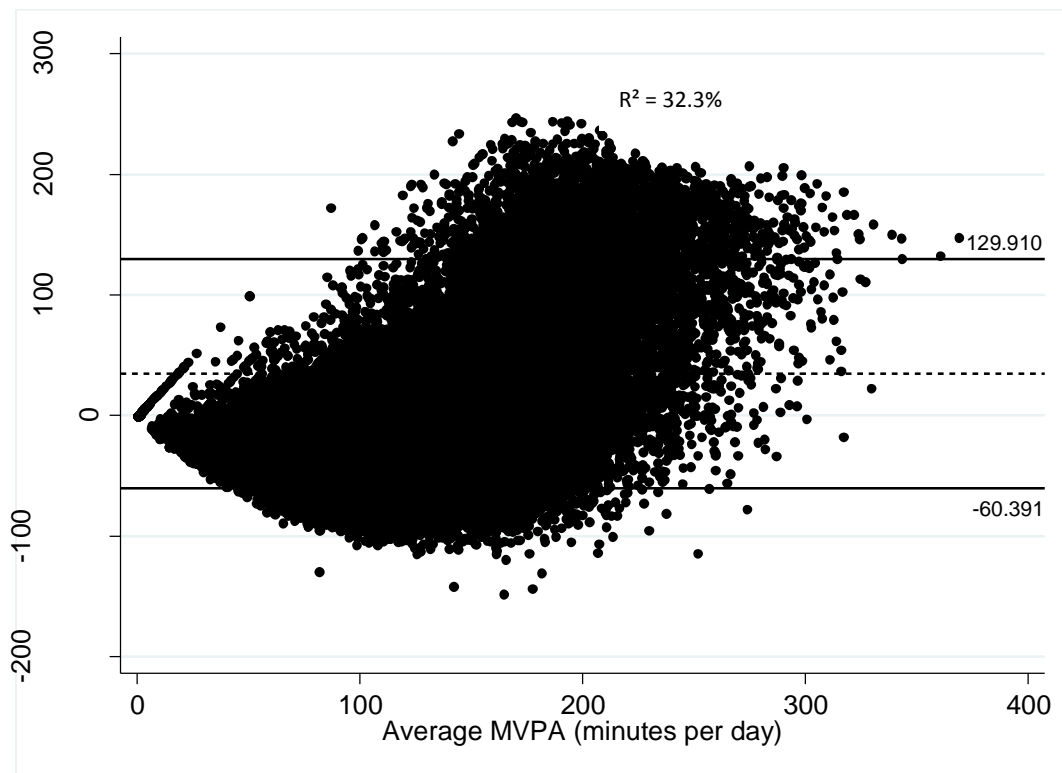
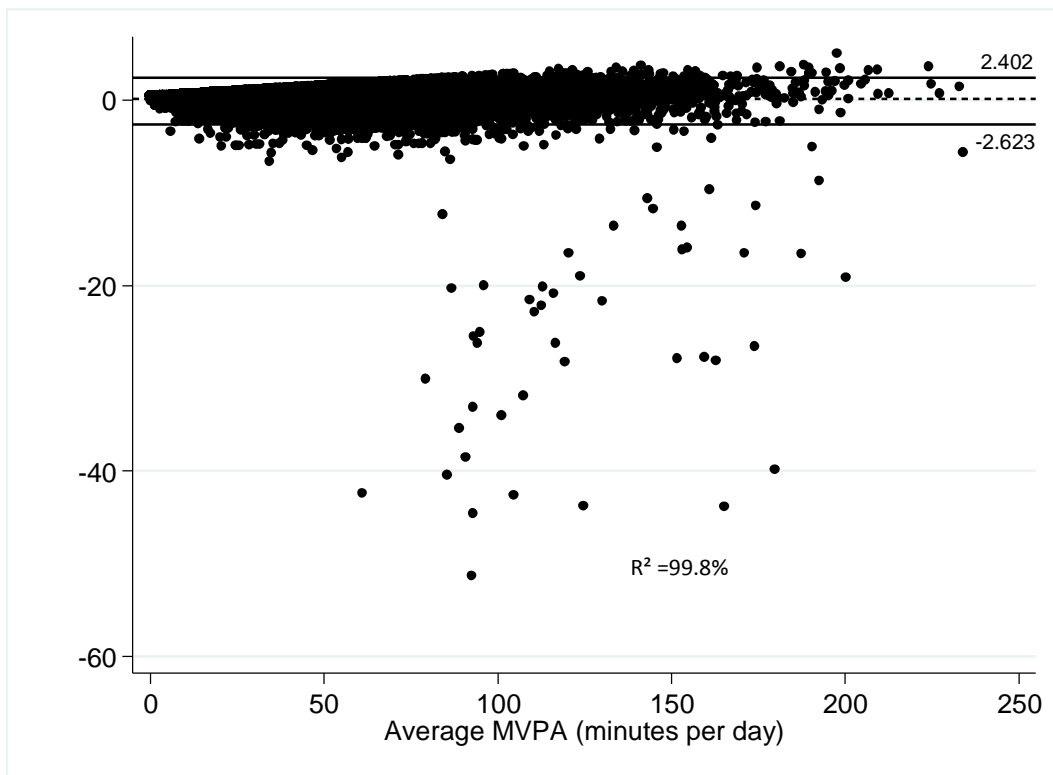


Table 3. Accuracy of the prediction equations using studies that report moderate-to-vigorous physical activity (MVPA) estimates (min.d<sup>-1</sup>) using two different sets of cutpoints

Study <sup>a</sup>	Pre-Conversion Comparison of MVPA (min.d <sup>-1</sup> )			MVPA Conversion <sup>b</sup>	Post-Conversion Comparison of MVPA (min.d <sup>-1</sup> )		
	Cutpoint 1	Cutpoint 2	Abs. Difference		Cutpoint 1	Cutpoint 2	Abs. Difference
Guinhouya et al. (2006)	FR3: 141	PY: 28	113	FR3 predicted from PY	21	28	7
				PY predicted from FR3	141	183	42
Loprinzi et al. (2012)	FR4: 59	PY: 23	36	FR4 predicted from PY	59	61	2
				PY predicted from FR4	26	23	3
Van Cauwenberghe et al. (2011)	VC: 55	EV: 58	3	VC predicted from EV	55	56	1
				EV predicted from VC	57	58	1
	VC: 55	PT: 91	36	VC predicted from PT	97	91	6
				PT predicted from VC	55	50	5

Key: FR3, Freedson (3MET); PY, Puyau; FR4, Freedson (4MET); VC, Van Cauwenberghe; EV, Evenson; PT, Pate

<sup>a</sup> Demographic information reported in studies to convert MVPA estimates: Guinhouya et al, mean age = 9 yrs; Loprinzi et al, mean age = 11 yrs;

Van Cauwenberghe et al: mean age = 5.5yrs

<sup>b</sup> Using specific prediction equation from Table 2